

An aerial photograph of the Detroit River, showing the cityscapes of Detroit, Michigan on the left and Windsor, Ontario on the right. The river flows from the background towards the foreground. The sky is overcast with grey clouds. A thin green horizontal line is visible just below the title.

The Detroit River International Crossing Study

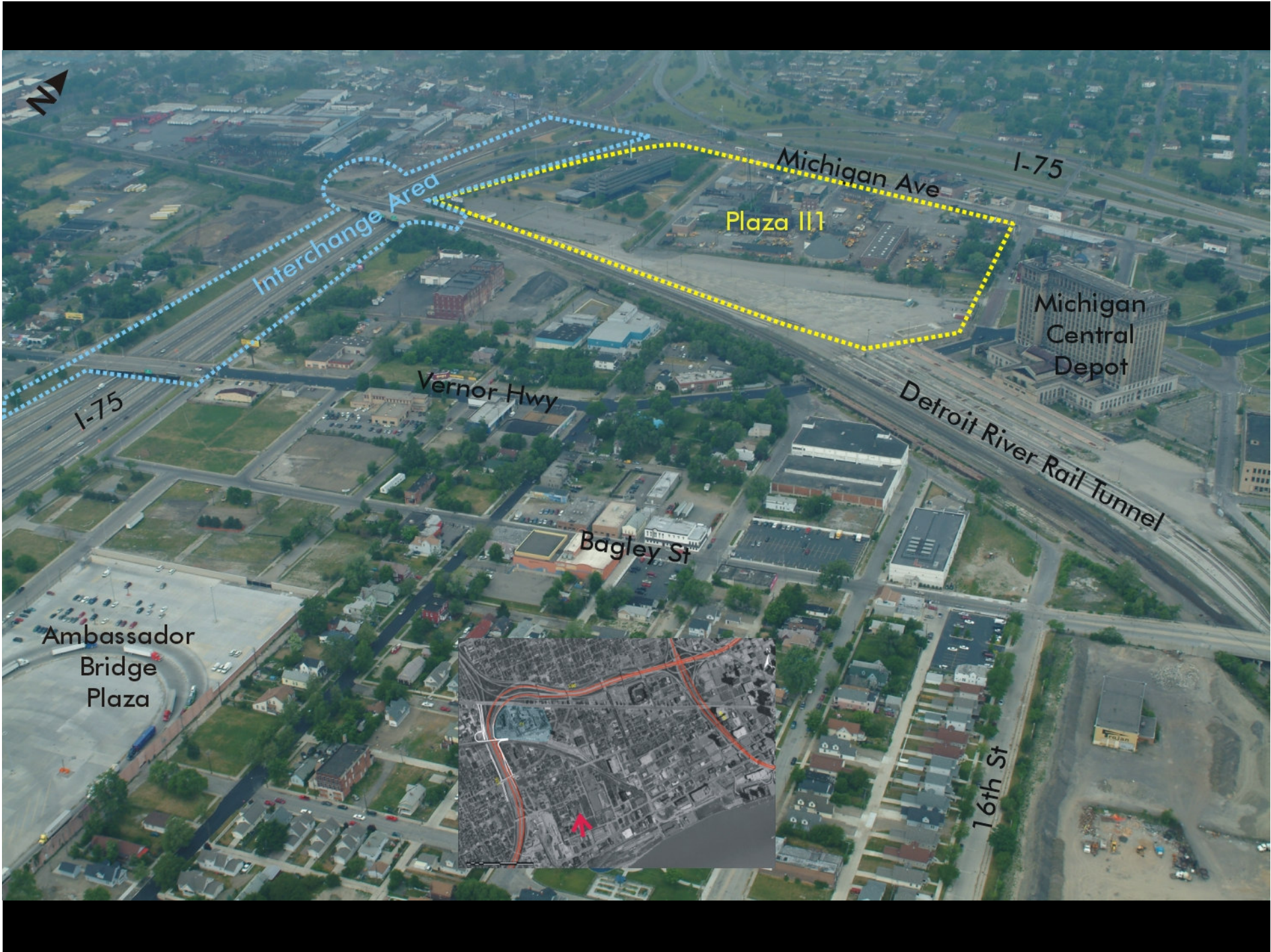
Description of Preliminary Illustrative Alternatives Downtown I-75 / M-10 Area

June 2005



II1: Michigan Ave / I-75





Interchange Area

Plaza III

Michigan Ave

I-75

Michigan Central Depot

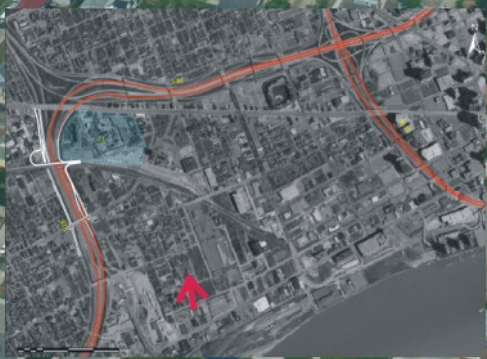
Vernor Hwy

Detroit River Rail Tunnel

Bagley St

Ambassador Bridge Plaza

16th St



1) 17th Street



2) Truck Storage



3) Vacant building



4) Vacant building



5) Macomb Playlot



MICHIGAN AVE/I-75 II-1 - POTENTIAL PLAZA SITE

DETROIT RIVER INTERNATIONAL CROSSING

Location: Southeast corner of I-75 and Michigan Avenue, City of Detroit

Plaza Size: Approximately 38 acres

This site consists of several vacant industrial buildings. It is also the site of United Community Hospital and the Macomb Playlot. It is bordered by rail lines on the east, I-75 to the south, and Michigan Avenue on the west. Roosevelt Park is close to its northern boundary line. This site also contains the rail tunnel to Canada.



 Potential Proposed Plaza Site

LEGEND

B Banks	P Parks
FA Federal	SEN Senior Services
L Laundromat	AA Aridance Area
M Museum	CTYH City Hall
PW Places of Worship	HMLS Homeless Shelter
SHOP Shopping	MED Medical Facility
TPP Third Party Places	PS Police Station
CEM Cemetery	SC School
FS Fire Stations	OA Opportunity Area
LB Library	

MDOT
Michigan Department of Transportation
THE CORRADINO GROUP

6) Residential area



7) Commercial building



8) Vacant building



9) United Community Hospital



10) Corbett & Be of Corporation



**II2: Rosa Parks Blvd /
Bagley St**





Canada

Detroit River

Fort St

Lafayette Blvd

Plaza II2

16th St

Bagley St

To I-75

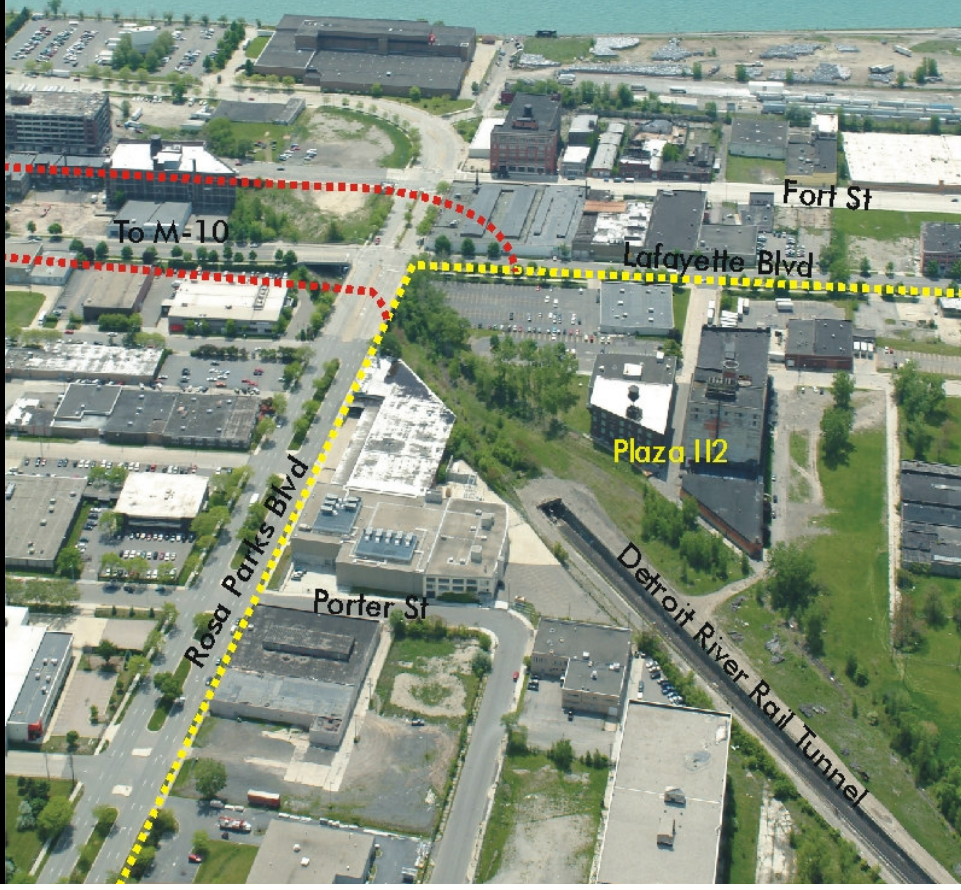




Canada



Detroit River



To M-10

Fort St

Lafayette Blvd

Plaza 112

Rosa Parks Blvd

Porter St

Detroit River Rail Tunnel

① American Steel Company



② Vacant building



③ Vacant building



④ Vacant building



⑤ Building for lease



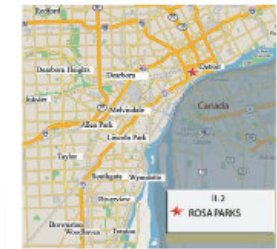
ROSA PARKS BLVD/ BAGLEY STREET II-2 - POTENTIAL PLAZA SITE

DETROIT RIVER INTERNATIONAL CROSSING

Location: South of Rosa Parks Blvd, East of Bagley Street, West of Lafayette Blvd, North of 16th Street, City of Detroit

Plaza Size: Approximately 73 acres

This site consists of several vacant industrial structures and some active industrial buildings. To the west of the site is the St. Anne's Neighborhood with several renovated houses. The site of the American Steel Company is included in this area. West of Lafayette Street is a building housing Community Mental Health Services.



Potential Proposed Plaza Site

LEGEND

B	Banks	P	Parks
FA	Federal	SEN	Senior Services
L	Laundromat	AA	Arduous Area
M	Museum	CTYH	City Hall
PW	Places of Worship	HMLS	Homeless Shelter
SHOP	Shopping	MED	Medical Facility
TPP	Third Party Places	PS	Police Station
CEM	Cemetery	SC	School
FS	Fire Stations	OA	Opportunity Area
LB	Library		

MDOT
Michigan Department of Transportation
THE CORRADINO GROUP

⑦ Vacant building



⑧ American Steel Company



⑨ Open field



⑩ Vacant train station



**II3: Rosa Parks Blvd /
Porter St**







Canada



Detroit River

Fort St

U.S. Post Office

Plaza 113

Savage Memorial Park

Abbot St

Porter St

Cesar Chavez Middle School

Trumbull St

① Lafayette Boulevard



② Michigan Department of Transportation



③ American Ambulance on Trumbull



④ Government and commercial buildings



⑤ Church



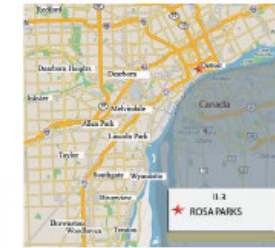
ROSA PARKS BLVD/ PORTER STREET II-3 - POTENTIAL PLAZA SITE

DETROIT RIVER INTERNATIONAL CROSSING

Location: East of Rosa Parks Blvd, North of Fort Street, south of Porter Street, West of Us-10; City of Detroit

Plaza Size: Approximately 63 acres

This site consists of several occupied government office and commercial buildings along with some vacant offices and commercial buildings. Among the occupied office buildings are MDOT and American Ambulance. South of Fort Street is a United States Postal Facility and parking lots serving existing businesses. North of the site are additional occupied office and commercial buildings.



① Potential Proposed Plaza Site

LEGEND

B	Banks	P	Parks
FA	Federal	SEN	Senior Services
L	Laundromat	AA	Avoidance Area
M	Museum	CTYH	City Hall
PW	Places of Worship	HMLS	Homeless Shelter
SHOP	Shopping	MED	Medical Facility
TPP	Third Party Places	PS	Police Station
CEM	Cemetery	SC	School
FS	Fire Stations	OA	Opportunity Area
LB	Library		

MDOT
Michigan Department of Transportation
THE CORRADINO GROUP

⑥ MGM Grand Casino



⑦ 4th Street at the Lodge Freeway



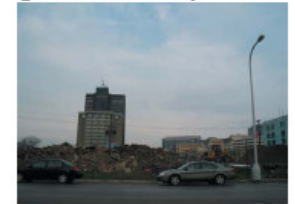
⑧ Vacant building



⑨ Vacant building



⑩ Commercial / Industrial building



Existing Plaza



Michigan Ave

I-75

Vernor Hwy

Bagley St

Detroit River Rail Tunnel

St. Anne's
Cathedral

Existing
Plaza

I-75 South
I-75 North

Fort St.

Ambassador Bridge