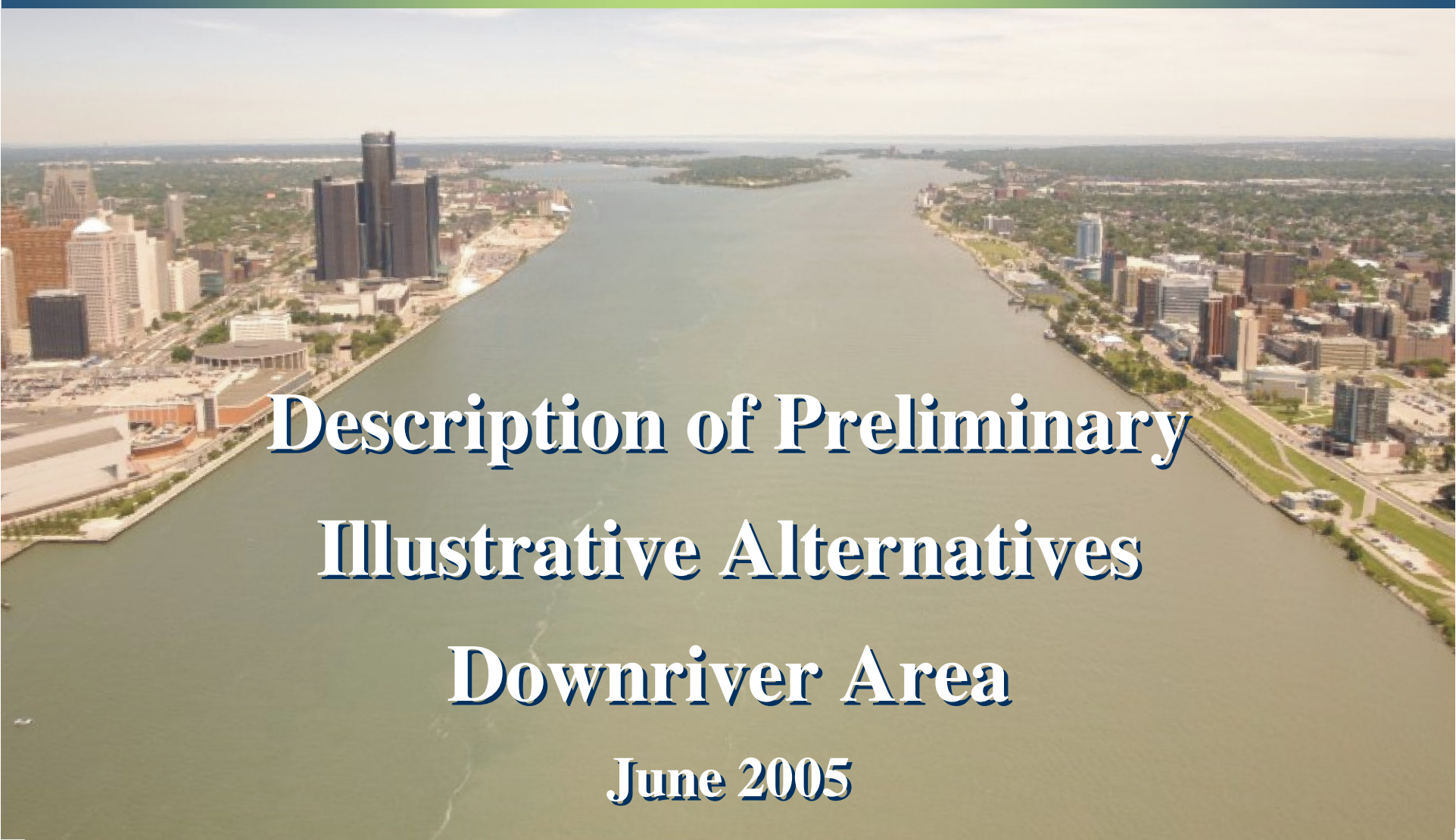


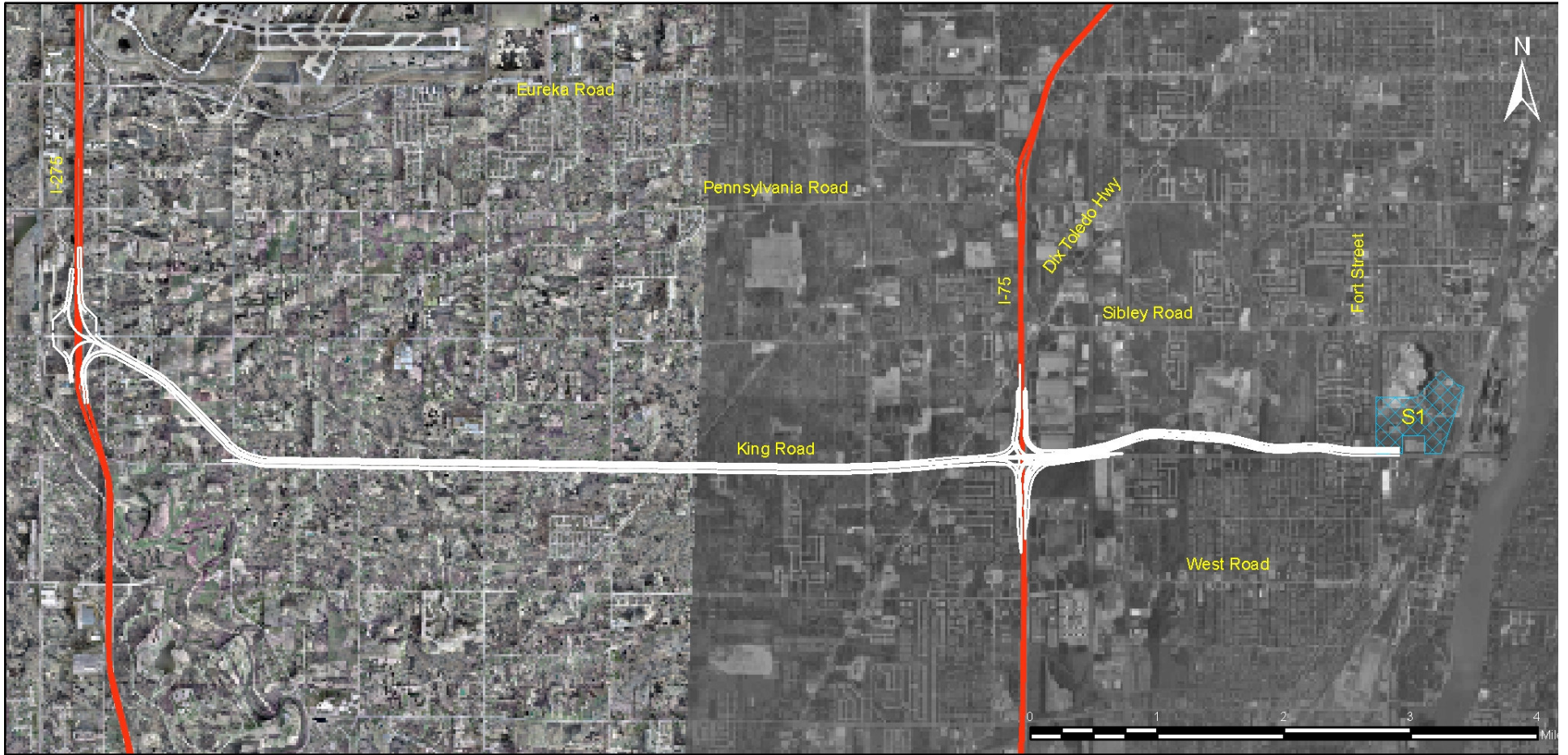
The Detroit River International Crossing Study

An aerial photograph of the Detroit River, showing the cityscapes of Detroit, Michigan on the left and Windsor, Ontario on the right. The river flows from the background towards the foreground. The text is overlaid on the lower half of the image.

Description of Preliminary Illustrative Alternatives Downriver Area

June 2005

S1 King: I-275 to Plaza





Canada

Pennsylvania Rd

Sibley Rd

King Rd

I-275

Interchange Area

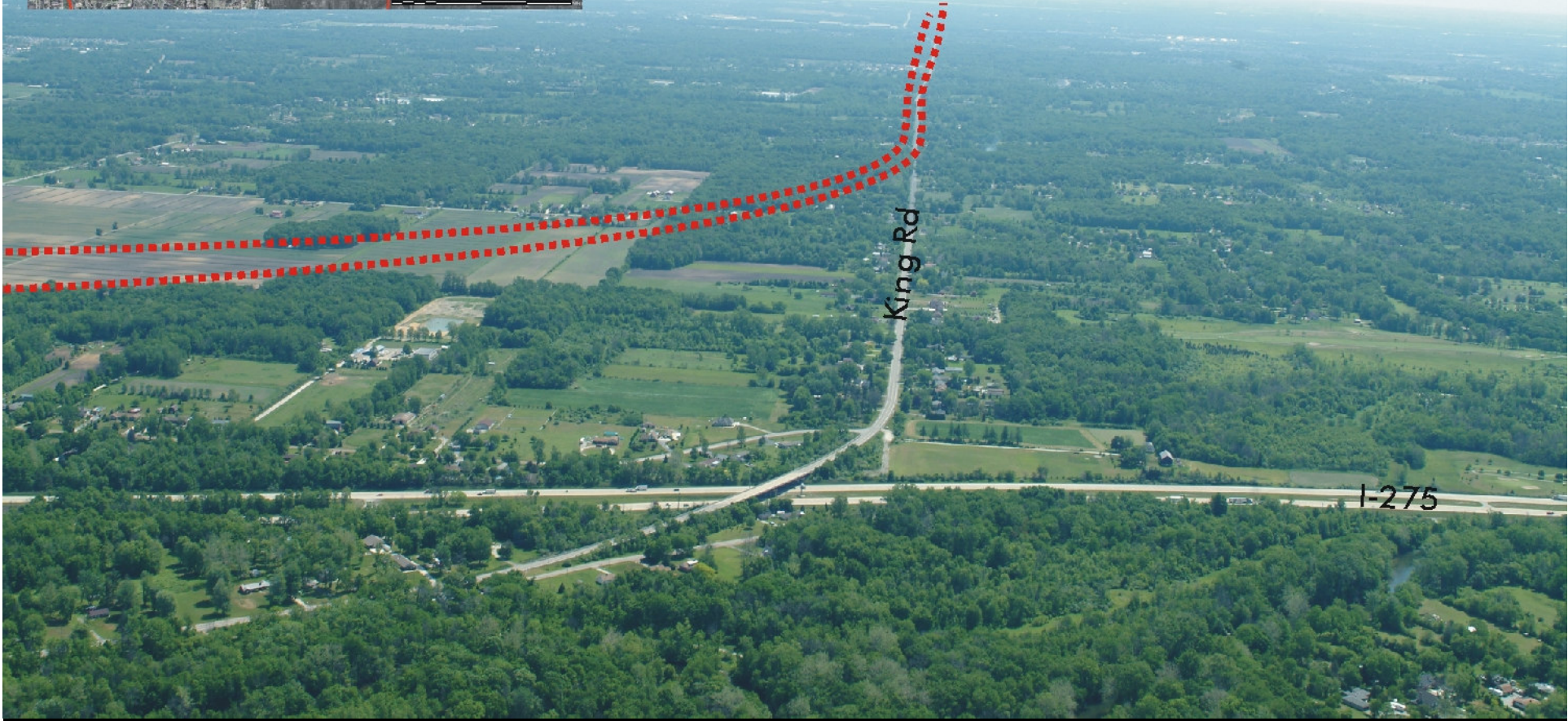


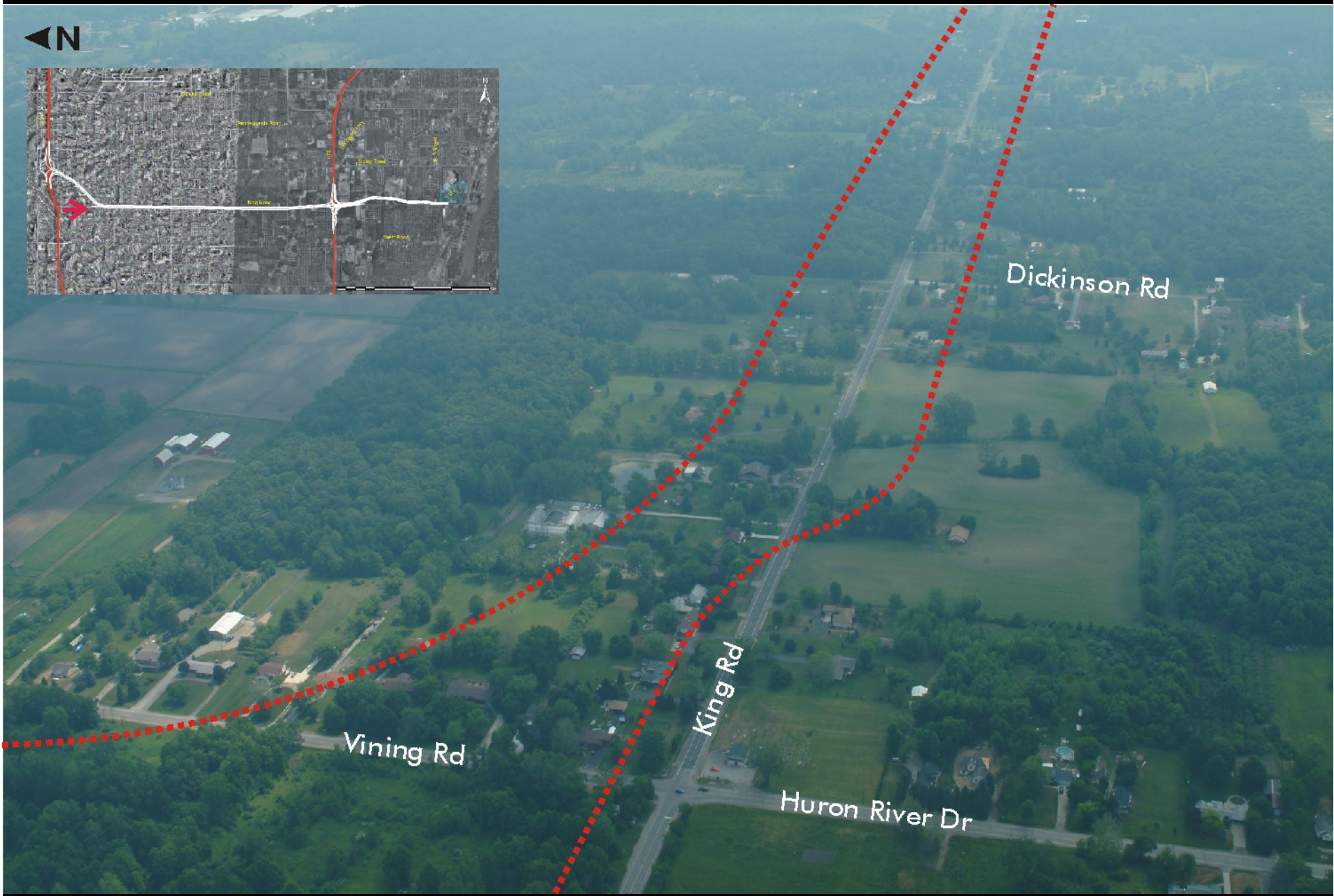


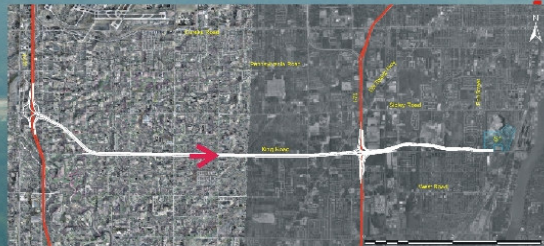
Canada

King Rd

I-275







Inkster Rd

King Rd



Canada

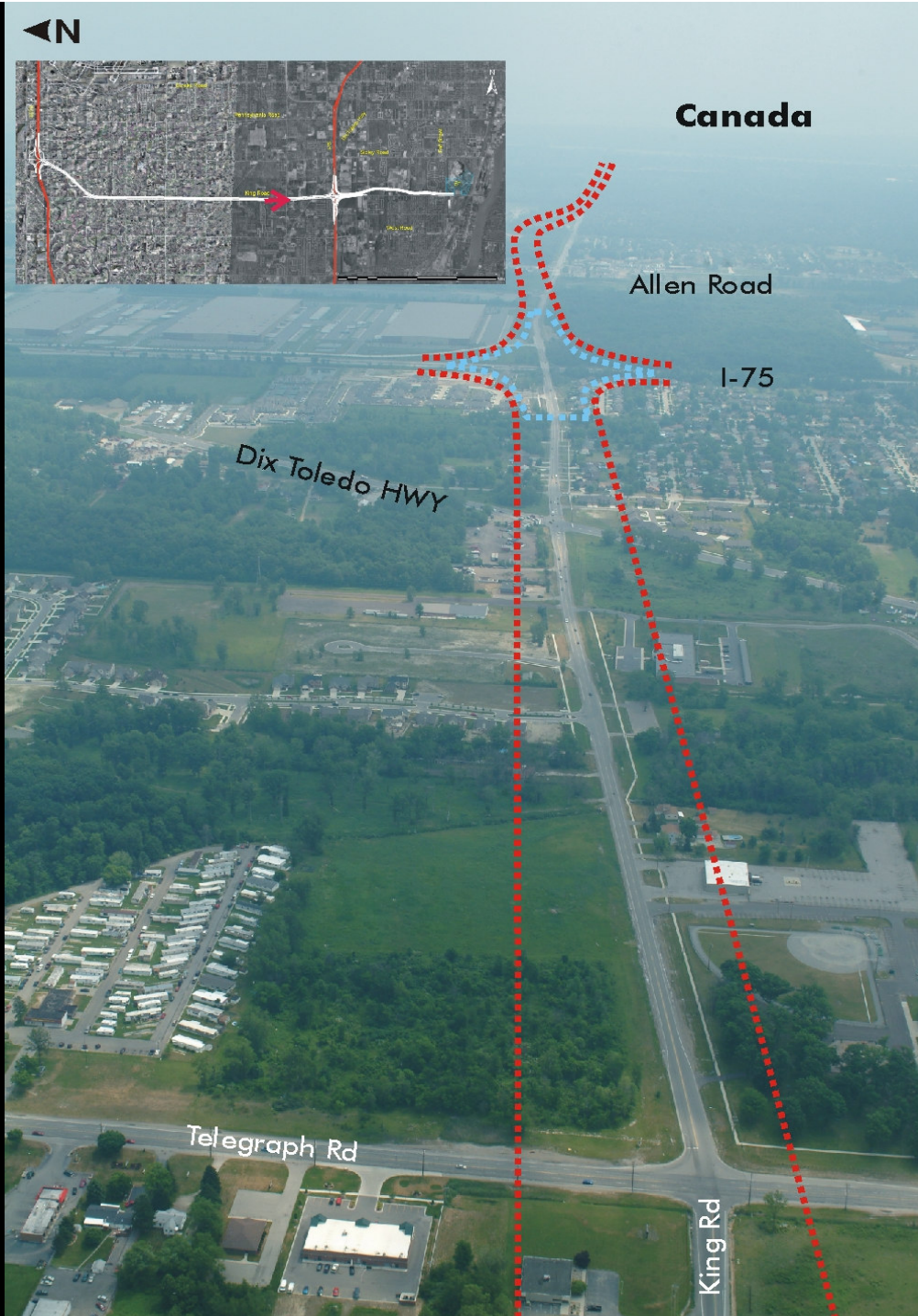
Allen Road

I-75

Dix Toledo HWY

Telegraph Rd

King Rd





Canada

Detroit River

Grosse Ile

Plaza S1

City of Riverview
Land Preserve
(Landfill)

Allen Road

Railroad

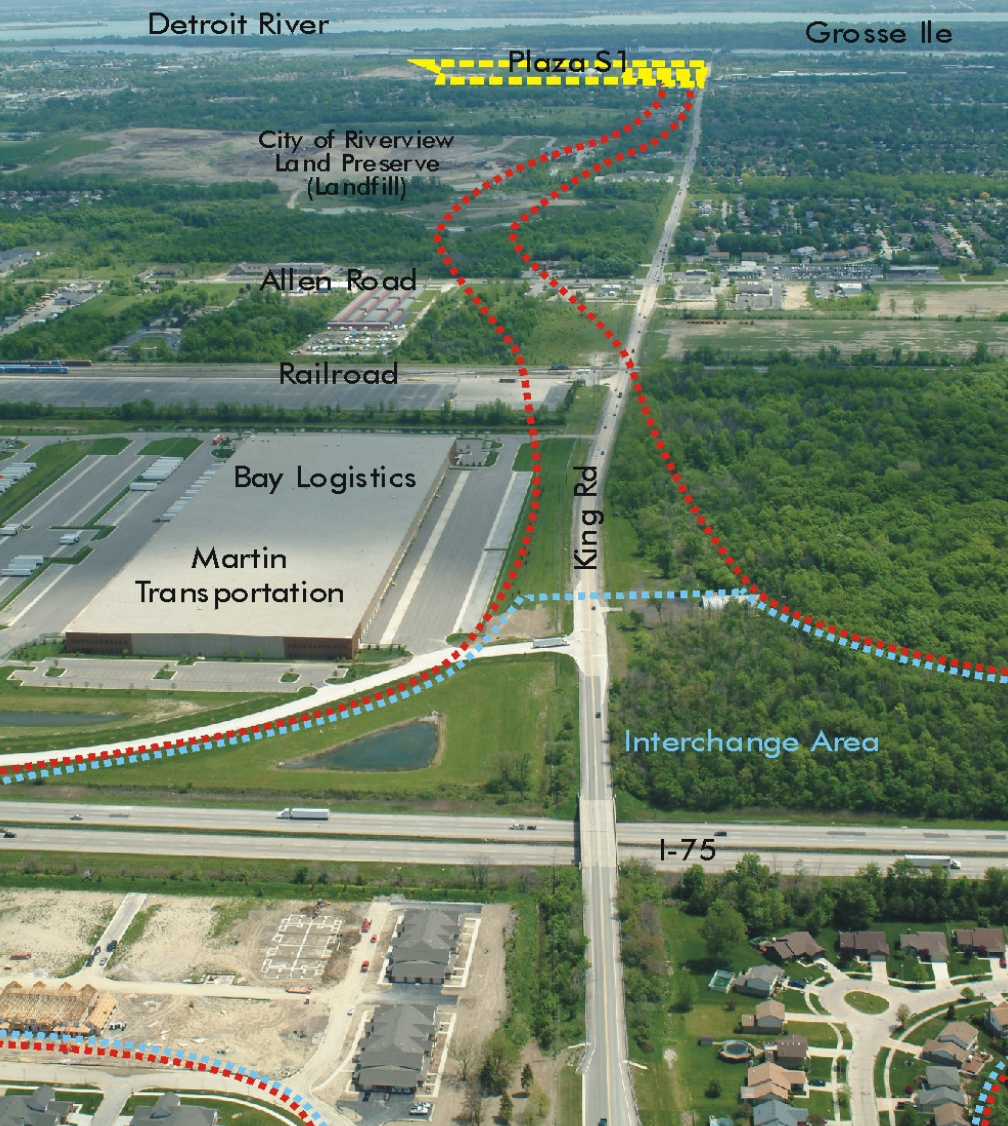
Bay Logistics

Martin
Transportation

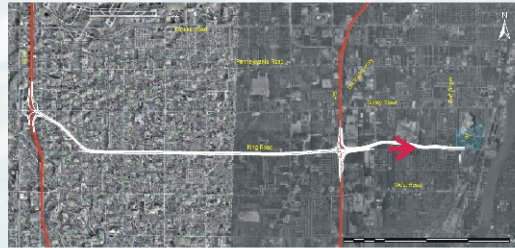
King Rd

Interchange Area

I-75







Canada

Grosse Ile

Detroit River

Plaza St

Fort St (M-85)

King Rd





Detroit River

Railroad

Quarry

Plaza S1

Fort St (M-85)

King Rd





QUARRY ON NORTH SIDE OF KING ROAD S1- POTENTIAL PLAZA SITE

DETROIT RIVER INTERNATIONAL CROSSING

Location: Northwest corner of Fort Street and King Road, City of Trenton
Plaza Size: Approximately 173 acres

This site consists primarily of access roads and staging areas which service the active limestone quarry located immediately to the north. (The active quarry is not included in the analysis.) An active electric power facility is located on the south side of the subject site. A large, vacant industrial building is located on the west side of the site, east of Fort Street. There are four active oil lines and an above grade electric transmission line on the west side of the site. A single family residential area with a school, a park, and three places of worship are located to the northeast of the site. This neighborhood is buffered from the subject site by a wooded, natural area.

On the south side of King Road, across from the subject site is a large office building and an open field. The west side of Fort Street consists of a single family residential development and commercial development, the latter being a function of major intersections.



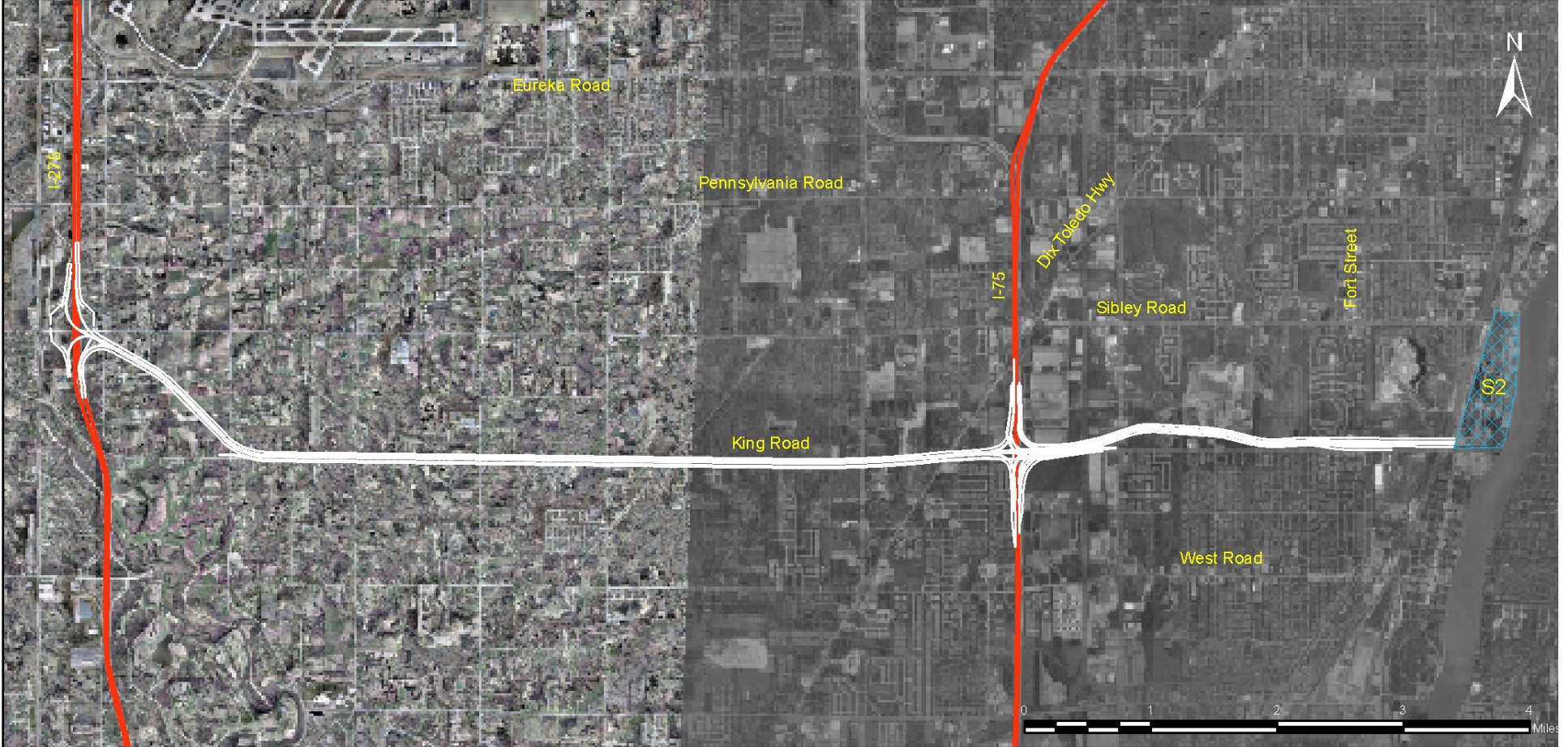
Potential Proposed Plaza Site

LEGEND

B	Barb	P	Parks
FA	Federal	SEN	Senior Services
L	Laundromat	AA	Avoidance Area
M	Museum	CTH	City Hall
PW	Places of Worship	HMLS	Homesless Shelter
SHOP	Shopping	MED	Medical Facility
TPP	Third Party Places	PS	Police Station
CEM	Cemetery	SC	School
FS	Fire Station	OA	Opportunity Area
LB	Library		

MDOT
Michigan Department of Transportation
THE CORRADINO GROUP

S2 King: I-275 to Plaza





Canada

Pennsylvania Rd

Sibley Rd

King Rd

I-275

Interchange Area

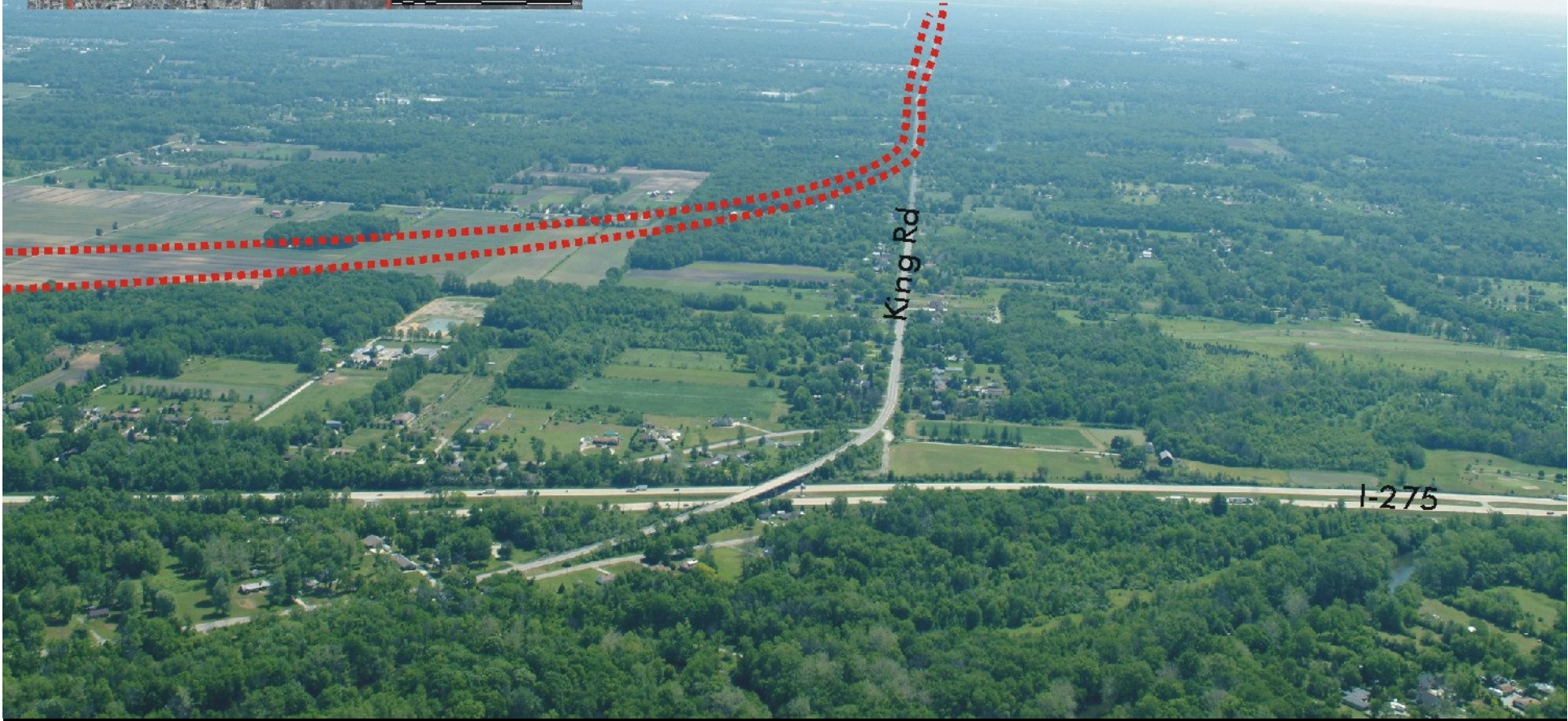


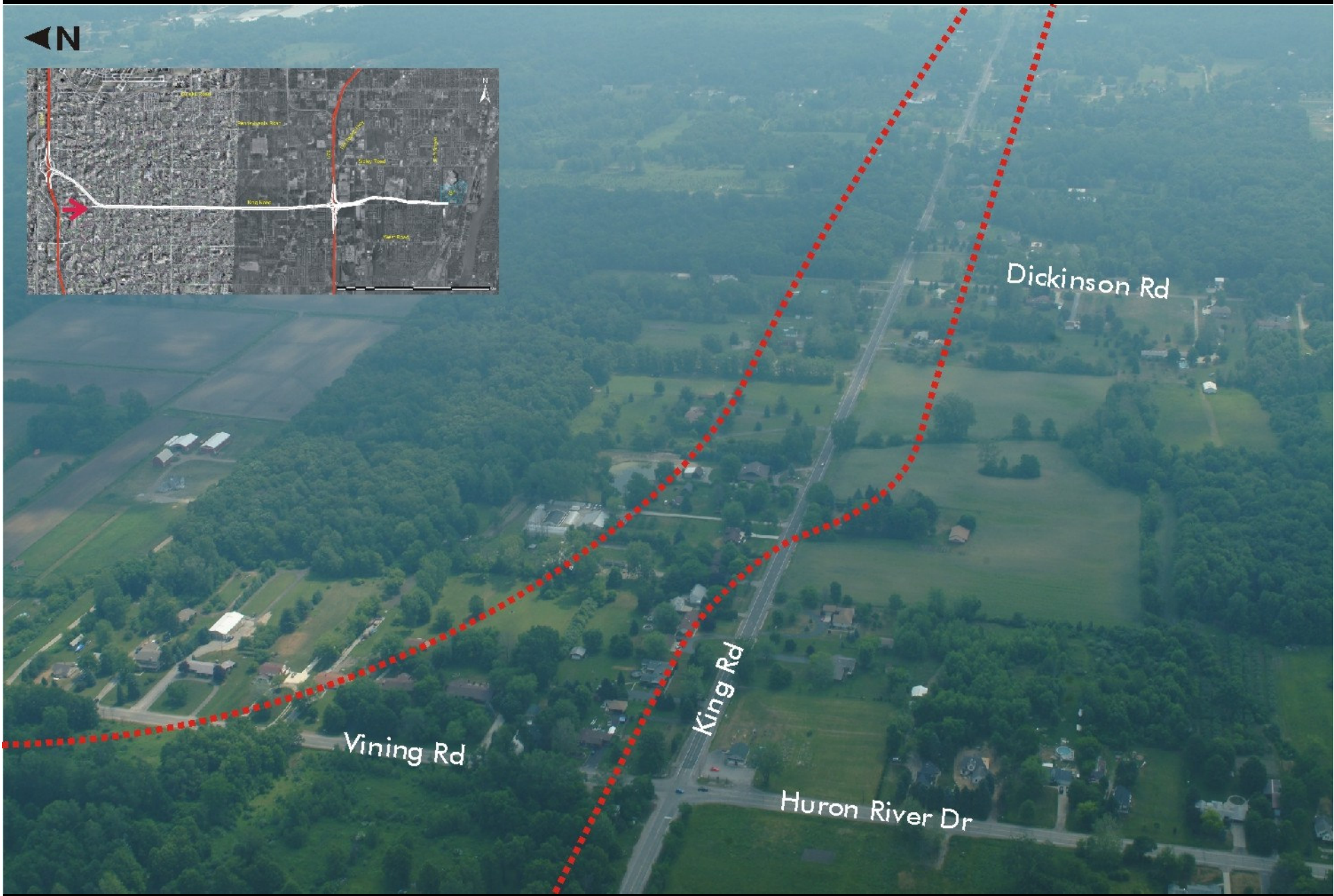


Canada

King Rd

I-275









Canada

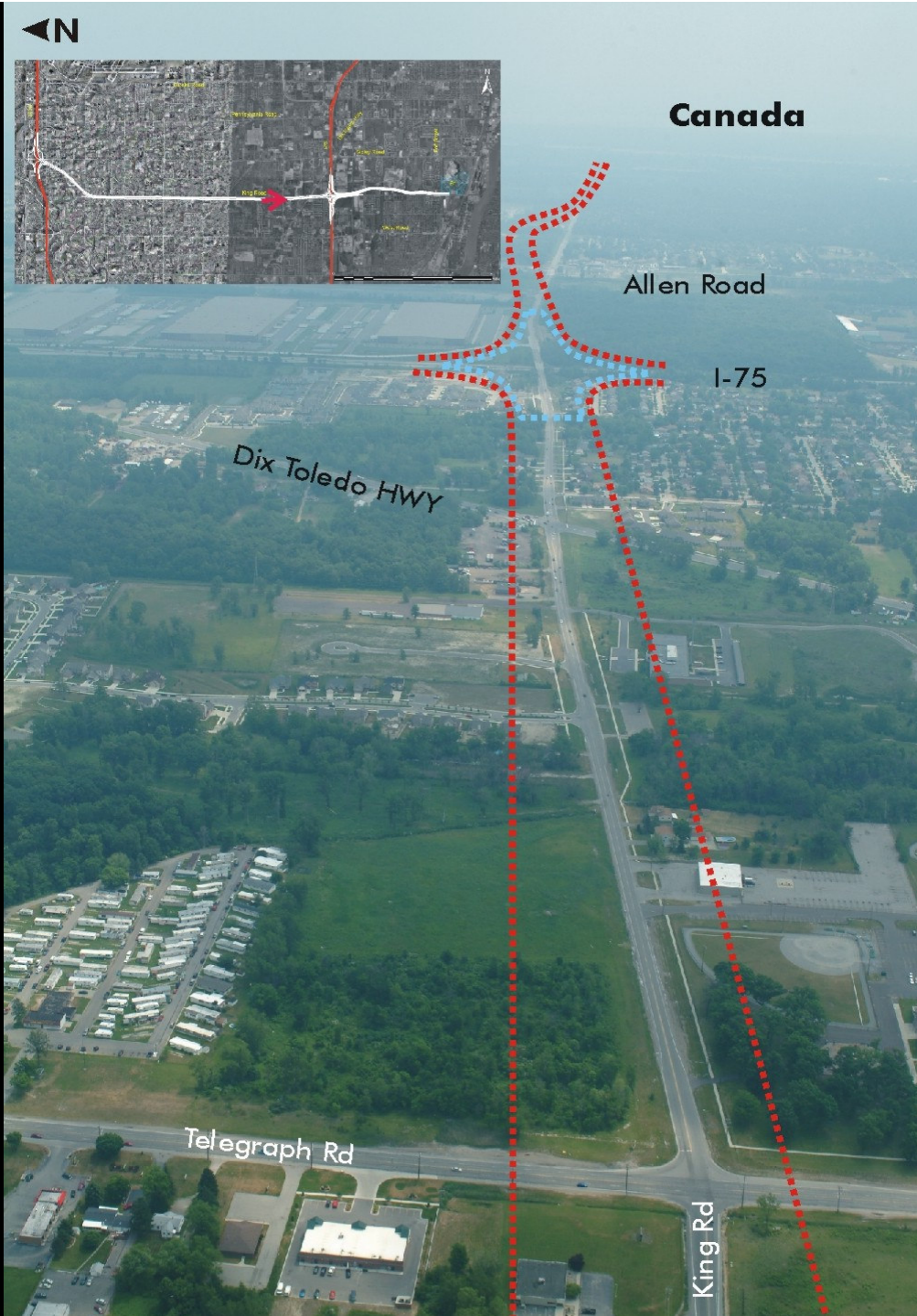
Allen Road

I-75

Dix Toledo HWY

Telegraph Rd

King Rd





Canada

Detroit River

Plaza S2

Grosse Ile

City of Riverview
Land Preserve
(Landfill)

Allen Rd

Railroad

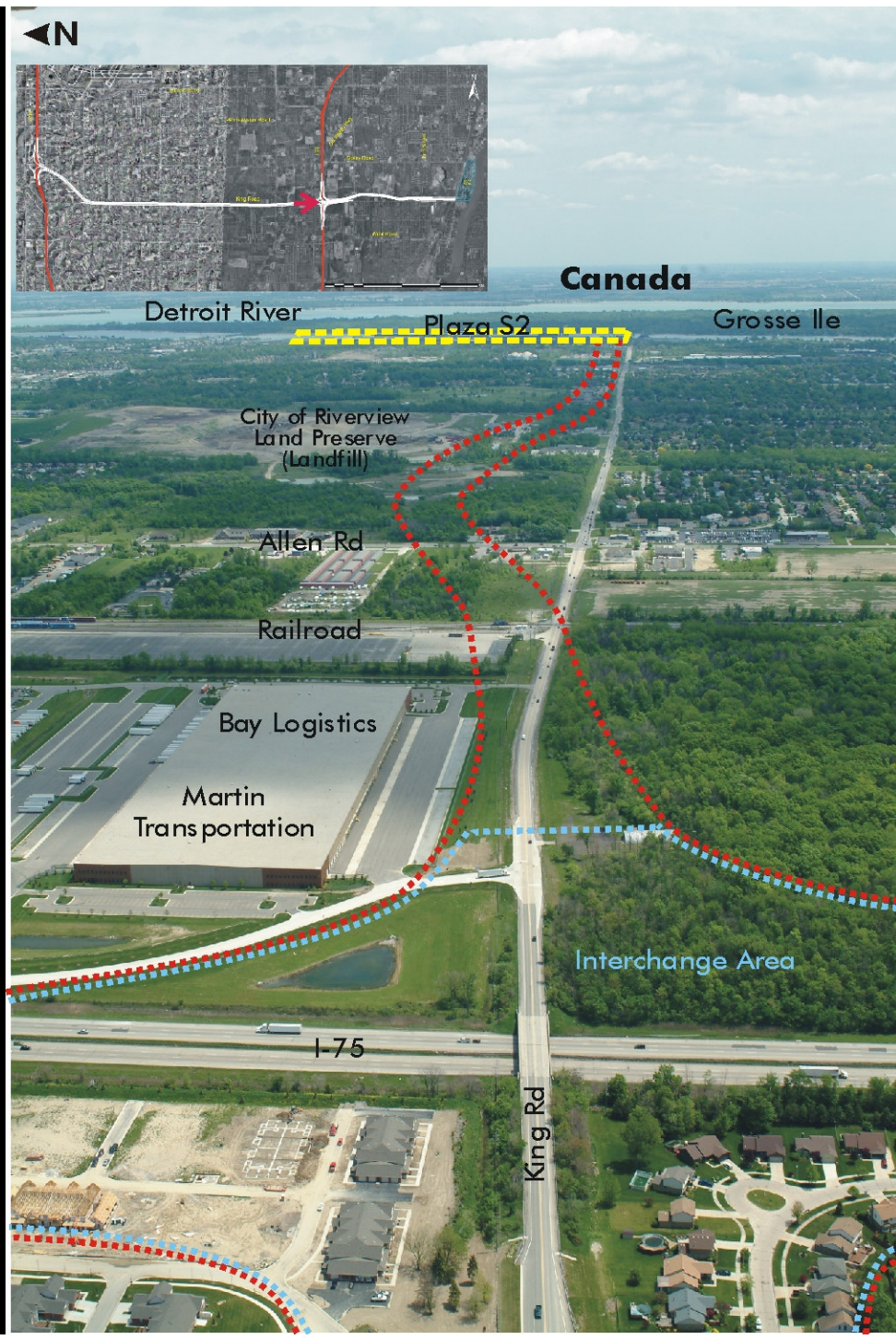
Bay Logistics

Martin
Transportation

Interchange Area

I-75

King Rd







Canada

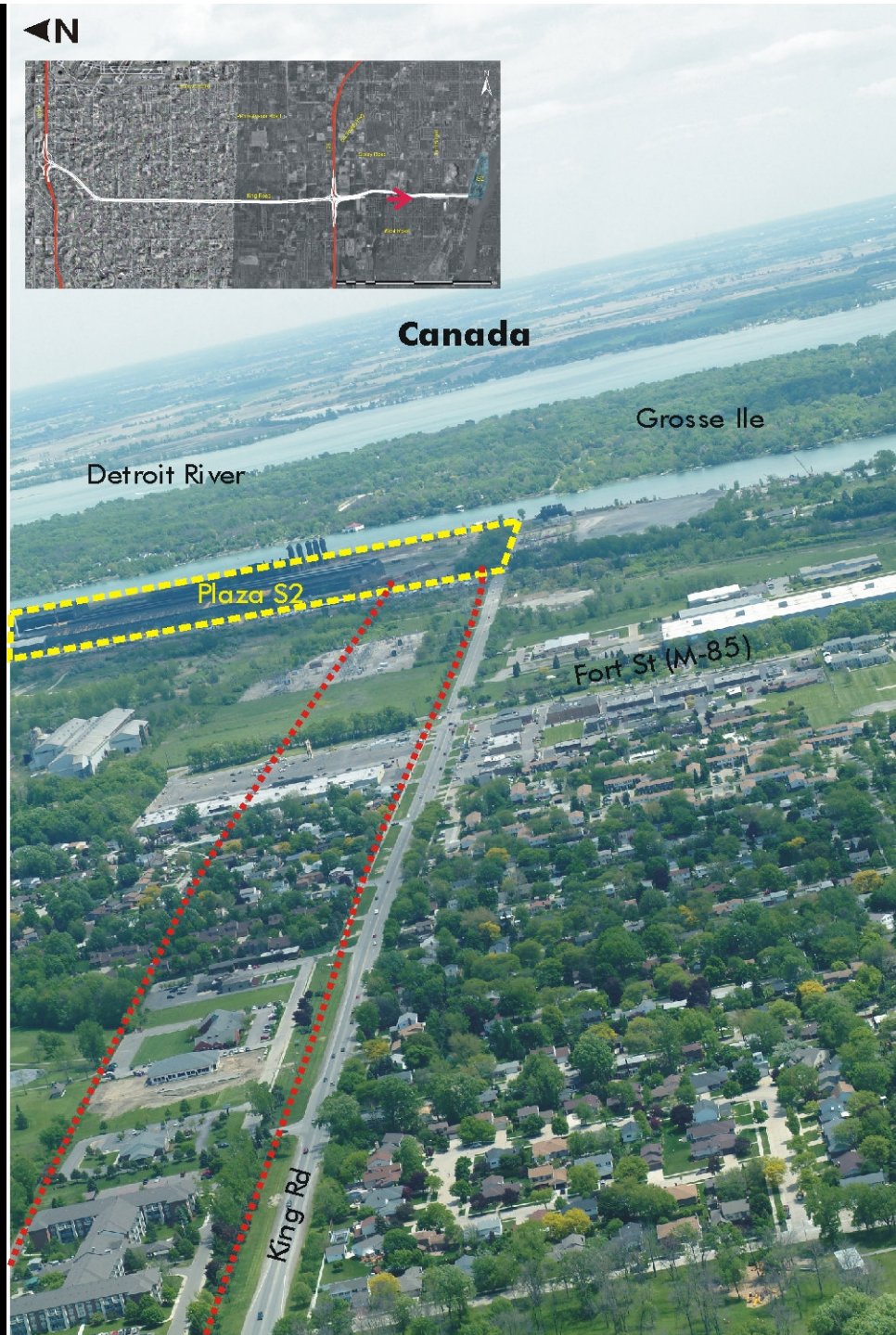
Grosse Ile

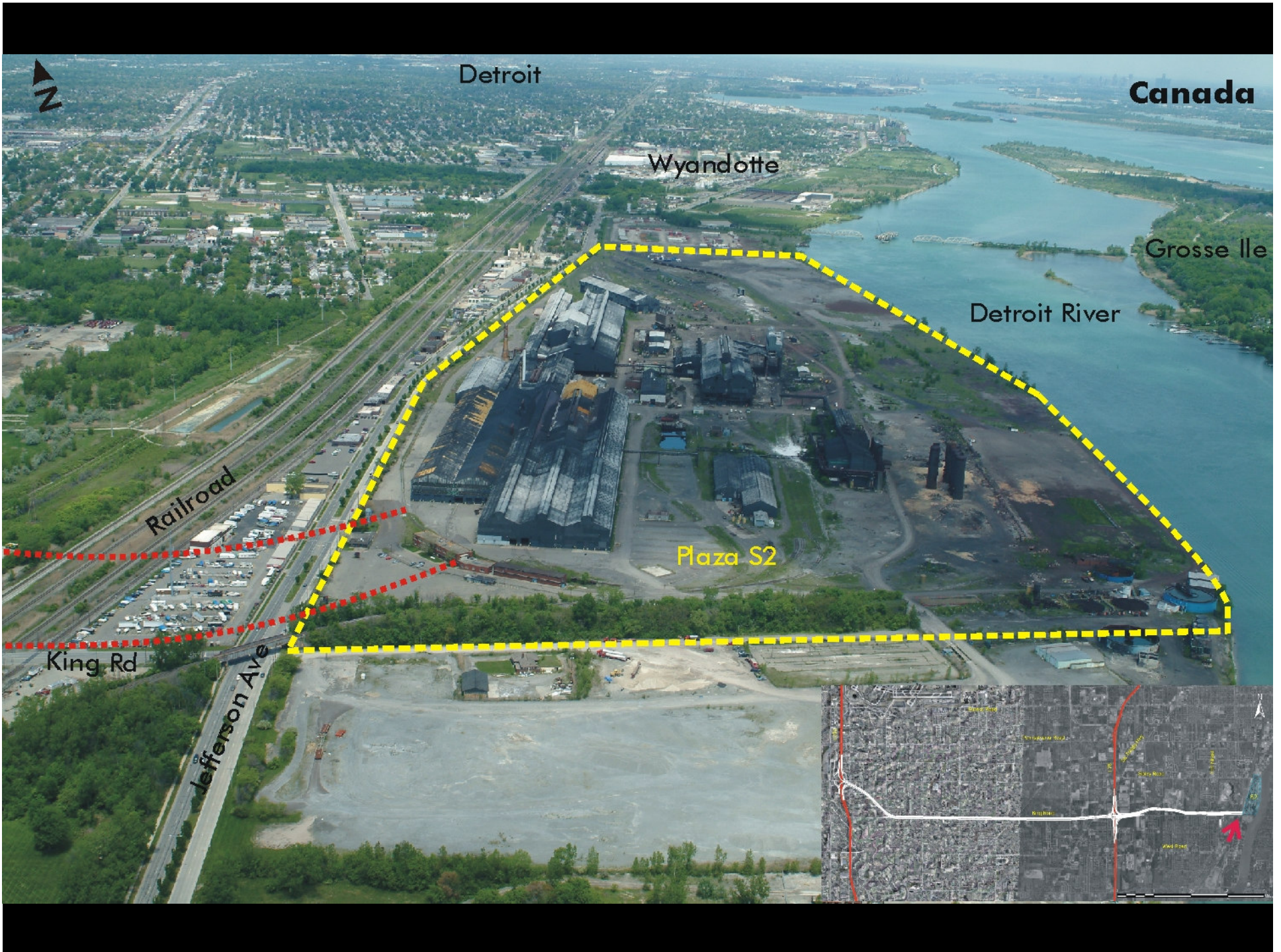
Detroit River

Plaza S2

Fort St (M-85)

King Rd





Detroit

Canada

Wyandotte

Grosse Ile

Detroit River

Plaza S2

Railroad

King Rd

Jefferson Ave



1 Gravel yard



2 Vacant industrial building



3 McLouth Steel



4 Used Auto Parts



5 Railroad tracks and high transmission line



6 Trenton Plant



7 Open Field



8 Trenton Plant



9 Industrial area



MCLOUTH STEEL S2- POTENTIAL PLAZA SITE

DETROIT RIVER INTERNATIONAL CROSSING

Location: East side of Jefferson Avenue, North of King Street, West of the Detroit River, City of Trenton

Plaza Size: Approximately 217 acres

This site consists of several vacant industrial buildings formerly associated with steel production. The buildings on the site are in various stages of disrepair. The site abuts the Detroit River on its east property line. Immediately to the north of the site are docking facilities and a rail line. There is visible industry on west side of Jefferson, across from the subject site.

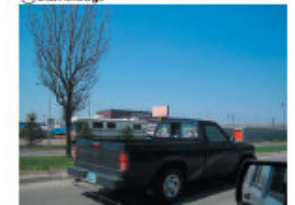


LEGEND

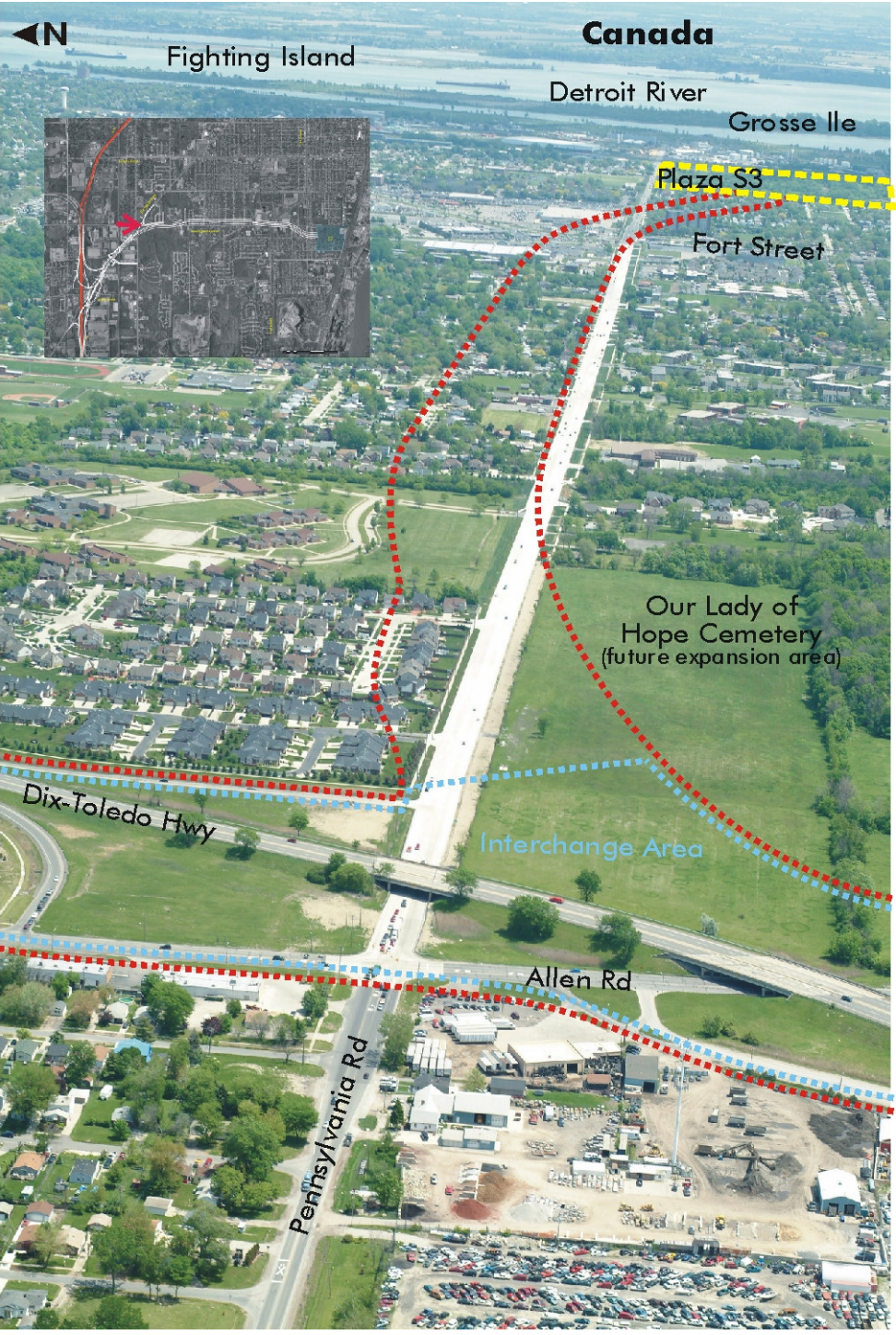
B	Barbs	P	Parks
FA	Federal	SEN	Senior Services
L	Laundromat	AA	Avoidance Area
M	Museum	CTH	City Hall
PW	Places of Worship	HMSL	Homeless Shelter
SHOP	Shopping	MED	Medical Facility
THP	Third Party Places	PS	Police Station
CEM	Cemetery	SC	School
FS	Fire Stations	OA	Opportunity Area
LS	Library		

MDOT
Michigan Department of Transportation
THE CORRADINO GROUP

10 Boat Storage



S3 Pennsylvania: I-75 to Plaza



Fighting Island

Canada

Detroit River

Grosse Ile

Plaza S3

Fort Street

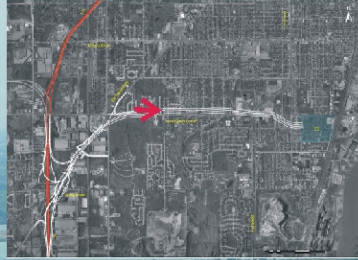
Our Lady of Hope Cemetery
(future expansion area)

Dix-Toledo Hwy

Interchange Area

Allen Rd

Pennsylvania Rd



Canada

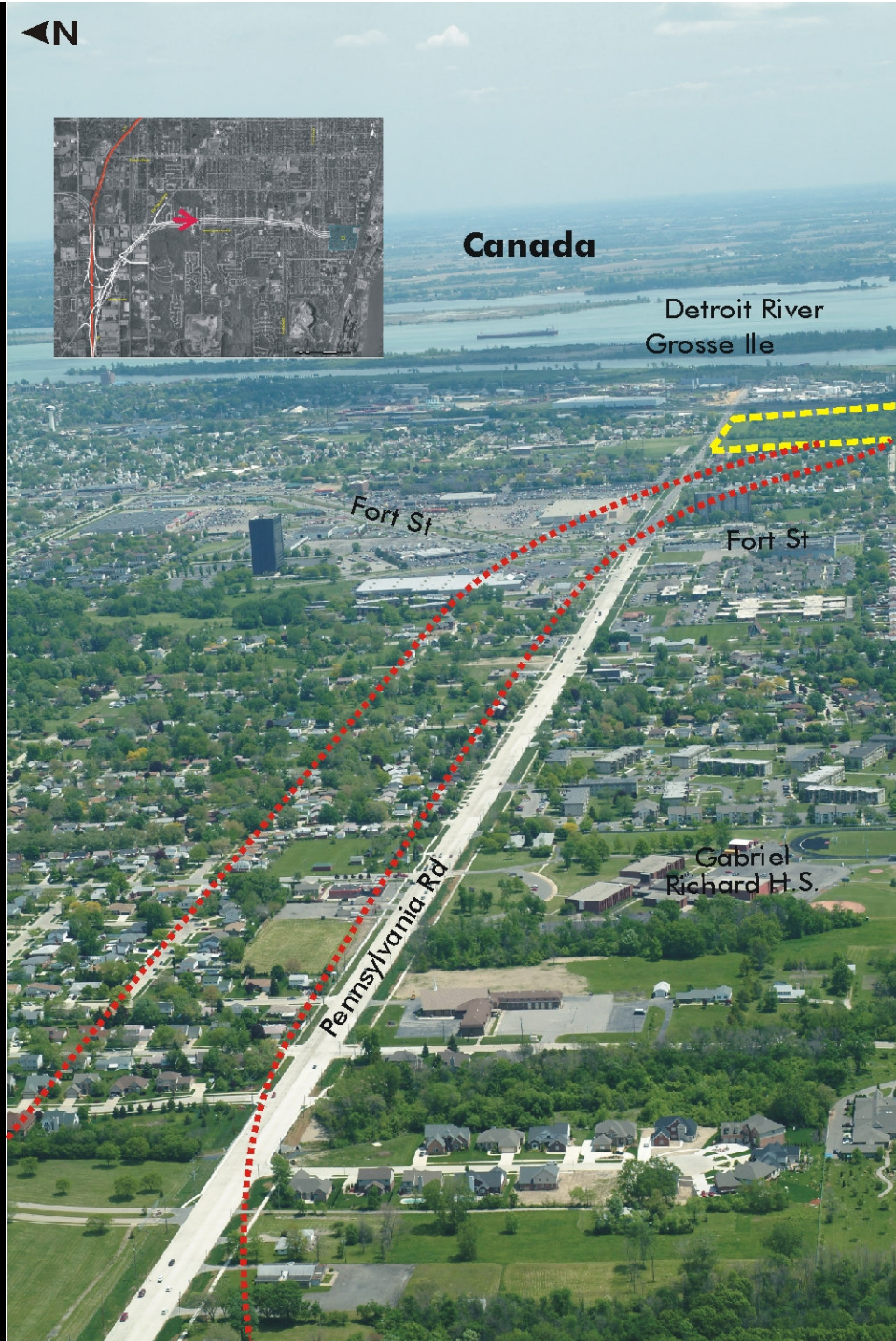
Detroit River
Grosse Ile

Fort St

Fort St

Gabriel
Richard H.S.

Pennsylvania Rd





Canada

Fighting Island

Detroit River

Grosse Ile

Plaza S3

Fort St

K-Mart

Fort St

Trenton Rd

Home Depot

Pennsylvania Rd



Canada

Fighting Island

Detroit River

Grosse Ile

Plaza S3

Fort Street

K-Mart

Fort St

Trenton Rd

Home Depot

Pennsylvania Rd



Canada

Detroit River

Grosse Ile

Wastewater Treatment

Atofina Chemical

Plaza S3

Memorial Park

K-Mart

Senior Housing

Pennsylvania Rd

Fort St



ATOFINA CHEMICAL COMPANY WEST

S3 - POTENTIAL PLAZA SITE

DETROIT RIVER INTERNATIONAL CROSSING

Location: South of Pennsylvania Road, West of Longdorf Street, City of Riverview

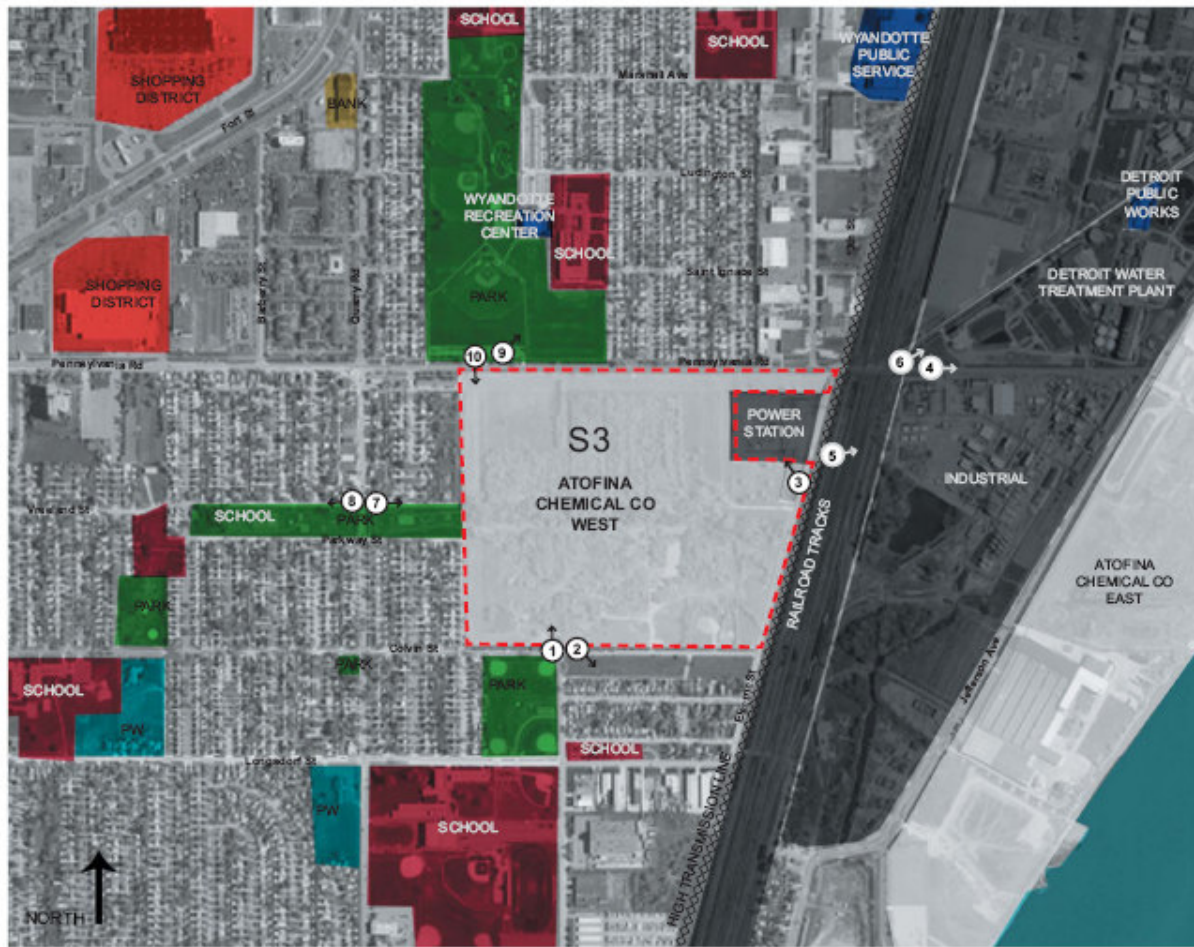
Plaza Size: Approximately 85 acres

This site is primarily natural with few, if any, structures. An electric power facility is adjacent to its north eastern border. The sites western property line is adjacent to a residential neighborhood consisting of single family detached housing. A series of active rail lines are immediately to the west of the site. South of Colvin Street is a single family residential neighborhood.



LEGEND

B	Barber	P	Park
FA	Federal	SEN	Senior Services
L	Laundromat	AA	Avoidance Area
M	Museum	CH	City Hall
PW	Places of Worship	HMS	Homeless Shelter
SHOP	Shopping	MED	Medical Facility
THP	Third Party Places	PS	Police Station
CEM	Cemetery	SC	School
FS	Fire Station	OA	Opportunity Area
LB	Library		



S4 Pennsylvania: I-75 to Plaza



I-76

Eureka Road

Dix Toledo Hwy

Pennsylvania Road

Sibley Road

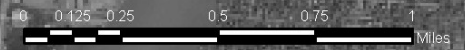
King Road

Fort Street

Fort Street

I-76

S4





◀N

Fighting Island

Grosse Ile

Canada

Detroit River

Plaza S4

Fort Street

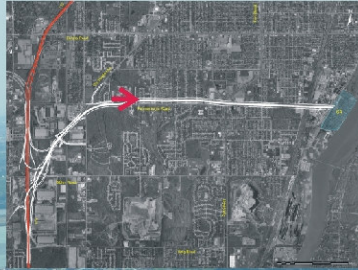
Our Lady of Hope Cemetery
(future expansion area)

Dix-Toledo Highway

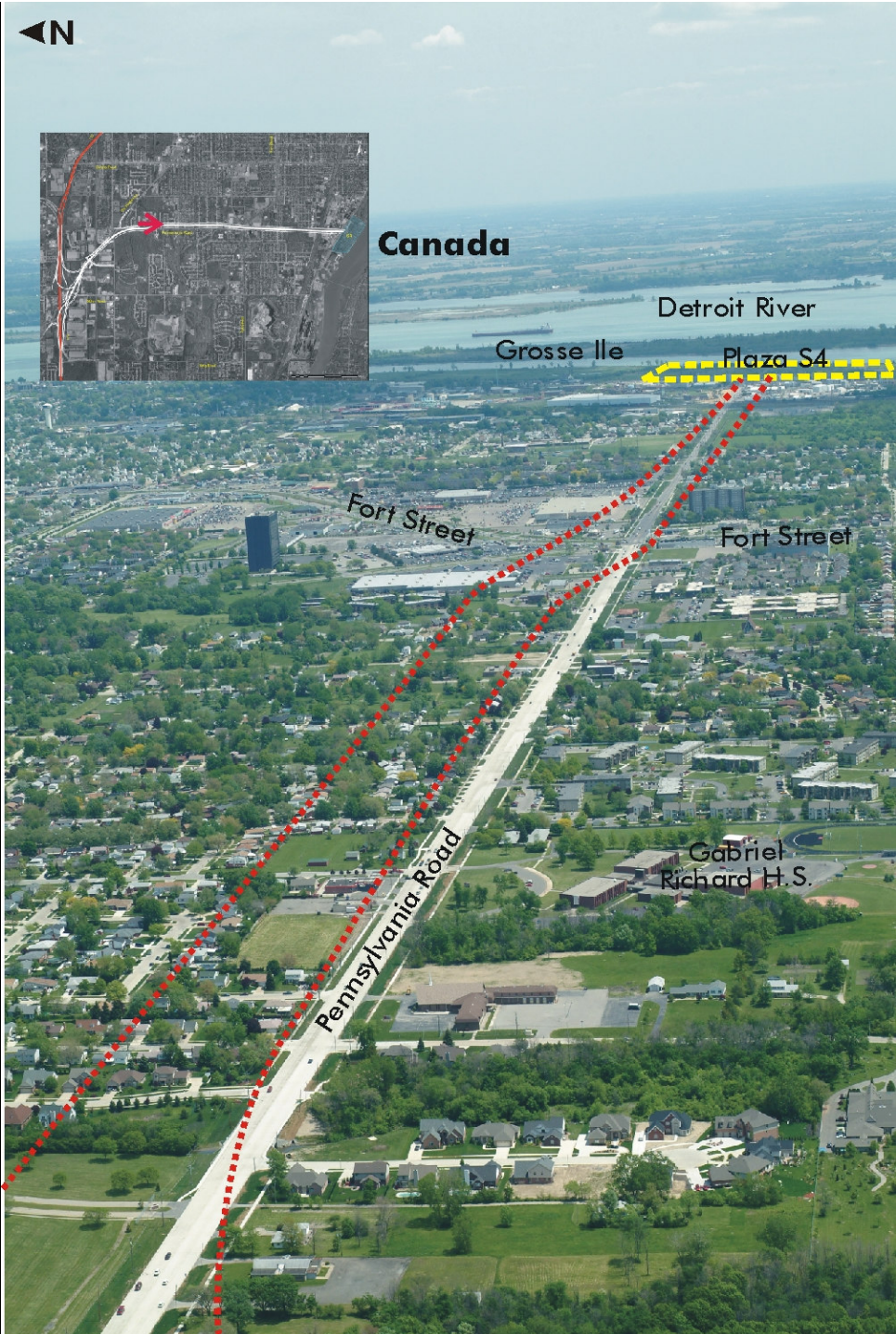
Interchange Area

Allen Road

Pennsylvania Road



Canada



Detroit River

Grosse Ile

Plaza S4

Fort Street

Fort Street

Pennsylvania Road

Gabriel
Richard H.S.



Canada

Fighting Island

Detroit River

Grosse Ile

Plaza S4

Fort Street

K-Mart

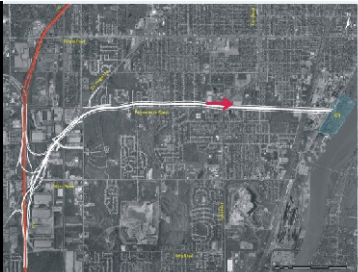
Fort Street

Trenton Road

Home Depot

Pennsylvania Road





Canada

Detroit River

Grosse Ile

Plaza S4

Atofina Chemical

Memorial Park

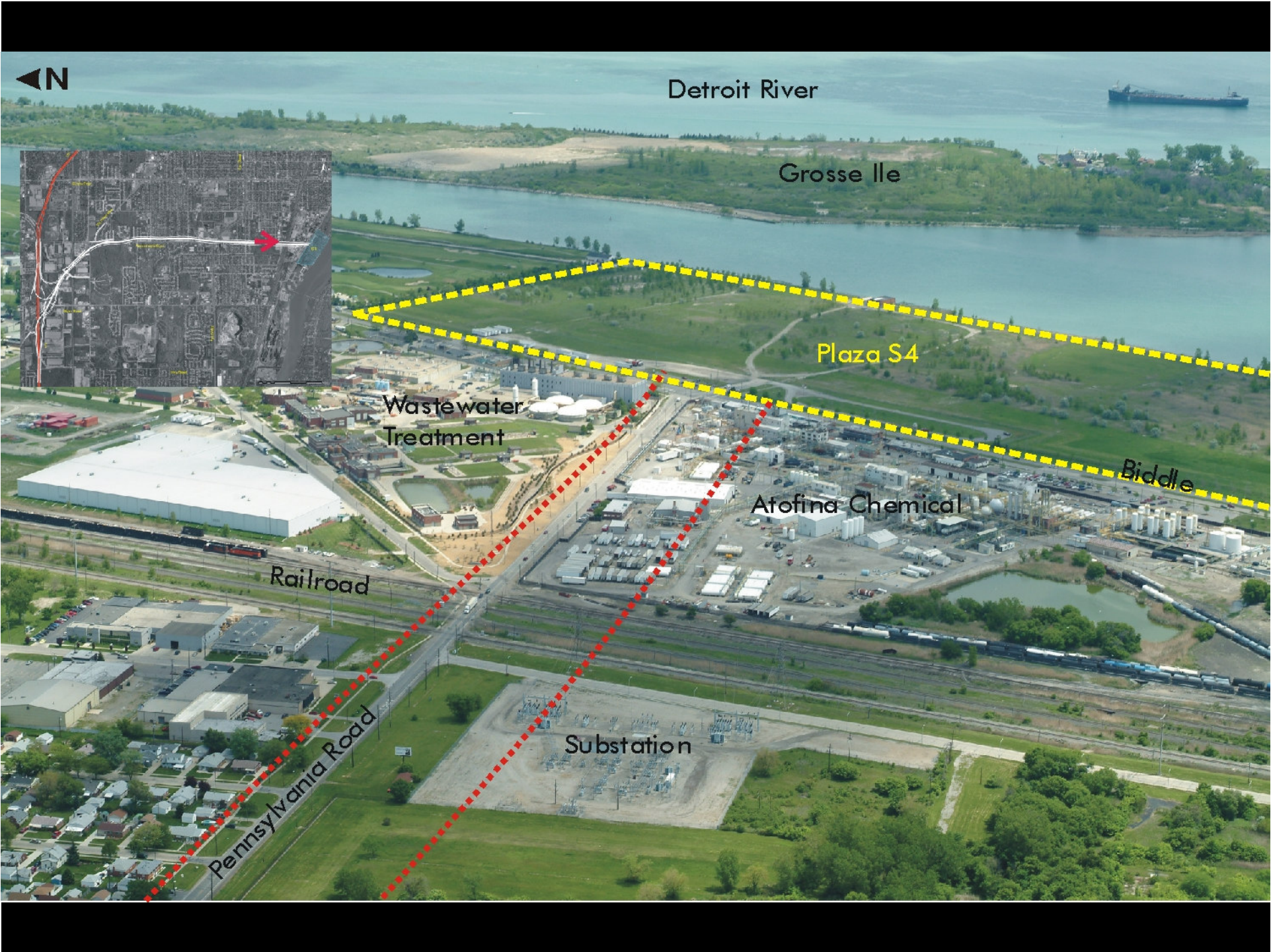
K-Mart

Senior Housing

Pennsylvania Road

Fort Street





◀N

Detroit River

Grosse Ile

Plaza S4

Wastewater Treatment

Atofina Chemical

Biddle

Railroad

Substation

Pennsylvania Road

① Utility Power



② Railroad Tracks



③ Downriver Wastewater Treatment Facility



④ Pennsylvania Avenue



⑤ Akoma Riverview Plant



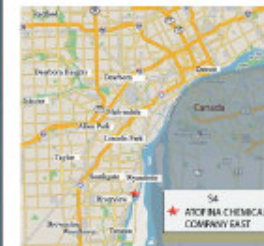
ATOFINA CHEMICAL COMPANY EAST S4 - POTENTIAL PLAZA SITE

DETROIT RIVER INTERNATIONAL CROSSING

Location: East of Middle Avenue, South of the Wyandotte Shores Golf Club; City of Wyandotte

Plaza Size: Approximately 85 acres

This site consists of vacant land and the Prime Material Processing Facility, the latter having limited operations. The site's eastern property line has ample frontage on the Detroit River. Immediately to the north is the Wyandotte Shores Golf Club and northwest of the site is the Detroit Wastewater Treatment Plant.



LEGEND

B	Barb	P	Park
FA	Federal	SEN	Senior Services
L	Laundromat	AA	Avoidance Area
M	Museum	CTH	City Hall
PW	Places of Worship	HMS	Homeless Shelter
SHOP	Shopping	MED	Medical Facility
THP	Third Party Places	PS	Police Station
CEM	Cemetery	SC	School
FS	Fire Station	OA	Opportunity Area
LB	Library		

MDOT
Michigan Department of Transportation
THE CORRADINO GROUP

⑤ Akoma Riverview Plant



⑥ Atofina Chemical Company



⑦ MP Prime Material Processing Inc.



⑧ Detroit Water Treatment Plant



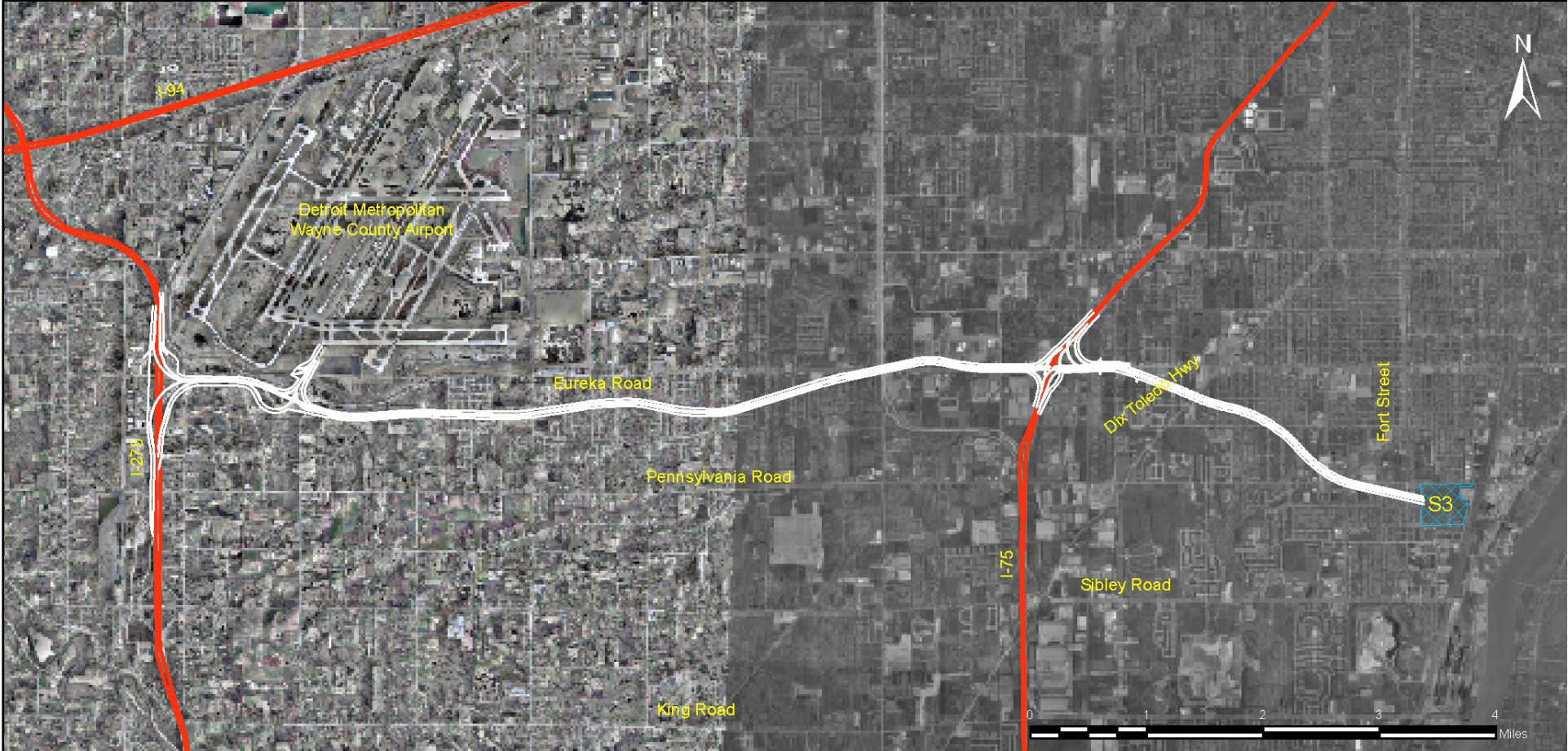
⑨ Atofina Chemical Company



⑩ Atofina Chemical Company



S3 Eureka: I-275 to Plaza





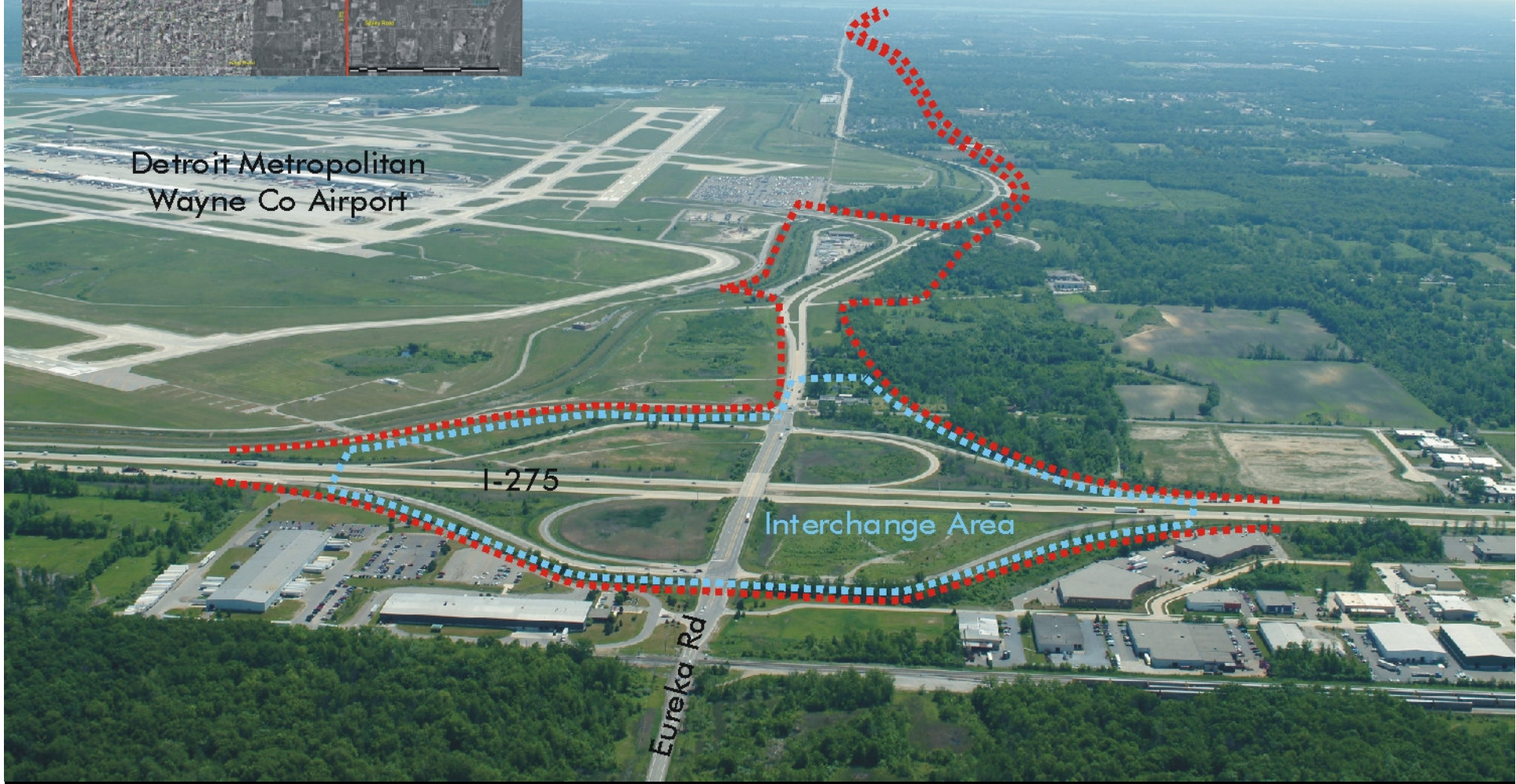
Canada

Detroit Metropolitan
Wayne Co Airport

I-275

Interchange Area

Eureka Rd

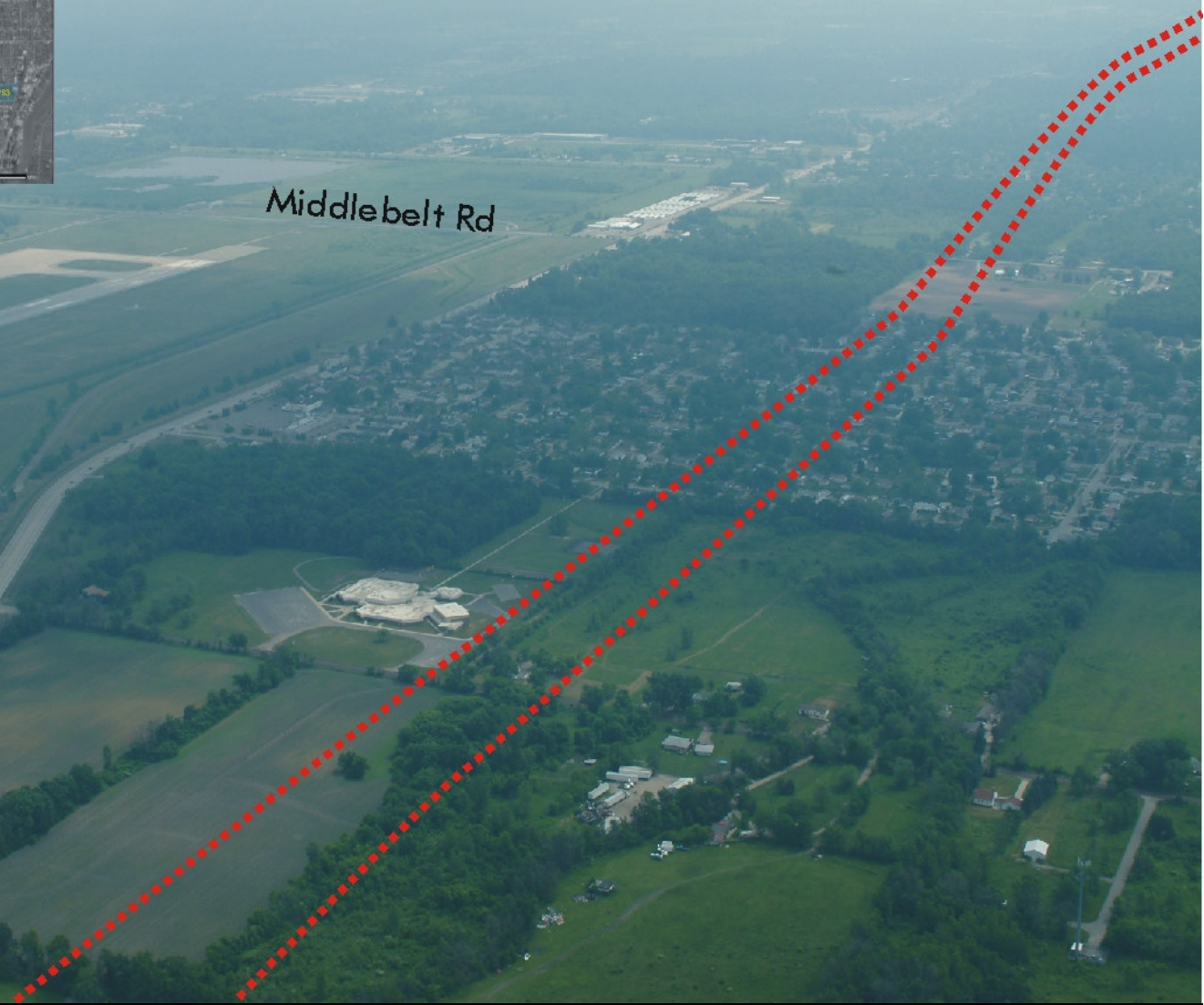


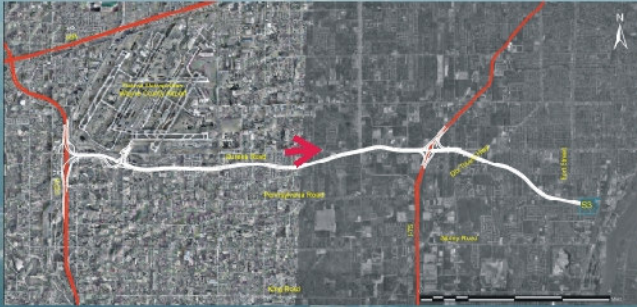
Canada



Middlebelt Rd

Eureka Rd



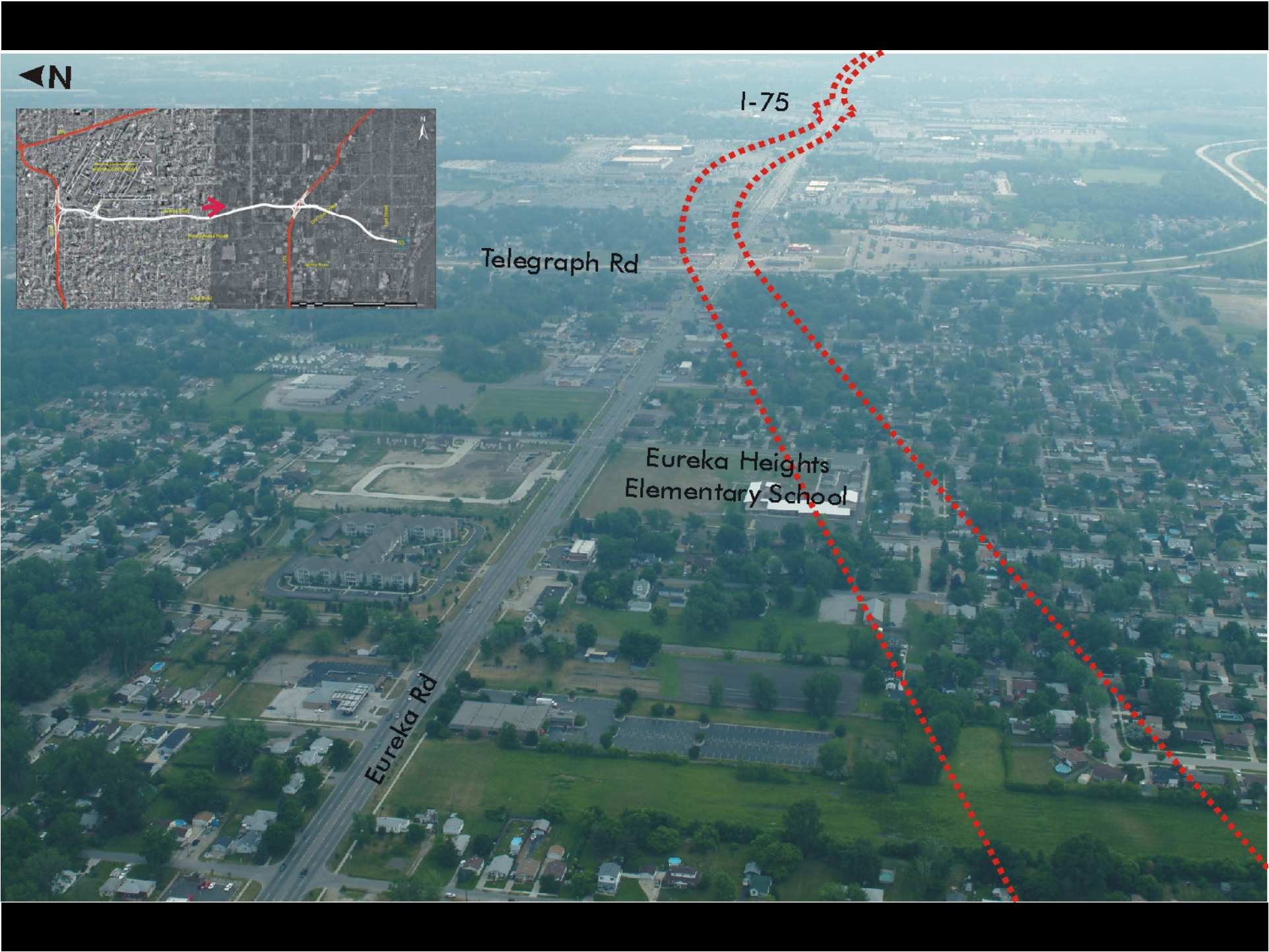


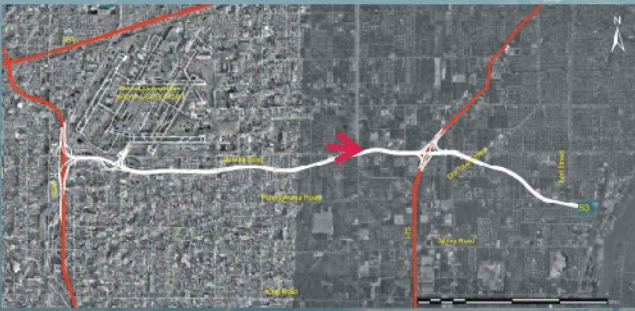
I-75

Telegraph Rd

Eureka Heights
Elementary School

Eureka Rd





I-75

Southland Shopping Center

Telegraph Rd

Eureka Rd





Canada

Detroit River

Grosse Ile

Plaza S3

Dix-Toledo Hwy

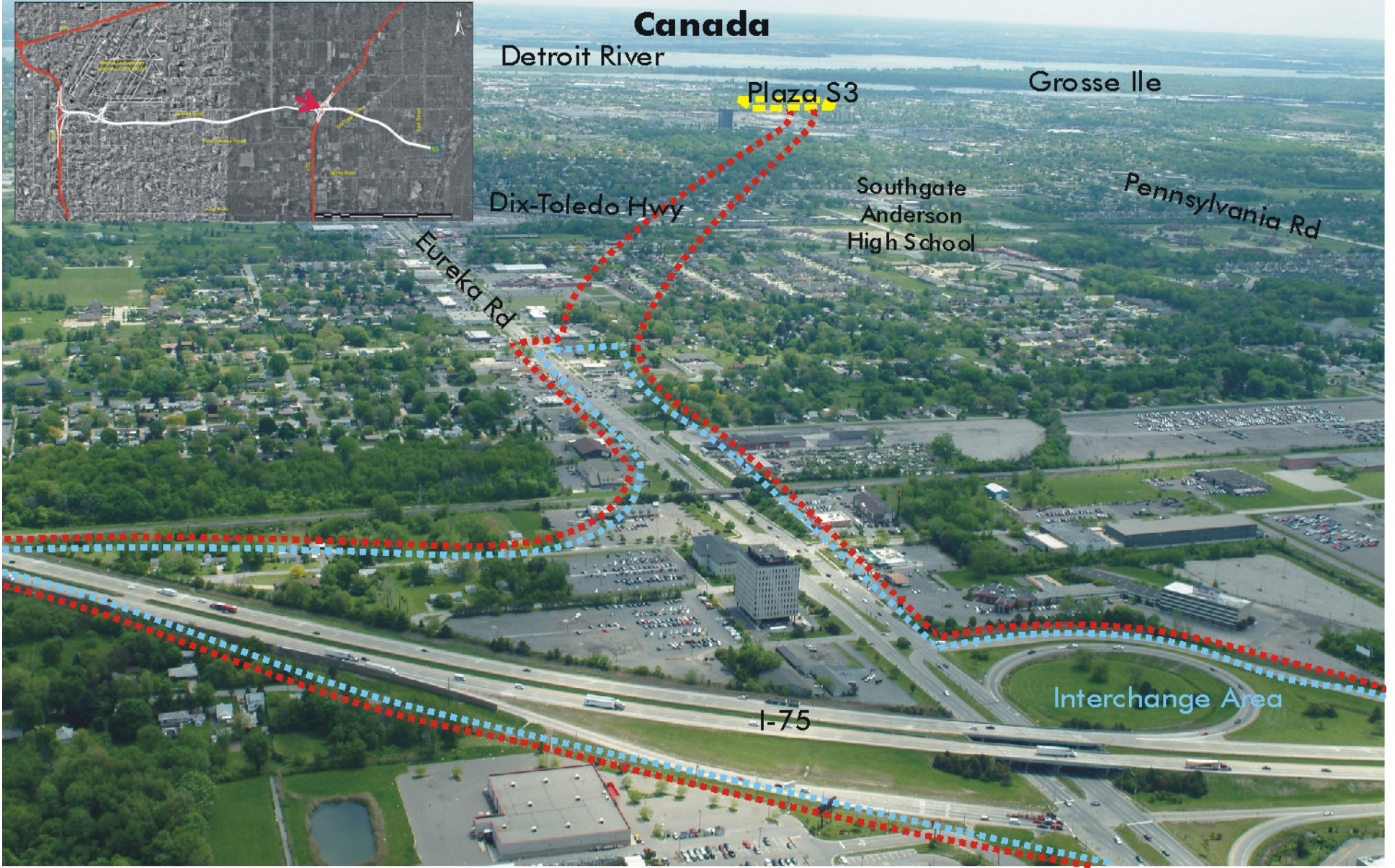
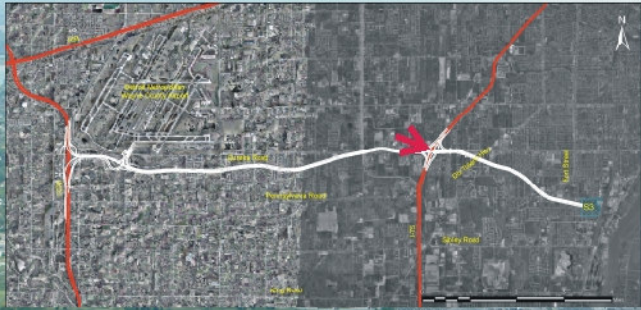
Southgate
Anderson
High School

Pennsylvania Rd

Eureka Rd

I-75

Interchange Area





Canada

Detroit River

Grosse Ile

Plaza S3

Southgate
Anderson
High School

Leroy

Dix-Toledo Hwy



Canada

Detroit River

Grosse Ile

Plaza S3

Fort St

Trenton Rd

Pennsylvania Road





Canada

Detroit River

Grosse Ile

Wastewater
Treatment

Atofina Chemical

Plaza S3

Memorial Park

K-Mart

Senior
Housing

Pennsylvania Road

Fort Street



ATOFINA CHEMICAL COMPANY WEST

S3 - POTENTIAL PLAZA SITE

DETROIT RIVER INTERNATIONAL CROSSING

Location: South of Pennsylvania Road, West of Longdorf Street, City of Riverview

Plaza Size: Approximately 85 acres

This site is primarily natural with few, if any, structures. An electric power facility is adjacent to its north eastern border. The sites western property line is adjacent to a residential neighborhood consisting of single family detached housing. A series of active rail lines are immediately to the west of the site. South of Colvin Street is a single family residential neighborhood.



LEGEND

B	Barber	P	Park
FA	Federal	SEN	Senior Services
L	Laundromat	AA	Avoidance Area
M	Museum	CH	City Hall
PW	Places of Worship	HMS	Homeless Shelter
SHOP	Shopping	MED	Medical Facility
THP	Third Party Places	PS	Police Station
CEM	Cemetery	SC	School
FS	Fire Station	OA	Opportunity Area
LS	Library		



1 Fielded natural area

2 Residential area

3 Utility Power

4 Pennsylvania Road

5 Railroad tracks

6 Downriver Wastewater Treatment Facility

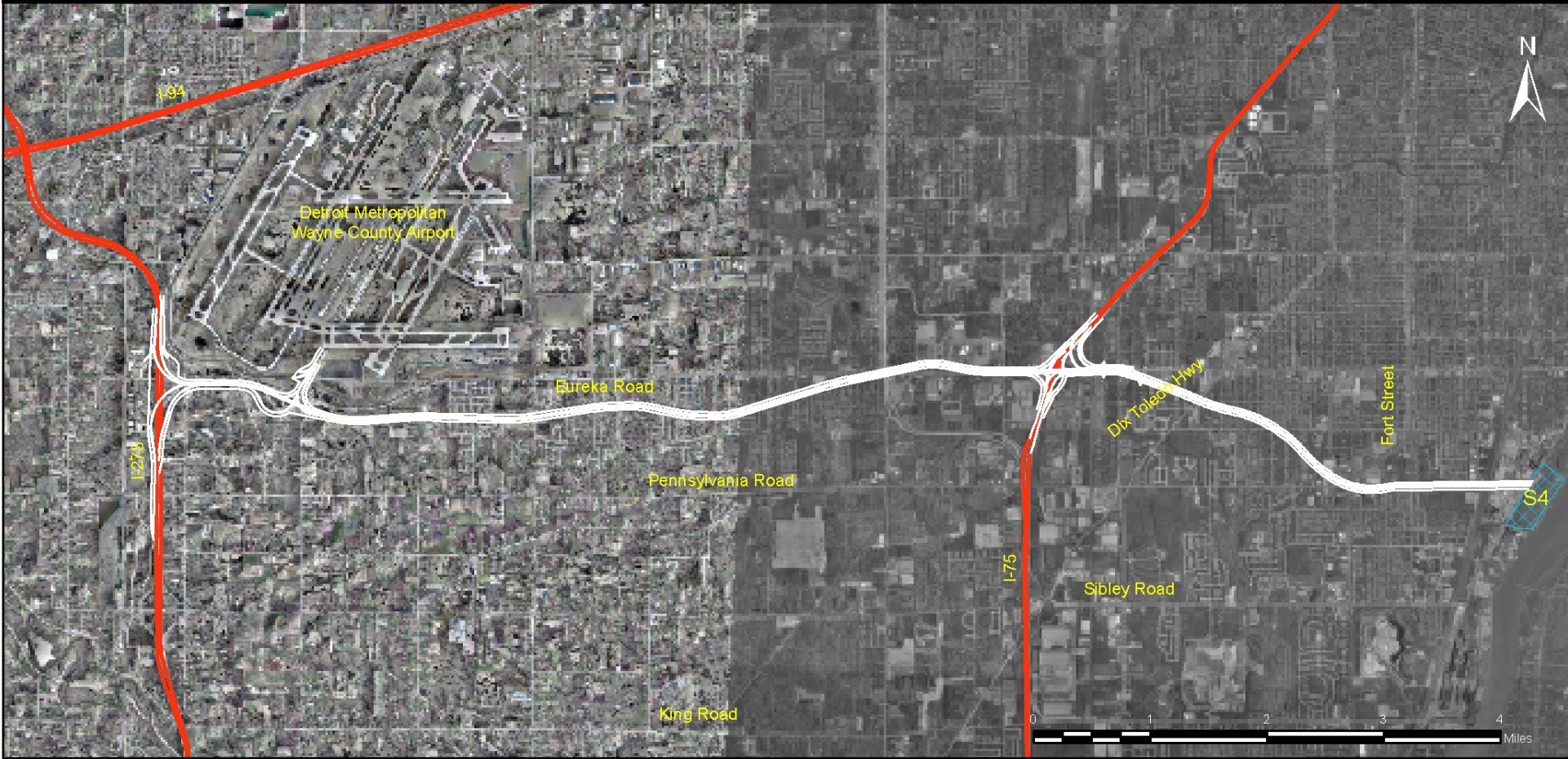
7 Weekend Park

8 Weekend Park

9 School Yard

10 Natural Area

S4 Eureka: I-275 to Plaza





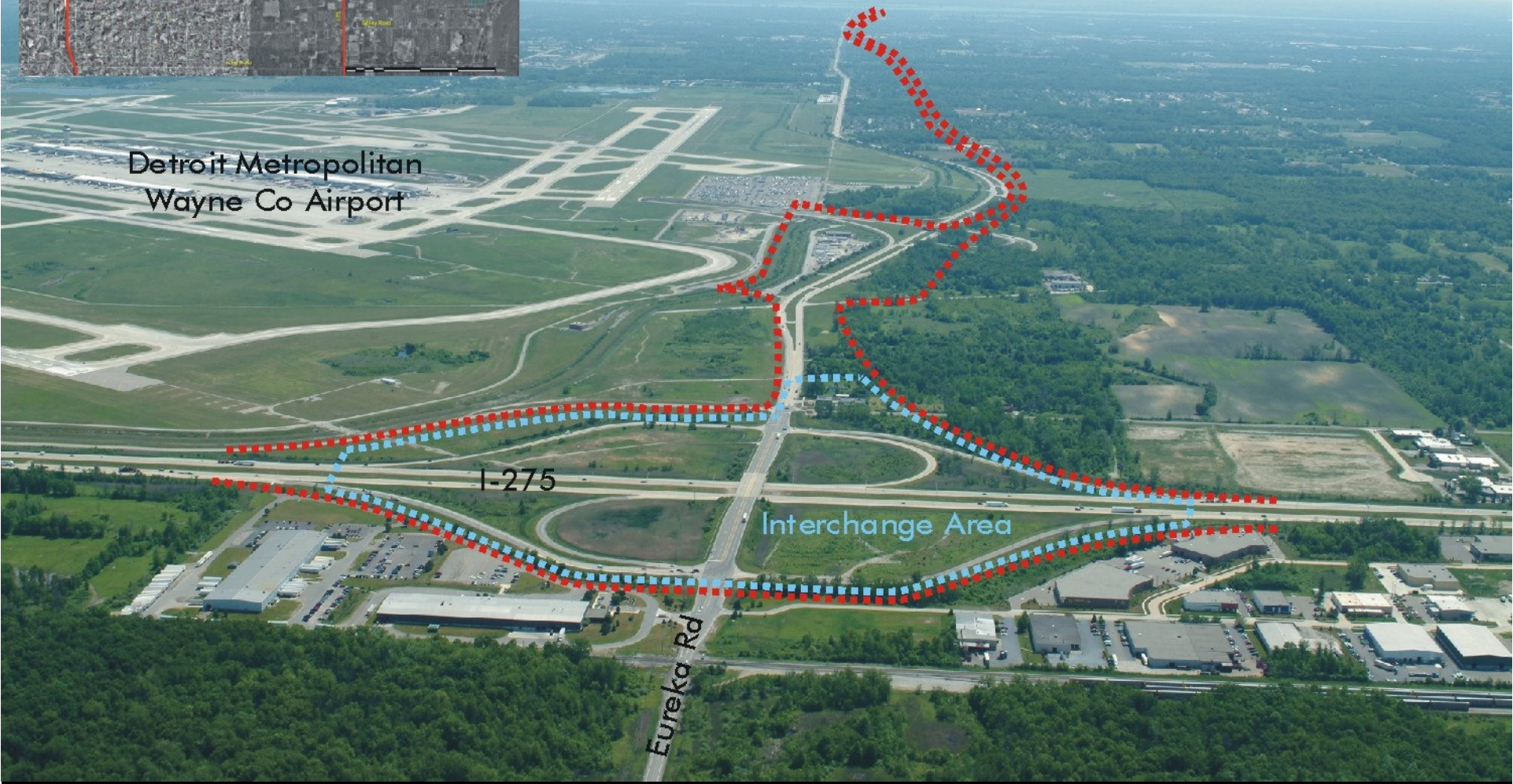
Canada

Detroit Metropolitan
Wayne Co Airport

I-275

Interchange Area

Eureka Rd

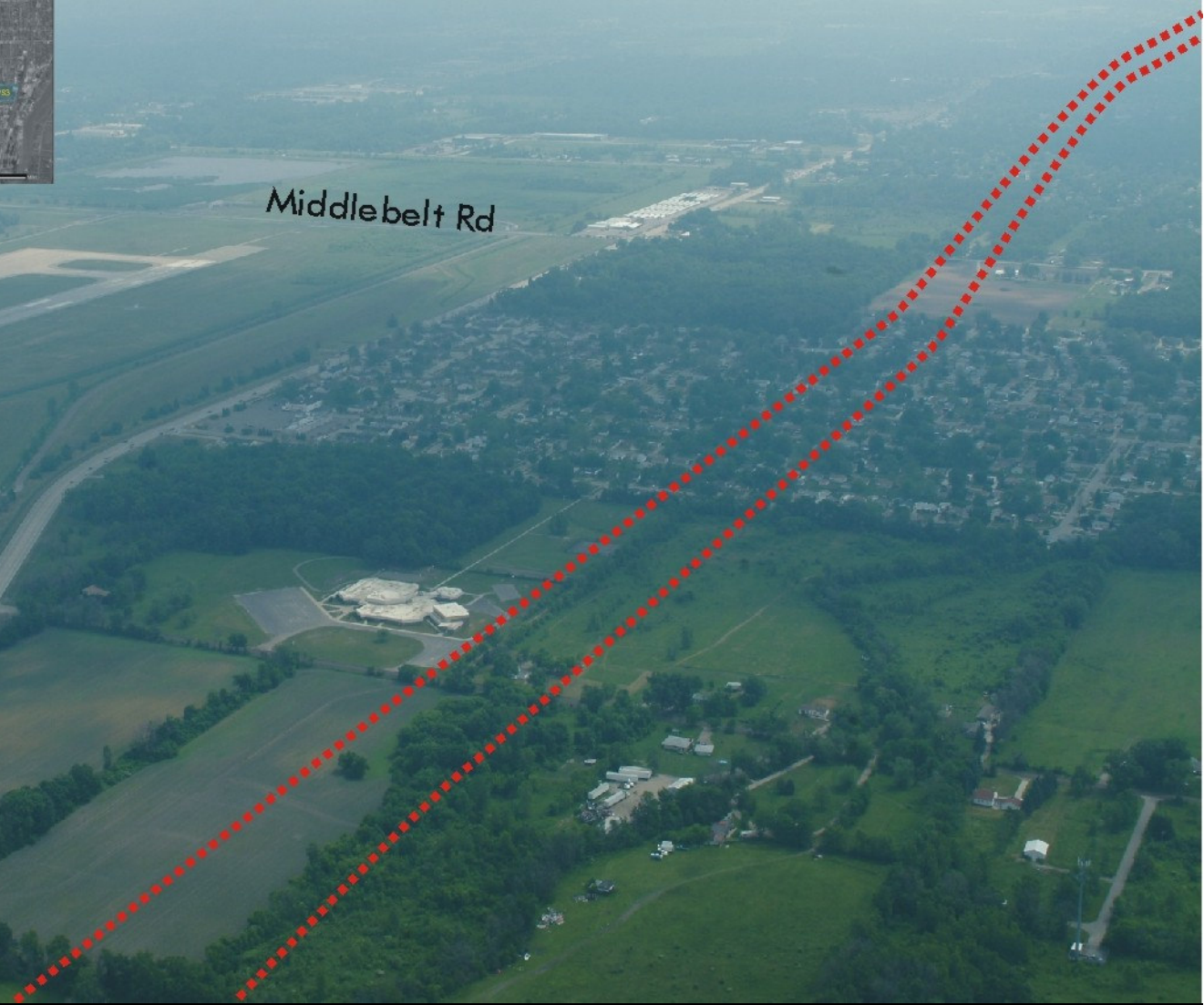


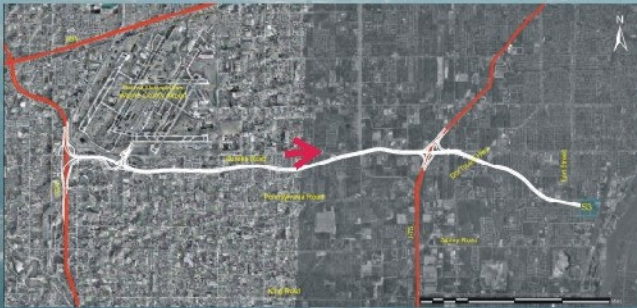
Canada



Middlebelt Rd

Eureka Rd



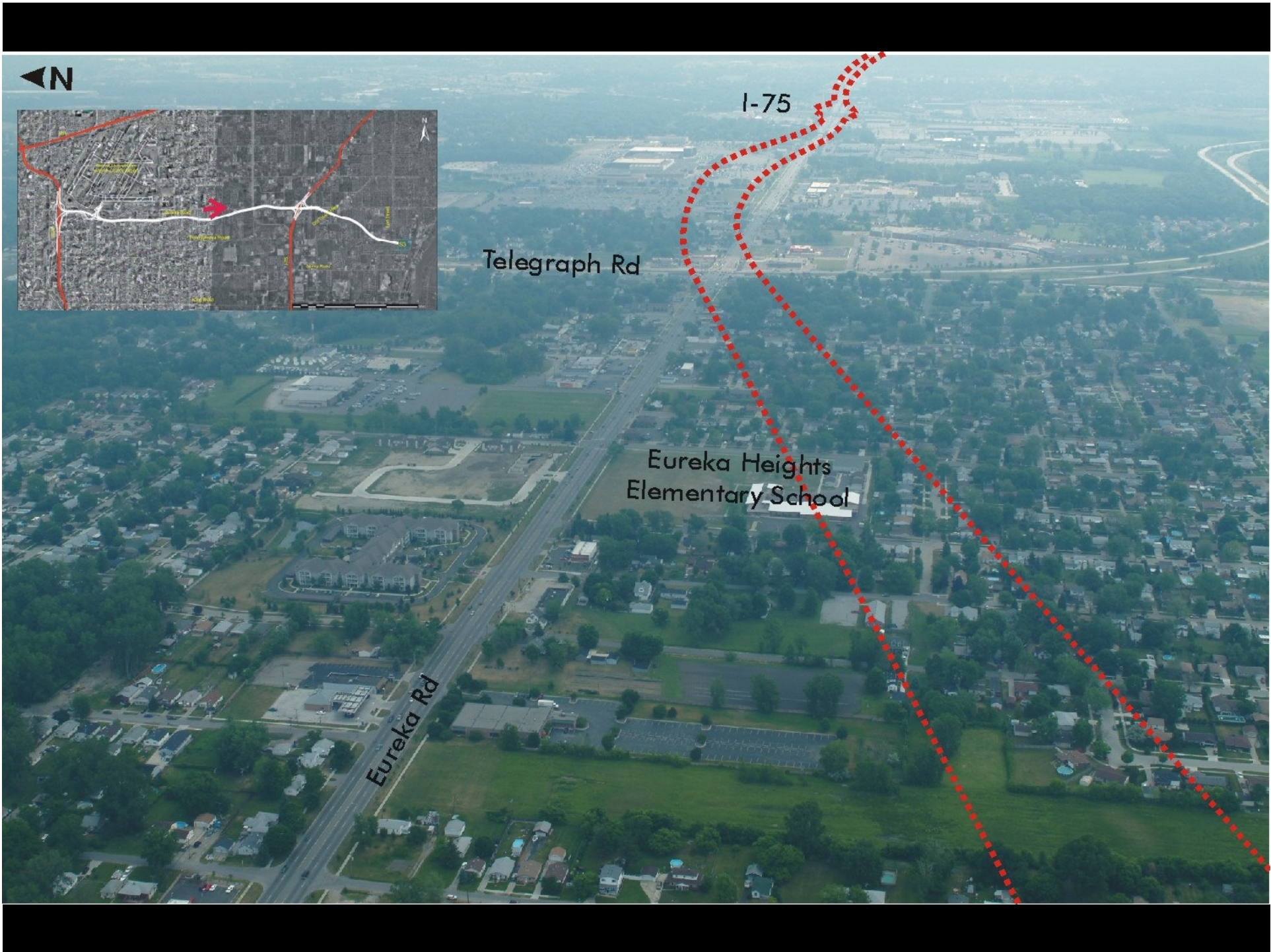


I-75

Telegraph Rd

Eureka Heights
Elementary School

Eureka Rd



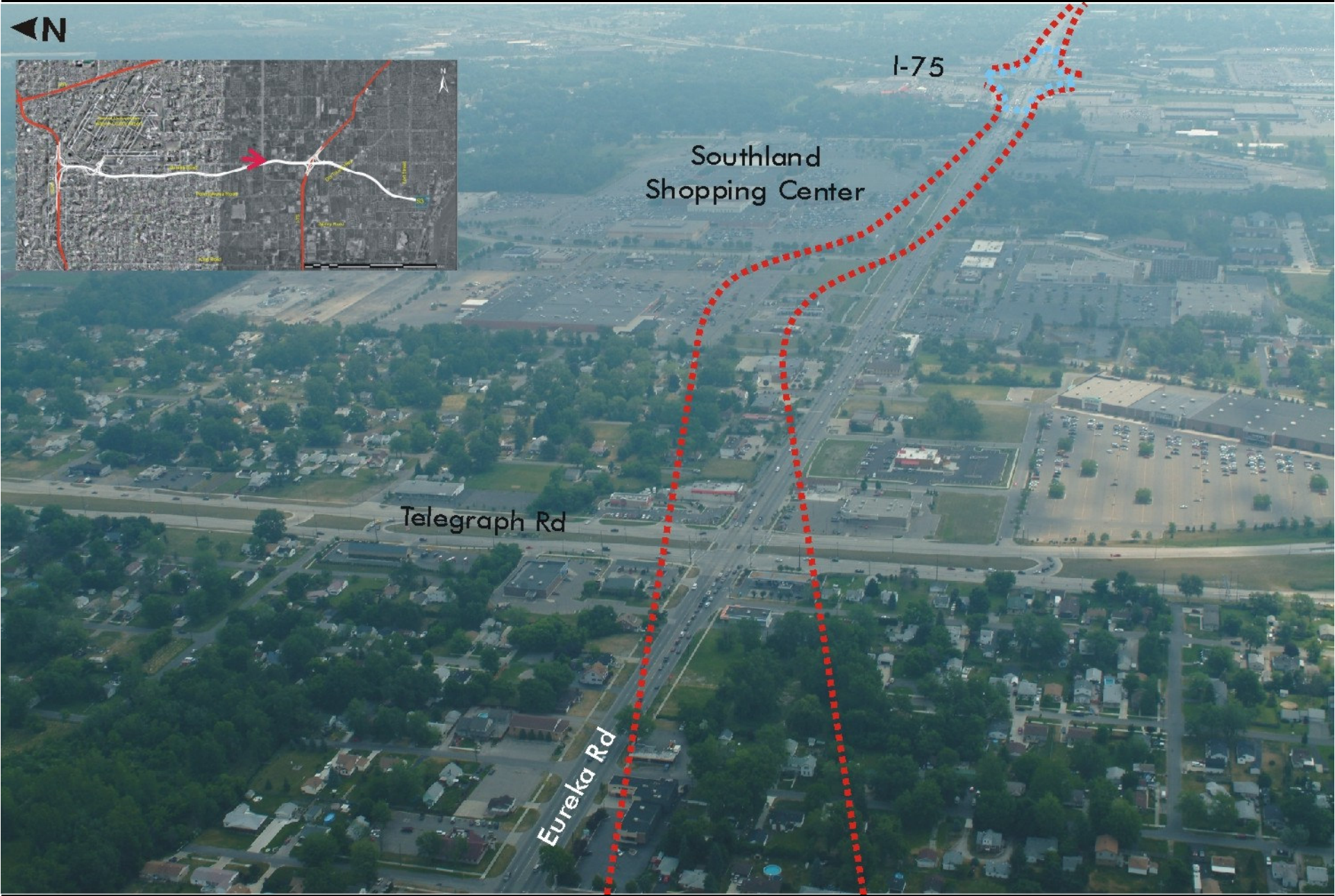


I-75

Southland Shopping Center

Telegraph Rd

Eureka Rd





Canada

Plaza S4

Detroit River

Grosse Ile

Dix-Toledo Hwy

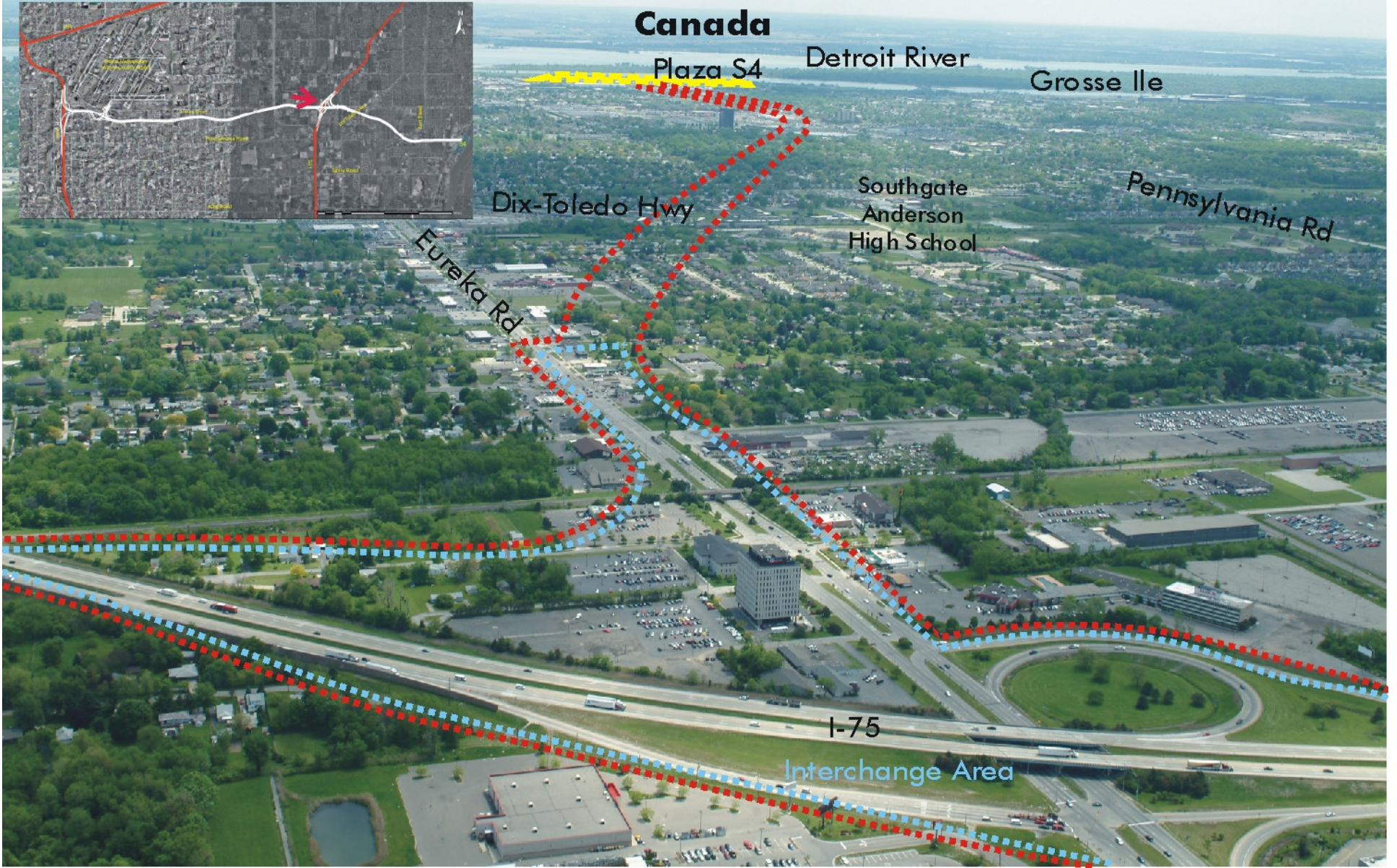
Southgate
Anderson
High School

Pennsylvania Rd

Eureka Rd

I-75

Interchange Area





Canada

Detroit River

Plaza S4

Grosse Ile

Fort St

Pennsylvania Rd

Southgate
Anderson
High School

Leroy

Dix-Toledo Hwy



Canada

Detroit River

Grosse Ile

Plaza S4

Fort St

Pennsylvania Road



Canada

Detroit River

Grosse Ile

Plaza S4

Fort St

Pennsylvania Road



Detroit River

Grosse Ile

Plaza S4

Wastewater Treatment

Atofina Chemical

Biddle

Railroad

Substation

Pennsylvania Road



① Utility Power



② Railroad Tracks



③ Downriver Wastewater Treatment Facility



④ Pennsylvania Avenue



⑤ Akoma Riverview Plant



ATOFINA CHEMICAL COMPANY EAST S4 - POTENTIAL PLAZA SITE

DETROIT RIVER INTERNATIONAL CROSSING

Location: East of Middle Avenue, South of the Wyandotte Shores Golf Club; City of Wyandotte

Plaza Size: Approximately 85 acres

This site consists of vacant land and the Prime Material Processing Facility, the latter having limited operations. The site's eastern property line has ample frontage on the Detroit River. Immediately to the north is the Wyandotte Shores Golf Club and northwest of the site is the Detroit Wastewater Treatment Plant.



LEGEND

B	Barb	P	Park
FA	Federal	SEN	Senior Services
L	Laundromat	AA	Avoidance Area
M	Museum	CTH	City Hall
PW	Places of Worship	HMS	Homeless Shelter
SHOP	Shopping	MED	Medical Facility
THP	Third Party Places	PS	Police Station
CEM	Cemetery	SC	School
FS	Fire Station	OA	Opportunity Area
LB	Library		

MDOT
Michigan Department of Transportation
THE CORRADINO GROUP

⑦ MP Prime Material Processing Inc.



⑧ Detroit Water Treatment Plant



⑨ Atofina Chemical Company



⑩ Atofina Chemical Company



S5 Moran: I-75 to Plaza





Canada



Plaza S5

Detroit River

Carr Elementary

Fort St

Dix Hwy

Water Treatment

Moran Ave

Interchange Area

I-75





Canada

Fighting Island

Detroit River

Mud Island

Plaza S5

Council Point Park

Ecorse River

Mixer Elementary

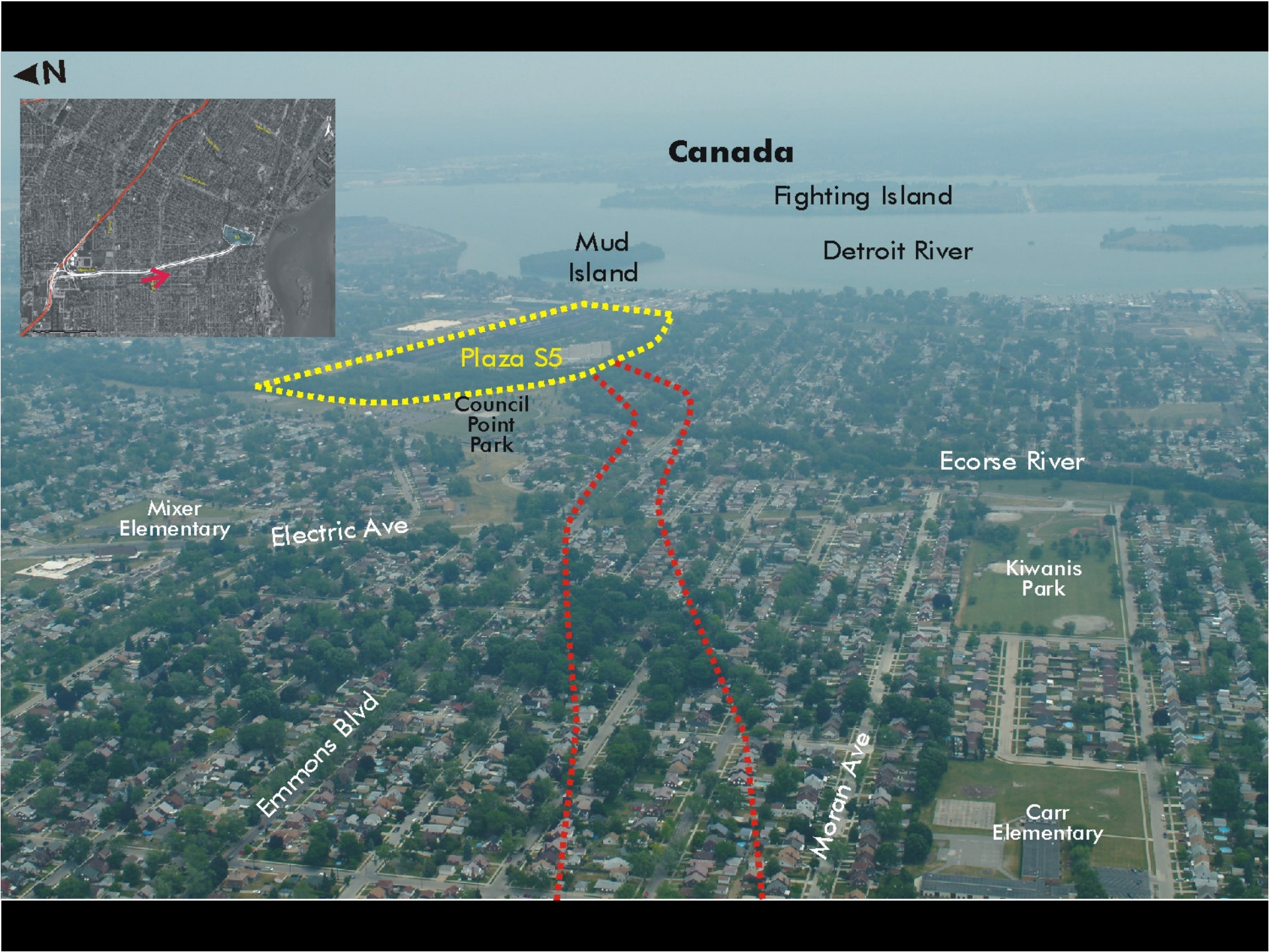
Electric Ave

Kiwanis Park

Emmons Blvd

Moran Ave

Carr Elementary





MICHIGAN STEEL WORKS COMPANY S5 - POTENTIAL PLAZA SITE

DETROIT RIVER INTERNATIONAL CROSSING

Location: South of MI Street, west of Bidwell Jefferson Avenue, City of Ecorse

Plaza Size: Approximately 70 acres

This is the site of the former Michigan Steel Works Company. It consists of large, vacant buildings that were used for the production of steel. The buildings are in very poor condition. To the north of MI Street are small houses on small urban lots. East of 4th Street and south of Suburban Street is an industrial building occupied by the Crown Group. The east side of the site borders active rail lines and an above grade electric line. The site abuts Council Point Park on the west.



Potential Proposed Plaza Site

LEGEND

B Banks	P Parks
FA Federal	SEN Senior Services
L Laundromat	AA Avoidance Area
M Museum	CVH City Hall
PW Places of Worship	HMLS Homeless Shelter
SHOP Shopping	MED Medical Facility
TPP Third Party Places	PS Police Station
CEM Cemetery	SC School
FS Fire Stations	OA Opportunity Areas
LS Library	

MDOT
Michigan Department of Transportation
THE CORRADINO GROUP



1) Glomar Steel Company



2) Michigan Steel Works Company



3) Michigan Steel Works Company



4) Residential area



5) Michigan Steel Works Company



6) Glomar Steel Company



7) Riverfront



8) Public park



9) Boat Storage

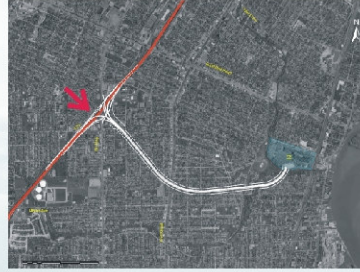


10) Residential area



S5 Dix: I-75 South to Plaza





Canada

Fighting Island

Detroit River

Fort St

Foote
Elementary

Dix Hwy

Interchange
Area

I-75



Canada

Fighting Island

Detroit River

Ecorse Creek

Plaza S5

Council
Point
Park

Mixler
Elementary

Ford
Park

Fort St

Lincoln Park Plaza

Christ the
Good Shepard
Elementary





Canada

Fighting Island
Grassy Island

Detroit River

Plaza S5

Council Point
Park

Mixler
Elementary

Electric Ave

Page 1





Canada

Fighting Island

Detroit River

Mud Island



Jefferson Ave

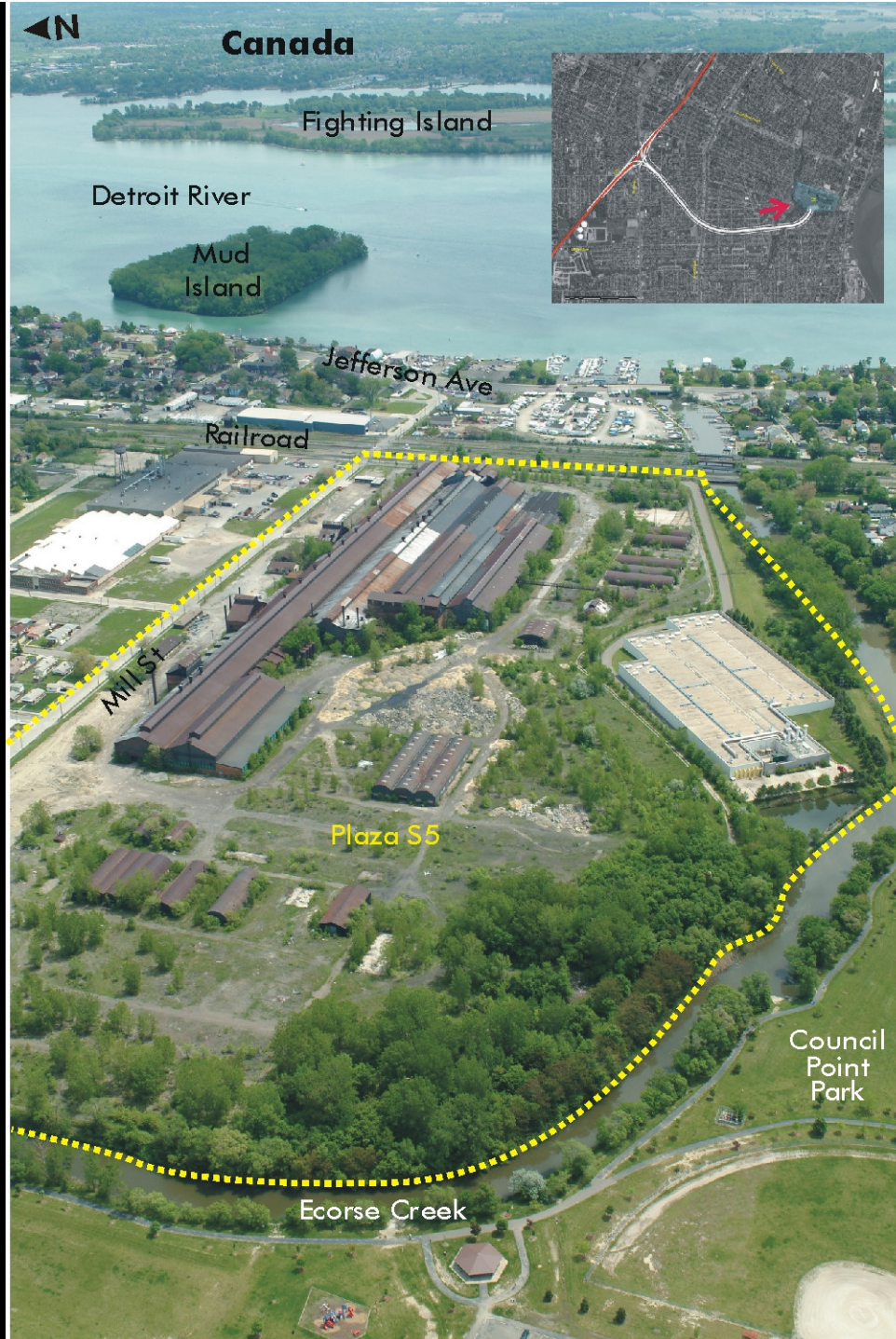
Railroad

Mill St

Plaza S5

Council Point Park

Ecorse Creek



1) Glomar Steel Company



2) Michigan Steel Works Company



3) Michigan Steel Works Company



4) Residential area



5) Michigan Steel Works Company



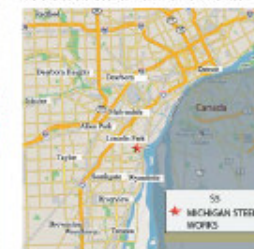
MICHIGAN STEEL WORKS COMPANY S5 - POTENTIAL PLAZA SITE

DETROIT RIVER INTERNATIONAL CROSSING

Location: South of MI Street, west of Bidwell W. Jefferson Avenue, City of Ecorse

Plaza Size: Approximately 70 acres

This is the site of the former Michigan Steel Works Company. It consists of large, vacant buildings that were used for the production of steel. The buildings are in very poor condition. To the north of MI Street are small houses on small urban lots. East of 4th Street and south of Suburban Street is an industrial building occupied by the Crown Group. The east side of the site borders active rail lines and an above grade electric line. The site abuts Council Point Park on the west.



Potential Proposed Plaza Site

LEGEND

B	Barbs	P	Parks
FA	Federal	SEN	Senior Services
L	Laundromat	AA	Avoidance Area
M	Museum	CVH	City Hall
PW	Places of Worship	HMLS	Homeless Shelter
SHOP	Shopping	MED	Medical Facility
TPP	Third Party Places	PS	Police Station
CEM	Cemetery	SC	School
FS	Fire Stations	OA	Opportunity Areas
LS	Library		

MDOT
Michigan Department of Transportation
THE CORRADINO GROUP

7) Riverfront



8) Public park



9) Boat Storage

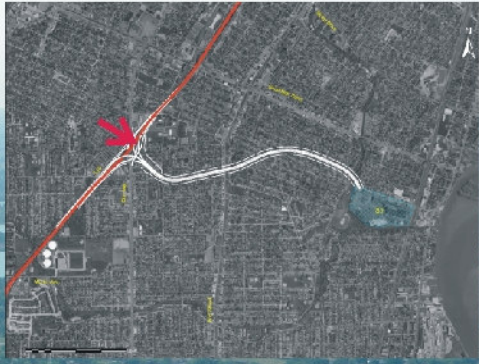


10) Residential area



S5 Dix: I-75 North to Plaza





Canada

Detroit River

Fort St

Foote
Elementary

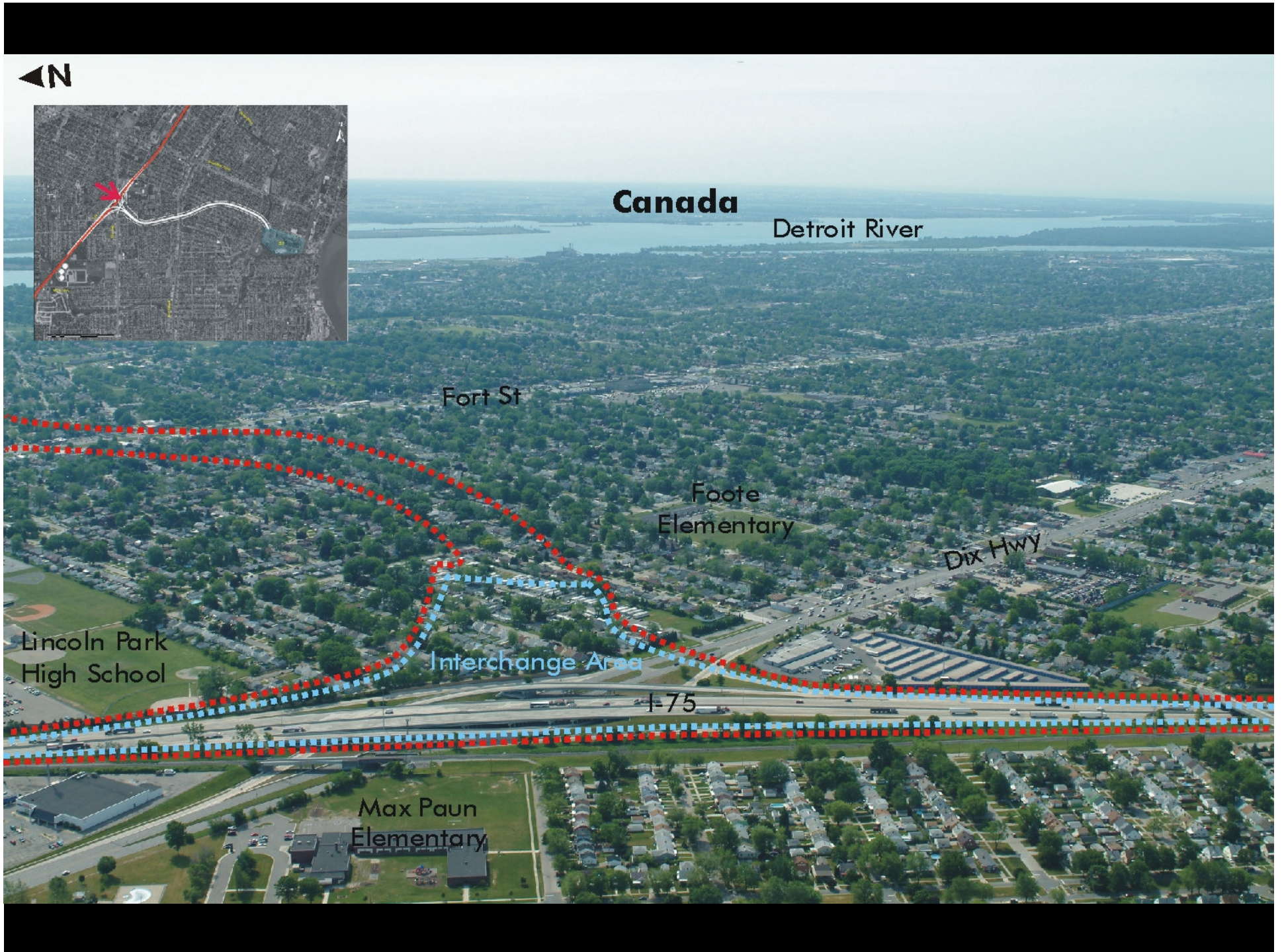
Dix Hwy

Lincoln Park
High School

Interchange Area

I-75

Max Paun
Elementary





◀N

Fighting Island
Grassy Island

Detroit River

Southfield Rd

Plaza S5

Keppan
Elementary

Fort St

Champaign

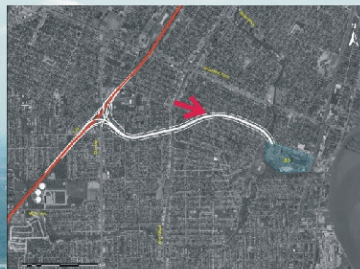
Lincoln Park
Middle School

Lincoln Park
High School

I-75

Interchange Area





Canada

Fighting Island

Grassy Island

Detroit River

Mud Island

Southfield Rd

Grandport Elementary

Plaza S5

Ecorse Creek

Keppan Elementary



Canada

Fighting Island

Detroit River

Mud Island



Jefferson Ave

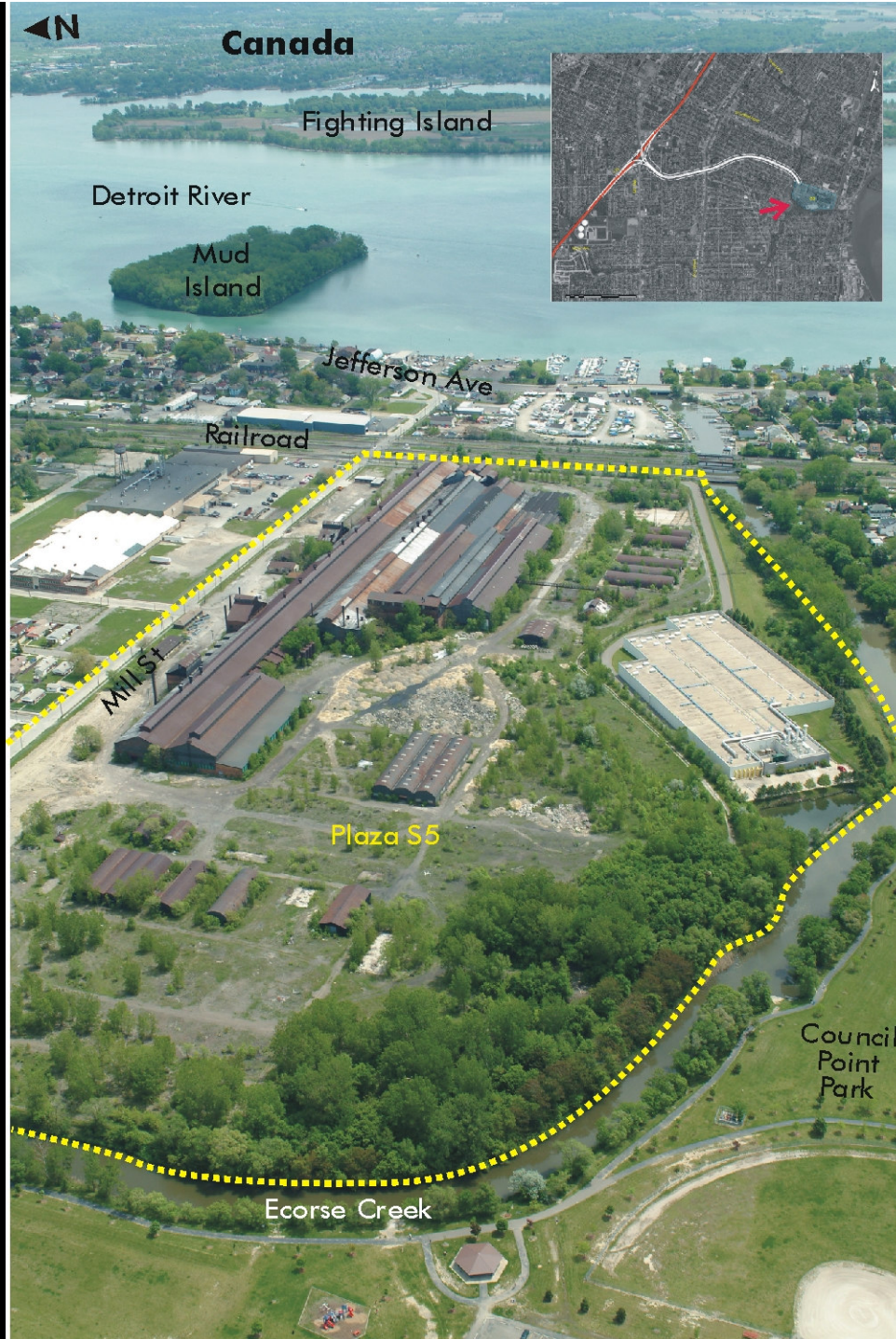
Railroad

Mill St

Plaza S5

Council Point Park

Ecorse Creek



MICHIGAN STEEL WORKS COMPANY S5 - POTENTIAL PLAZA SITE

DETROIT RIVER INTERNATIONAL CROSSING

Location: South of MI Street, west of Bidwell Jefferson Avenue, City of Ecorse

Plaza Size: Approximately 70 acres

This is the site of the former Michigan Steel Works Company. It consists of large, vacant buildings that were used for the production of steel. The buildings are in very poor condition. To the north of MI Street are small houses on small urban lots. East of 4th Street and south of Suburban Street is an industrial building occupied by the Crown Group. The east side of the site borders active rail lines and an above grade electric line. The site abuts Council Point Park on the west.



Potential Proposed Plaza Site

LEGEND

B Banks	P Parks
FA Federal	SEN Senior Services
L Laundromat	AA Avoidance Area
M Museum	CVH City Hall
PW Places of Worship	HMLS Homeless Shelter
SHOP Shopping	MED Medical Facility
TPP Third Party Places	PS Police Station
CEM Cemetery	SC School
FS Fire Stations	OA Opportunity Areas
LS Library	

MDOT
Michigan Department of Transportation
THE CORRADINO GROUP



1) Glomar Steel Company



2) Michigan Steel Works Company



3) Michigan Steel Works Company



4) Residential area



5) Michigan Steel Works Company



6) Glomar Steel Company



7) Riverfront



8) Public park



9) Boat Storage



10) Residential area



S5 Southfield: I-94 to Plaza





Detroit River

Canada

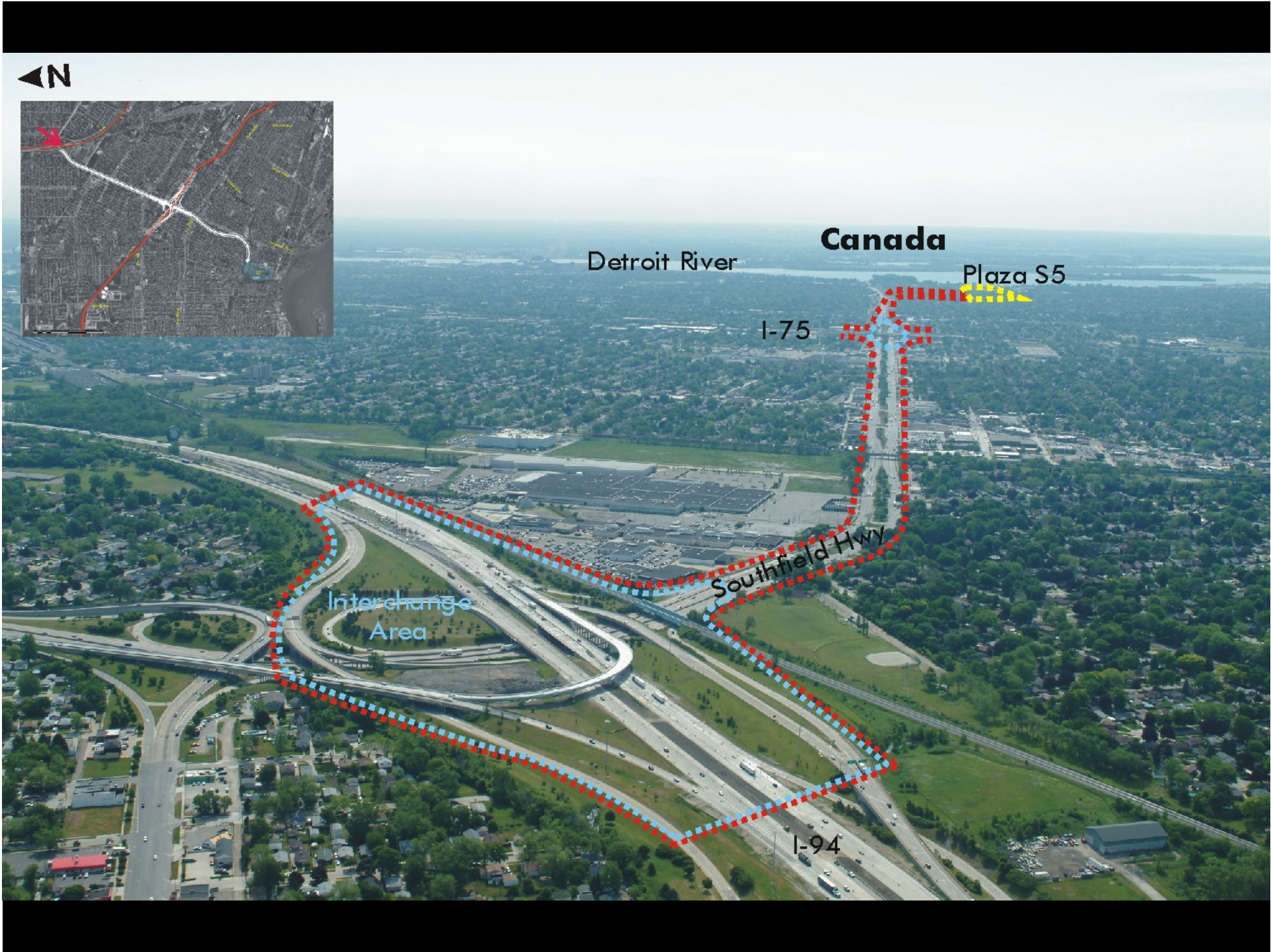
Plaza S5

I-75

Interchange Area

Southfield Hwy

I-94





Canada

Detroit River

Plaza S5

Fort St

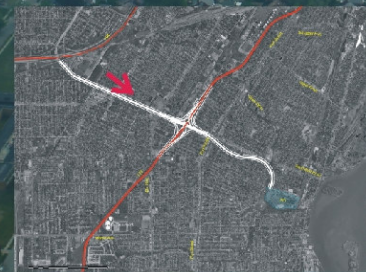
I-75

Interchange Area

Dix Hwy

Lincoln Park Shopping Center

Southfield Hwy





Canada

Fighting Island

Detroit River

Plaza S5

Southfield Rd

Fort St

Interchange
Area

I-75





Canada

Fighting Island

Detroit River

Mud Island



Grandport
Elementary

Ecorse Creek

Southfield Rd







Canada

Fighting Island

Detroit River

Mud Island



Jefferson Ave

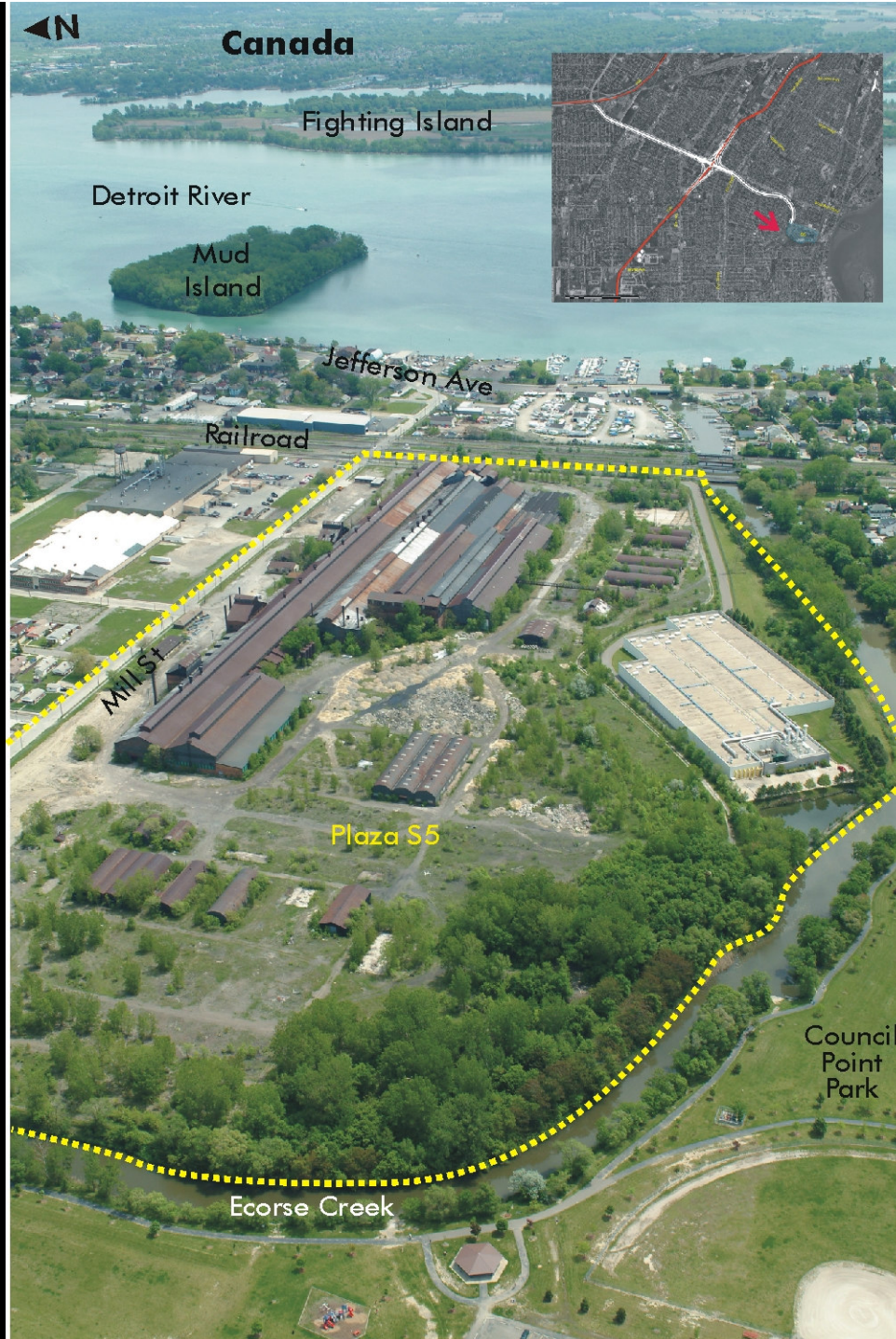
Railroad

Mill St

Plaza S5

Council Point Park

Ecorse Creek



MICHIGAN STEEL WORKS COMPANY S5 - POTENTIAL PLAZA SITE

DETROIT RIVER INTERNATIONAL CROSSING

Location: South of MI Street, west of Bidwell Jefferson Avenue, City of Ecorse

Plaza Size: Approximately 70 acres

This is the site of the former Michigan Steel Works Company. It consists of large, vacant buildings that were used for the production of steel. The buildings are in very poor condition. To the north of MI Street are small houses on small urban lots. East of 4th Street and south of Suburban Street is an industrial building occupied by the Crown Group. The east side of the site borders active rail lines and an above grade electric line. The site abuts Council Point Park on the west.



Potential Proposed Plaza Site

LEGEND

B Banks	P Parks
FA Federal	SEN Senior Services
L Laundromat	AA Avoidance Area
M Museum	CVH City Hall
PW Places of Worship	HMLS Homeless Shelter
SHOP Shopping	MED Medical Facility
TPP Third Party Places	PS Police Station
CEM Cemetery	SC School
FS Fire Stations	OA Opportunity Areas
LS Library	

MDOT
Michigan Department of Transportation
THE CORRADINO GROUP



1) Glomar Steel Company



2) Michigan Steel Works Company



3) Michigan Steel Works Company



4) Residential area



5) Michigan Steel Works Company



6) Glomar Steel Company



7) Riverfront



8) Public park



9) Boat Storage



10) Residential area

