

# **The Detroit River International Crossing Study**

An aerial photograph of the Detroit River, showing the cityscapes of Detroit, Michigan on the left and Windsor, Ontario on the right. The river flows from the background towards the foreground. The sky is overcast with light clouds. A green horizontal bar is visible at the top of the image, just below the main title.

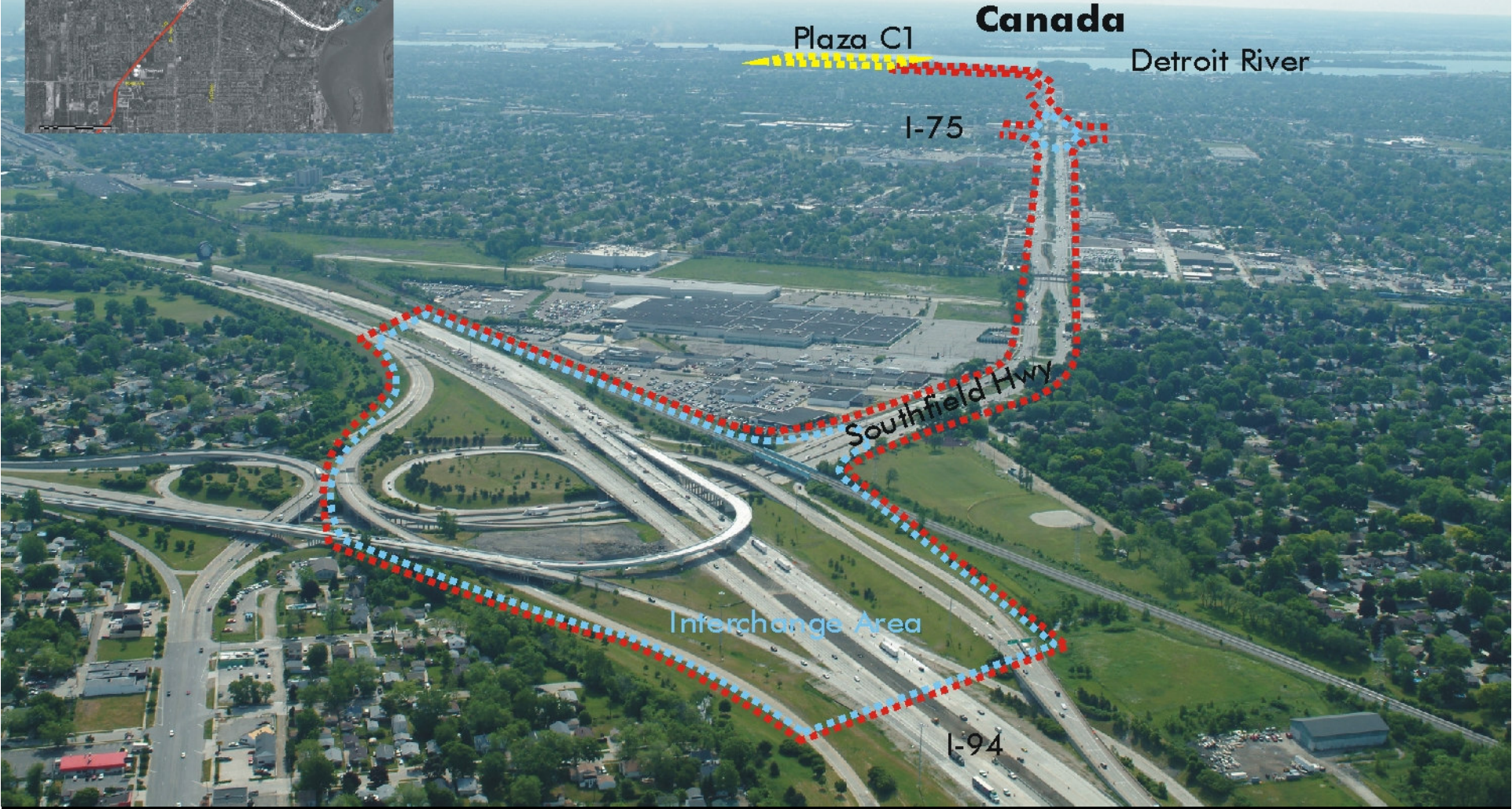
## **Description of Preliminary Illustrative Alternatives**

### **Central Area**

**June 2005**

**C1 Southfield: I-94 to Plaza**







**Canada**

Detroit River

Plaza C1

Fort St

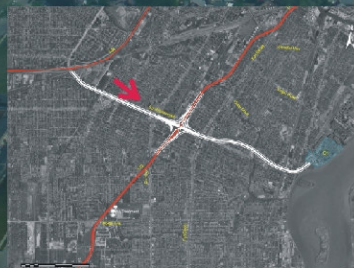
I-75

Interchange Area

Dix Hwy

Lincoln Park  
Shopping Center

Southfield Hwy





**Canada**

Plaza C1

Fighting Island

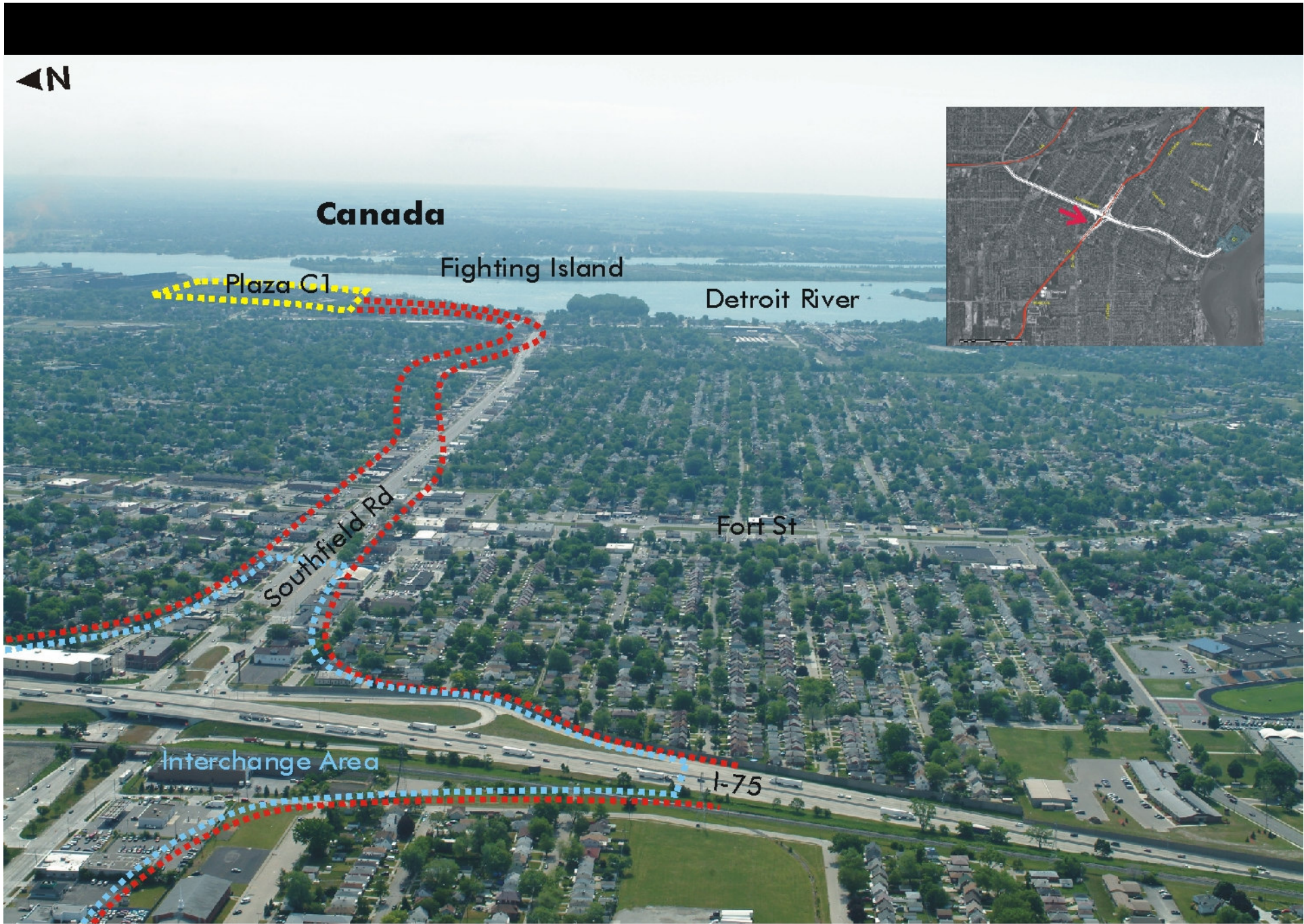
Detroit River

Southfield Rd

Fort St

Interchange Area

I-75





Canada

Fighting Island

Detroit River

Mud Island

Plaza  
C1

Grandport  
Elementary

Ecorse Creek

Southfield Rd









◀N

Canada

Fighting Island

Detroit River

U.S. Steel

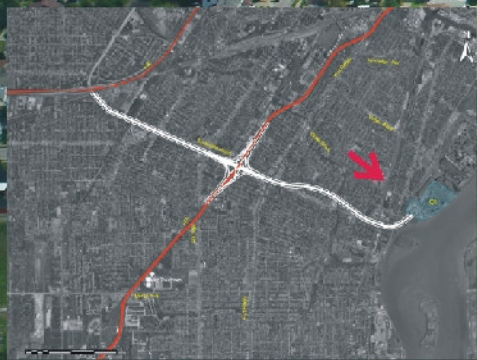
Plaza C1

Jefferson Ave

Outer Dr

Visger Rd

Railroad



1 Residential area



2 Residential area



3 Church on Jefferson Avenue



4 Industrial area



5 Industrial area



6 Mining site



7 Industrial site



8 Railroad tracks



9 Residential area



# US STEEL SOUTH C1- POTENTIAL PLAZA SITE

DETROIT RIVER INTERNATIONAL CROSSING

Location: East side of Jefferson Avenue, City of Ecorse

Plaza Size: Approximately 112 acres

The site is part of the existing and operating US Steel complex. Its west property line fronts on the Detroit River. The subject site is active in what appears to be a mineral extraction operation related to the production facility. Immediately to the west of the site is a series of active rail lines and to the south of the site is an area of primarily undeveloped land.



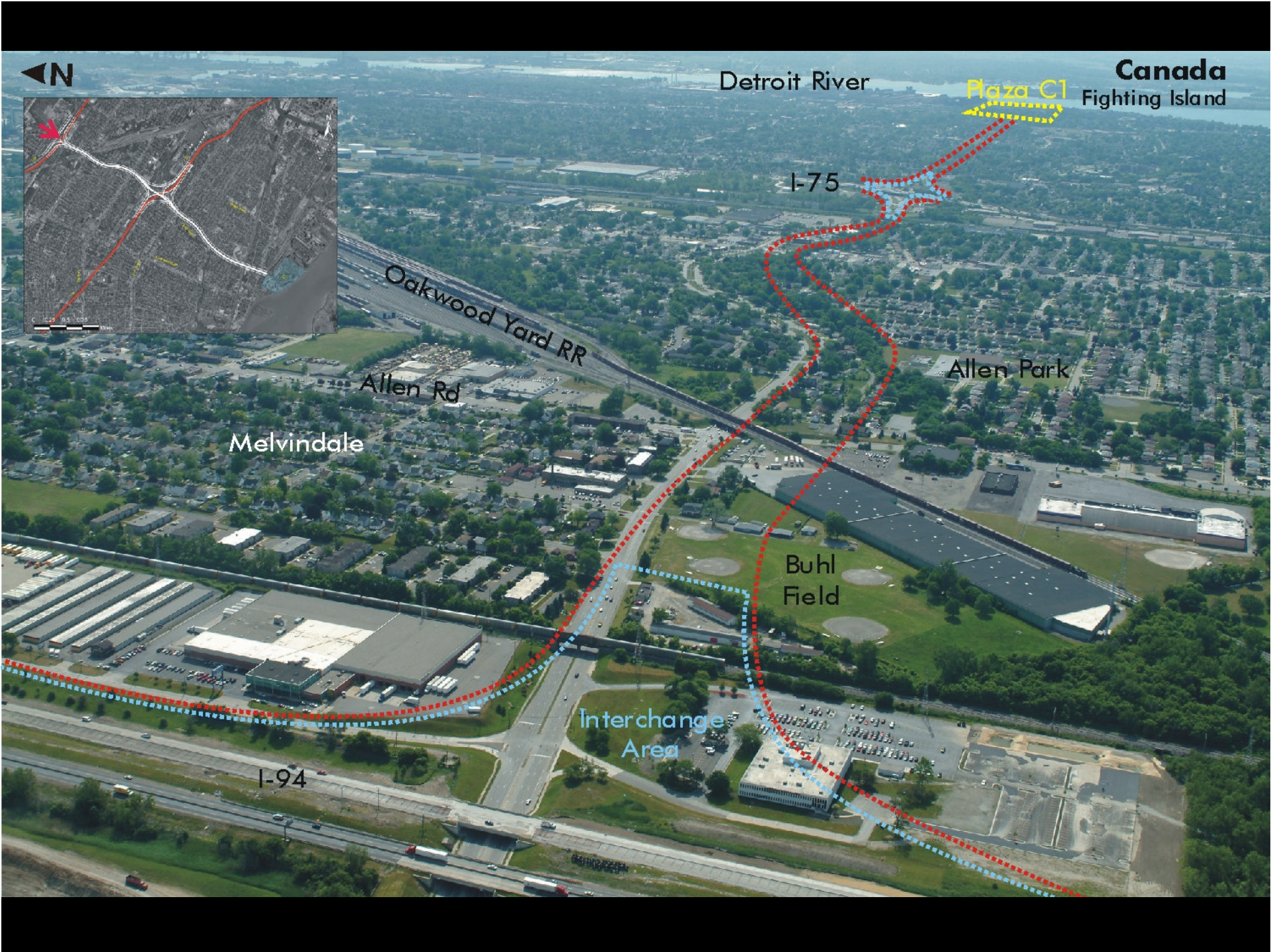
### LEGEND

B	Barb	P	Parks
FA	Federal	SEN	Senior Services
L	Laundromat	AA	Avoidance Area
M	Museum	CYH	City Hall
PW	Places of Worship	HMLS	Homeless Shelter
SHOP	Shopping	MED	Medical Facility
THP	Third Party Places	PS	Police Station
CEM	Cemetery	SC	School
FS	Fire Stations	OA	Opportunity Area
LB	Library		

**MDOT**  
Michigan Department of Transportation  
**THE CORRADINO GROUP**

**C1 Outer: I-94 to Plaza**





◀N

Detroit River

Canada  
Fighting Island

Plaza C1

I-75

Oakwood Yard RR

Allen Rd

Allen Park

Melvindale

Buhl Field

Interchange Area

I-94



Detroit River

U.S. Steel



I-75  
Interchange  
Area

Railroad

Dix Hwy

Oakwood Yard RR

Outer Dr





Oakwood  
Downriver  
Medical Center

Interchange  
Area

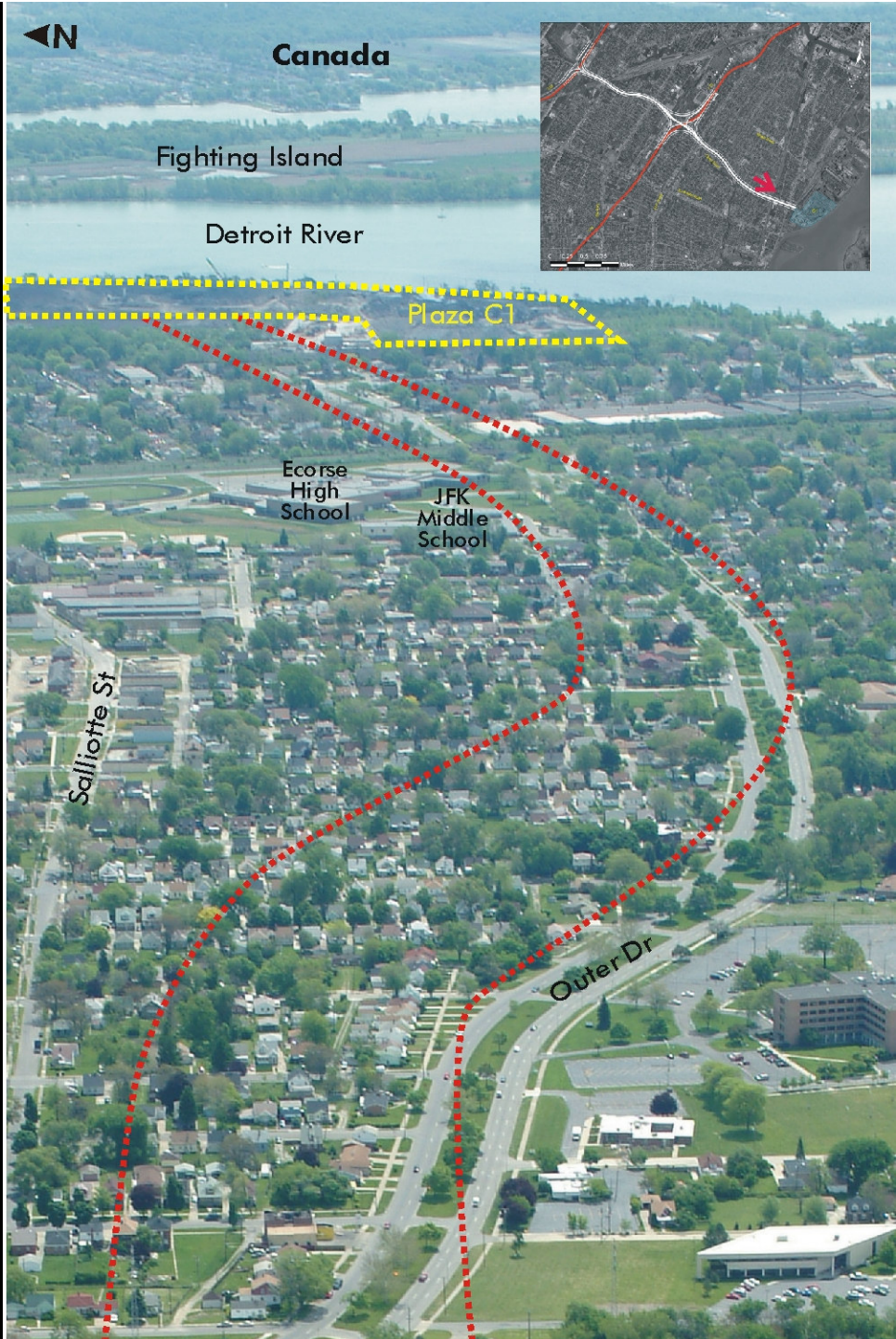
I-75

Railroad

Outer Dr

Dix Hwy









1 Residential area



2 Residential area



3 Church on Jefferson Avenue



4 Industrial area



5 Industrial area



# US STEEL SOUTH C1- POTENTIAL PLAZA SITE

DETROIT RIVER INTERNATIONAL CROSSING

Location: East side of Jefferson Avenue, City of Ecorse

Plaza Size: Approximately 112 acres

The site is part of the existing and operating US Steel complex. Its east property line fronts on the Detroit River. The subject site is active in what appears to be a mineral extraction operation related to the production facility. Immediately to the west of the site is a series of active rail lines and to the south of the site is an area of primarily undeveloped land.



### LEGEND

B	Barber	P	Park
FA	Federal	SEN	Senior Services
L	Laundromat	AA	Avoidance Area
M	Museum	CYH	City Hall
PW	Places of Worship	HMSL	Homeless Shelter
SHOP	Shopping	MED	Medical Facility
TPP	Third Party Places	PS	Police Station
CEM	Cemetery	SC	School
FS	Fire Stations	OA	Opportunity Area
LB	Library		

**MDOT**  
Michigan Department of Transportation  
**THE CORRADINO GROUP**

6 Mining site



7 Industrial site



8 Railroad tracks



9 Residential area



10 Residential area



**C2 Schaefer:  
I-94 South to Plaza**





Canada

Detroit River

Plaza C2

I-75

Marathon Oil

Marathon Oil

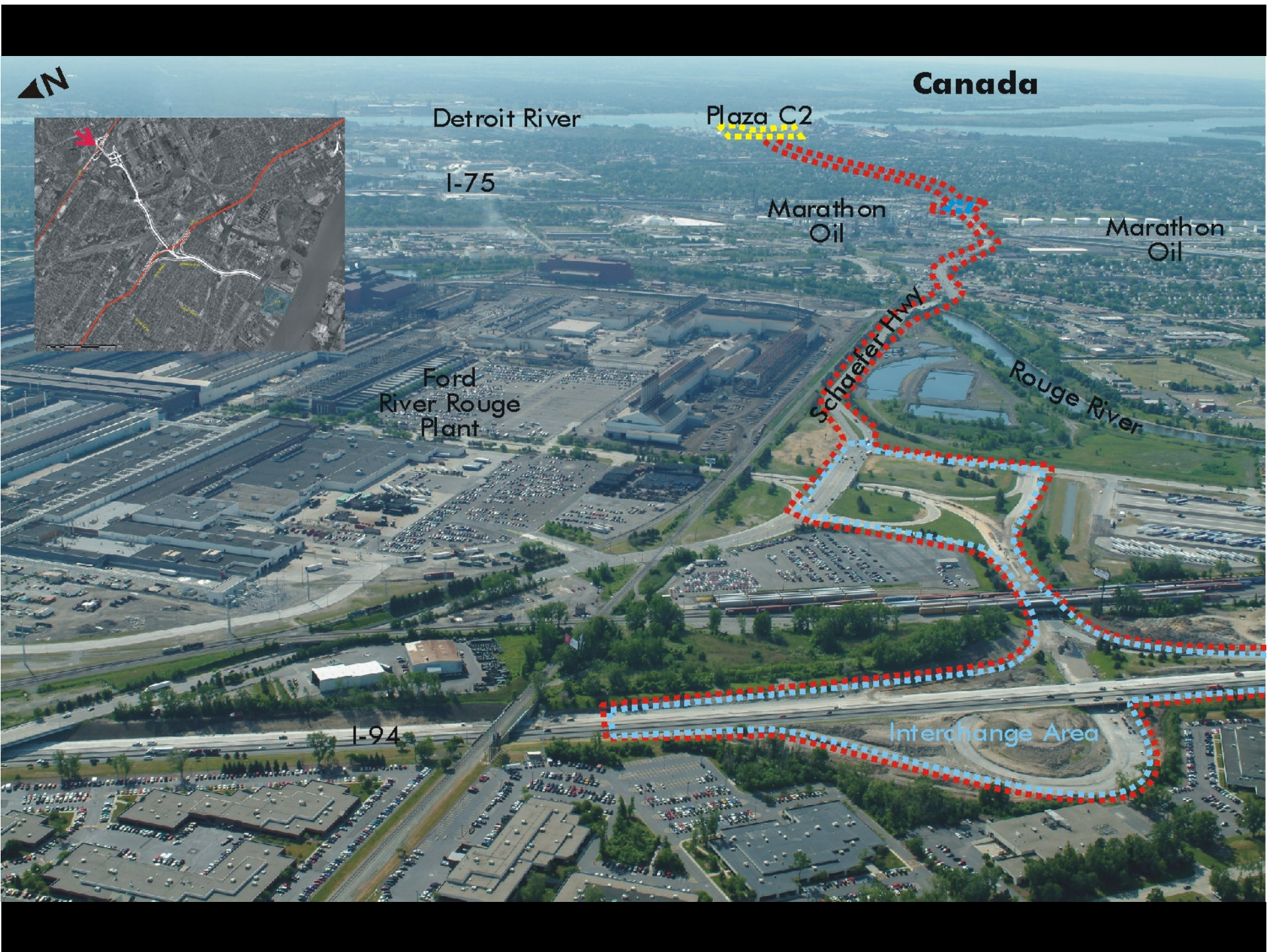
Ford River Rouge Plant

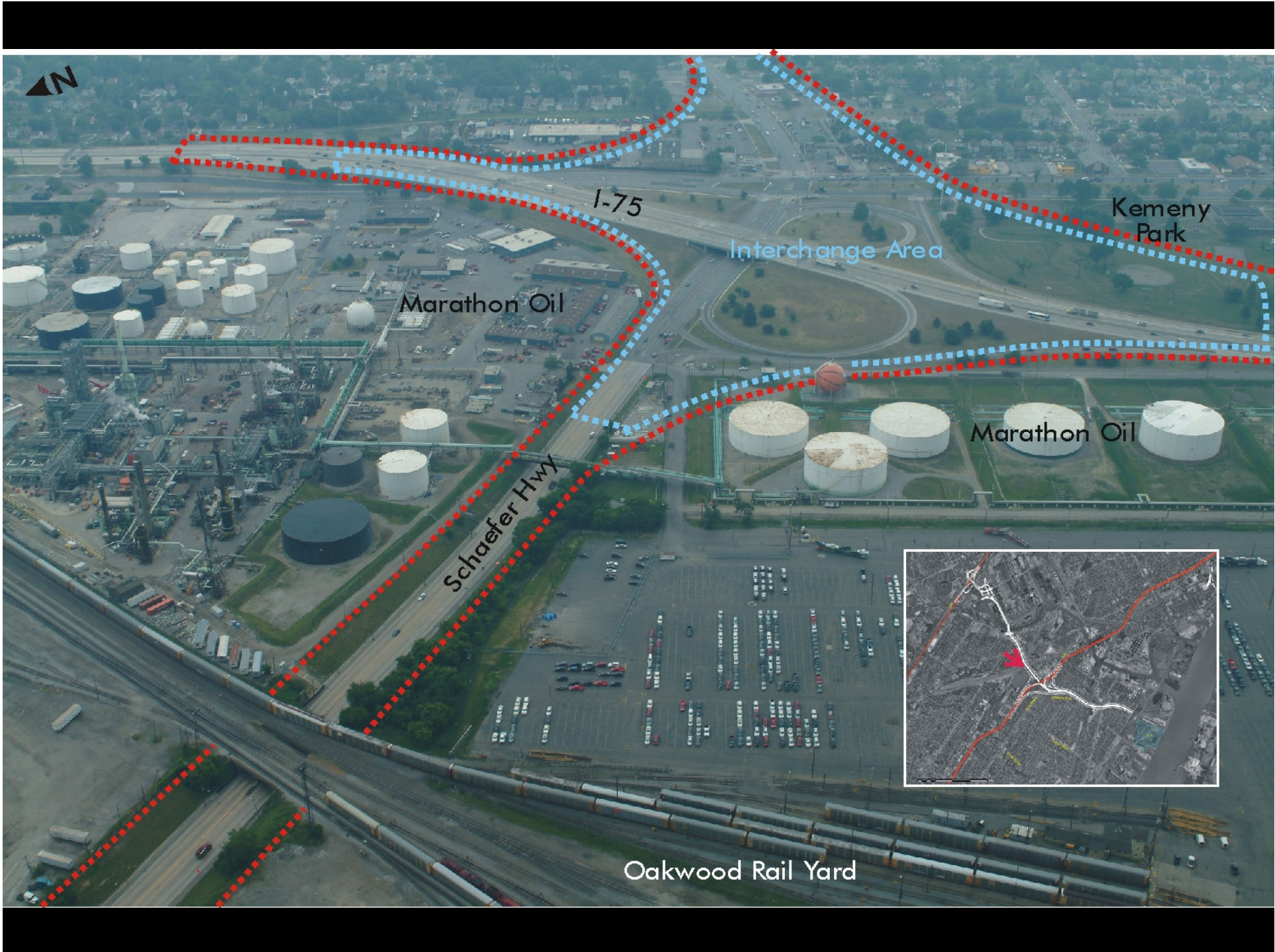
Schaefer Hwy

Rouge River

I-94

Interchange Area





I-75

Interchange Area

Kemeny Park

Marathon Oil

Schaefer Hwy

Marathon Oil

Oakwood Rail Yard





Canada

Detroit Edison

U.S. Steel

Plaza C2

Detroit River

U.S. Steel

River Rouge High School

Railroad

Schaefer Hwy

Interchange Area

I-75

Marathon Oil





Canada

Detroit River

Plaza C2

U.S. Steel

Marion Industrial Hwy

Coolidge





1 Railroad tracks



2 Land for sale



3 Vacant land for sale



4 Industrial site



5 Vacant industrial building



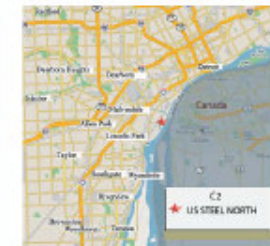
## US STEEL NORTH C2 - POTENTIAL PLAZA SITE

DETROIT RIVER INTERNATIONAL CROSSING

Location: East side of Market Avenue, City of Ecorse

Plaza Size: Approximately 110 acres

This site is part of the existing and operating US Steel complex and is immediately north of the plant complex. Its west property line fronts on the Detroit River. The site consists largely of vacant land and abandoned industrial buildings. However, a portion of the site that fronts on the river contains a marina and several boat slips. The west side of the site is bordered by rail and undeveloped land. To the north of the site is a park and a marina.



Potential Proposed Plaza Site

### LEGEND

B	Barb	P	Park
FA	Federal	SEN	Senior Services
L	Laundromat	AA	Avoidance Area
M	Museum	CVH	City Hall
PW	Places of Worship	HMS	Homeless Shelter
SHOP	Shopping	MED	Medical Facility
TPP	Third Party Places	PS	Police Station
CEM	Cemetery	SC	School
FS	Fire Station	OA	Opportunity Area
LB	Library		

**MDOT**  
Michigan Department of Transportation  
THE CORRADINO GROUP

6 Industrial site



7 Riverfront industrial site



8 Detroit Edison



9 Residential area



10 Industrial area



**C2 Schaefer:  
I-94 North to Plaza**





**Canada**

Detroit River

Plaza C2

I-75

Marathon Oil

Marathon Oil

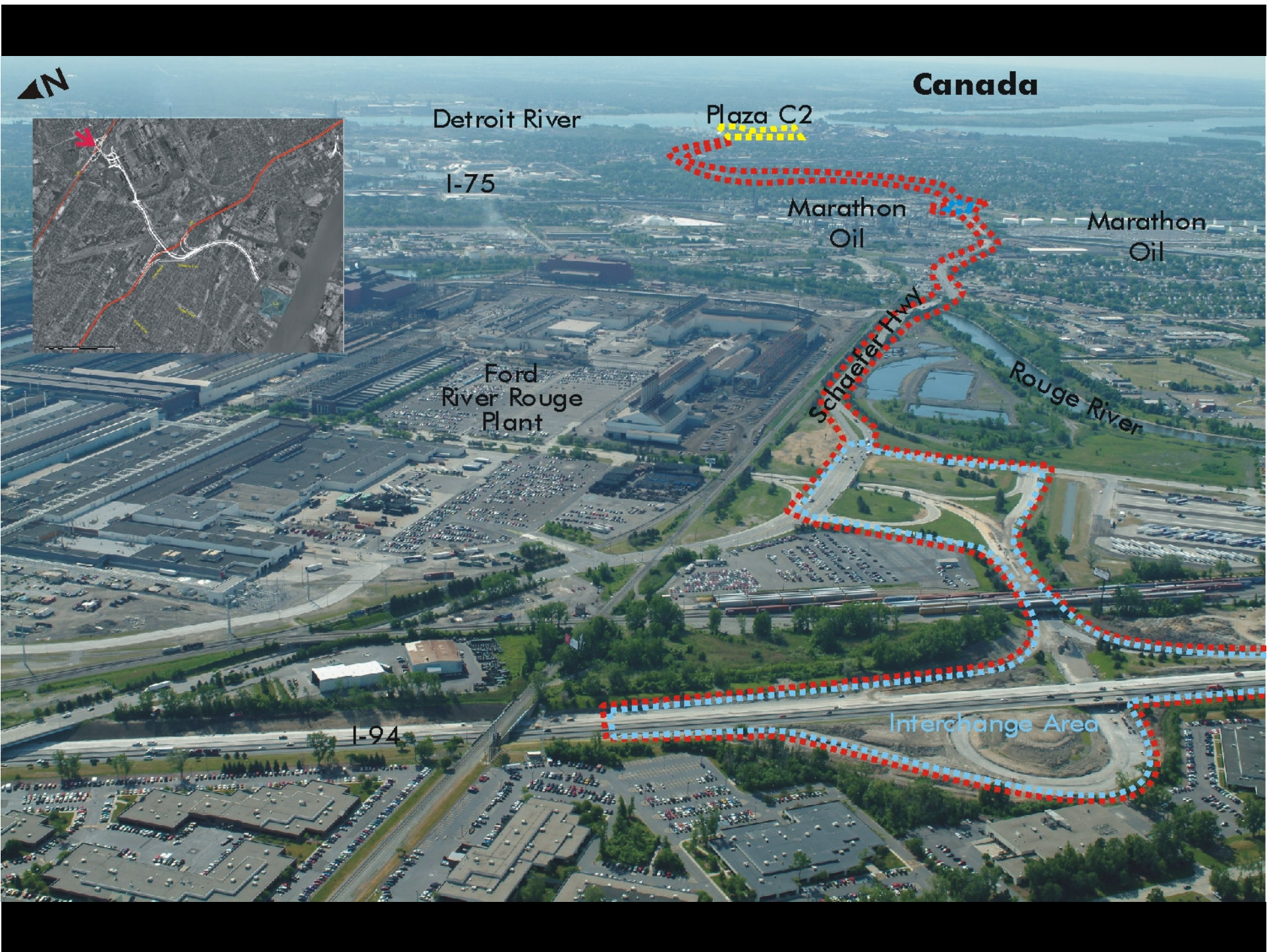
Ford River Rouge Plant

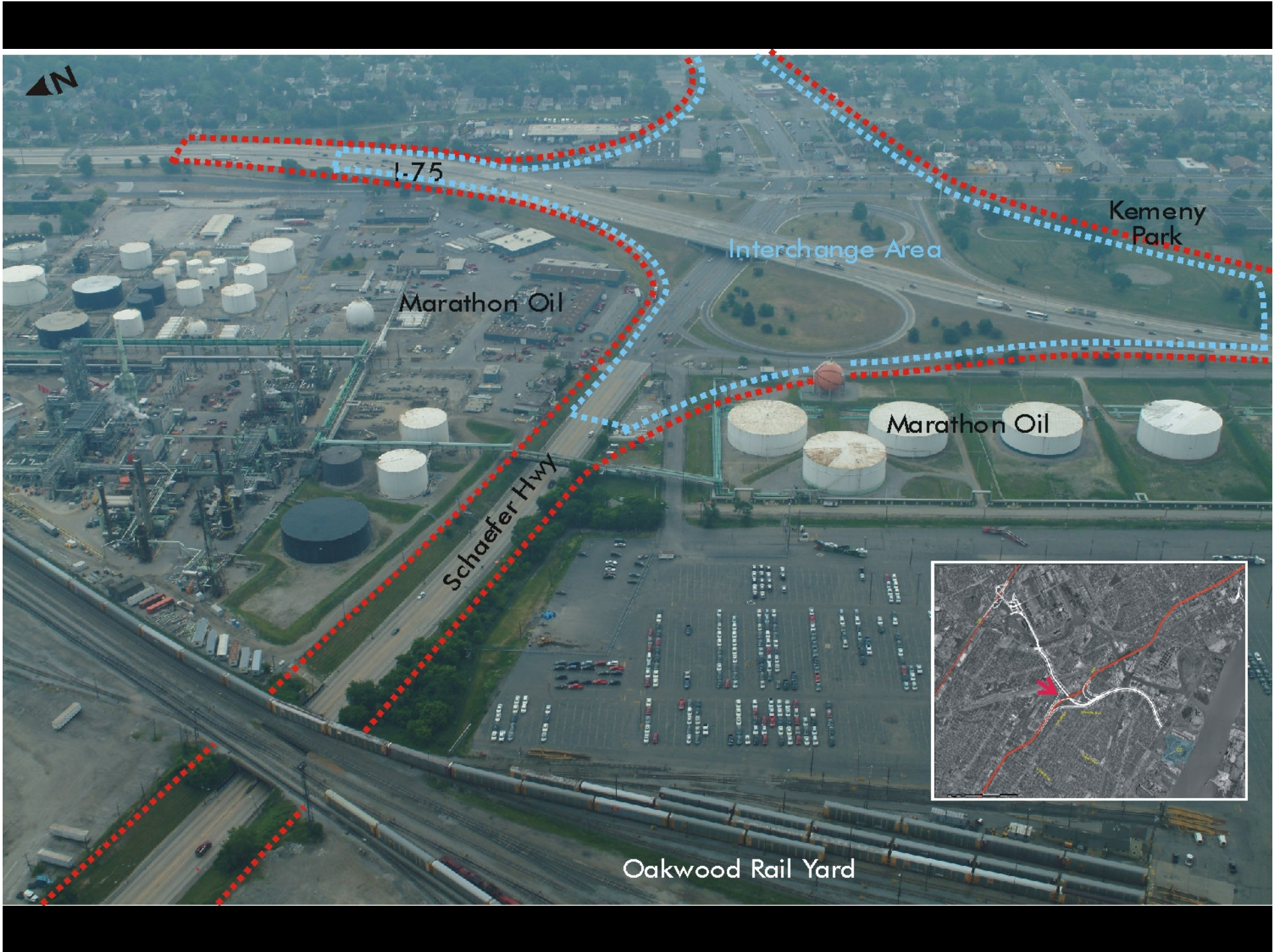
Schaefter Hwy

Rouge River

I-94

Interchange Area





L-75

Marathon Oil

Interchange Area

Kemeny Park

Schaefer Hwy

Marathon Oil

Oakwood Rail Yard





Canada

Detroit Edison

U.S. Steel

Plaza C2

Detroit River

U.S. Steel

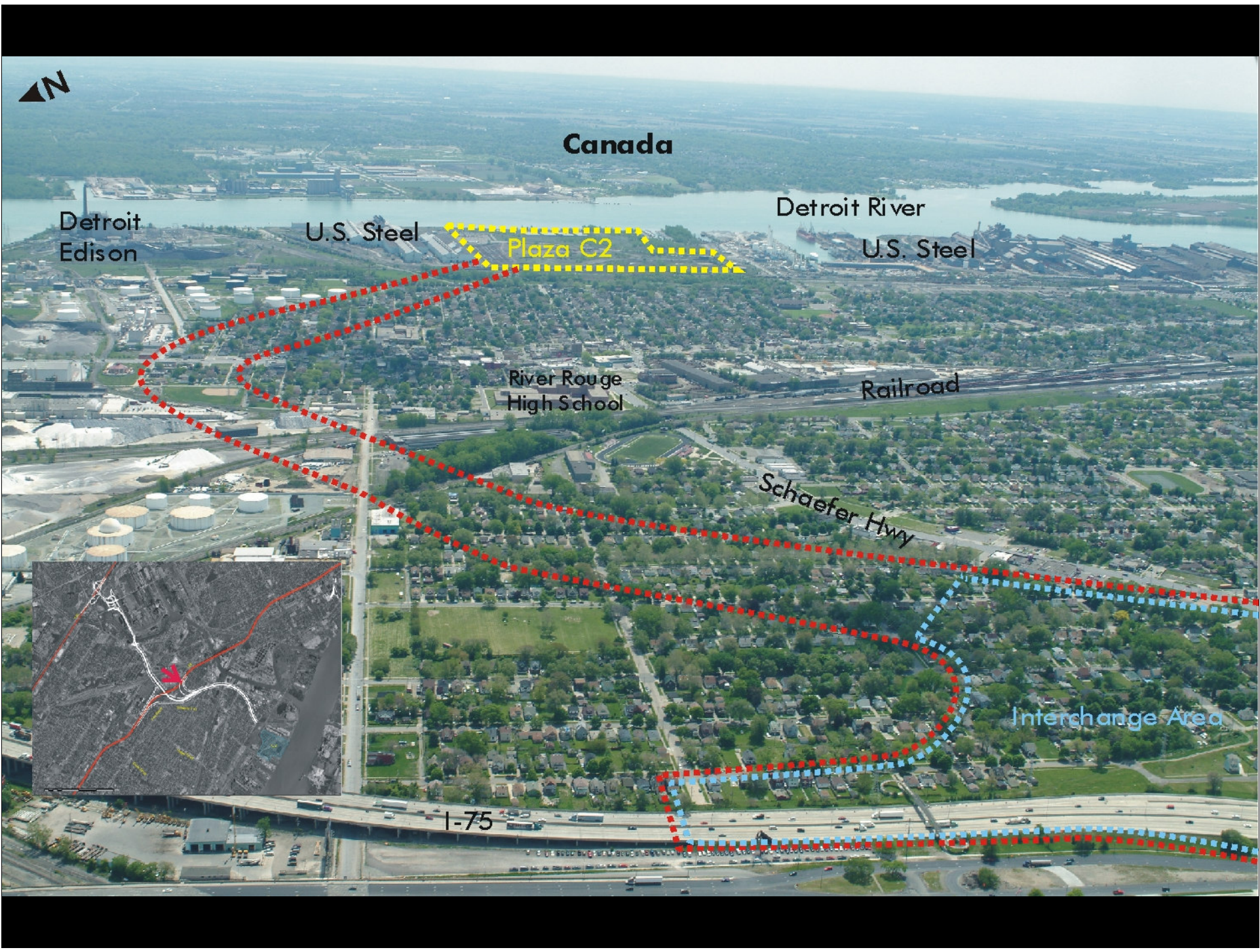
River Rouge High School

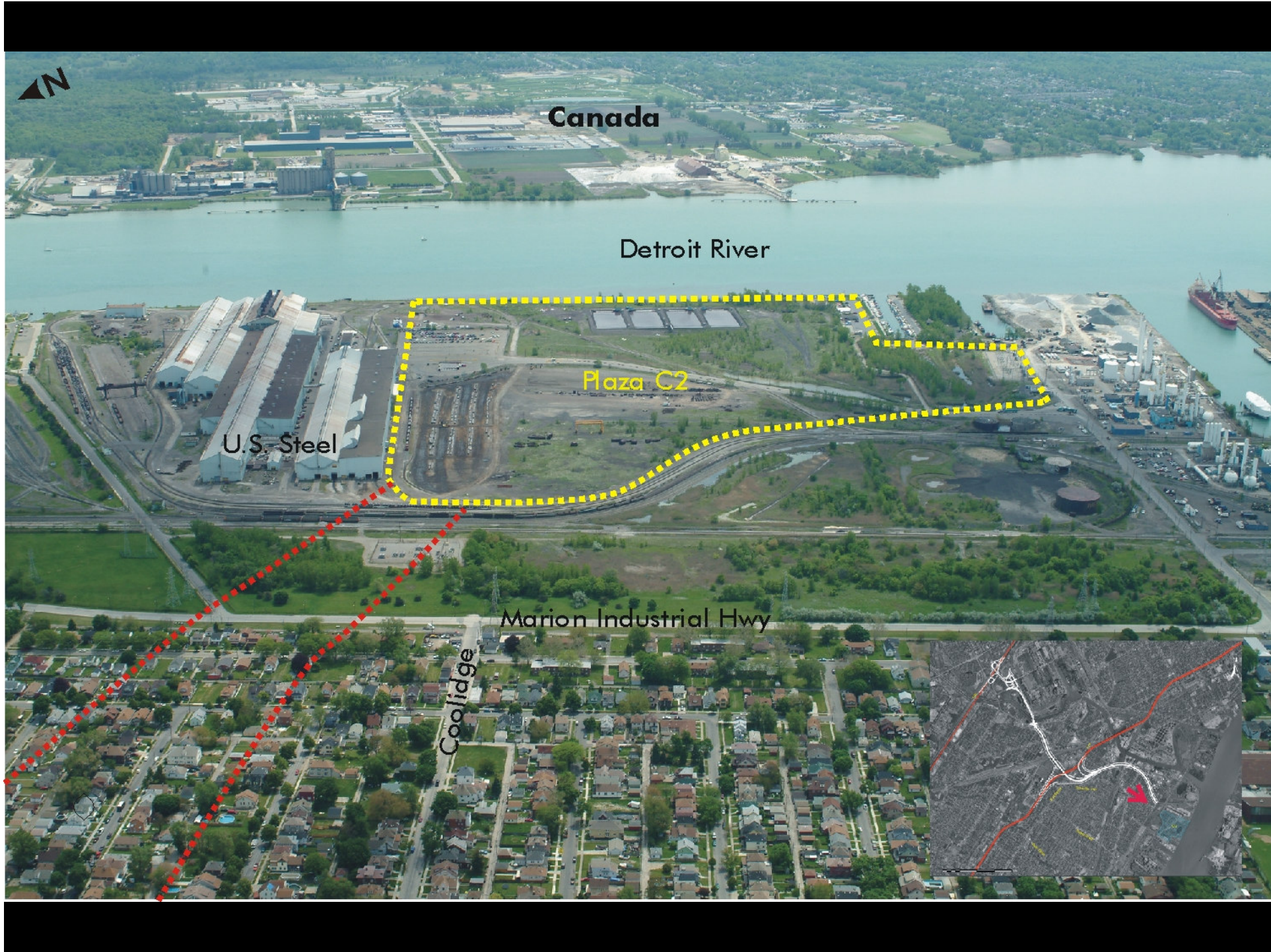
Railroad

Schaefer Hwy

Interchange Area

I-75





Canada

Detroit River

Plaza C2

U.S. Steel

Marion Industrial Hwy

Coolidge



1 Railroad tracks



2 Land for sale



3 Vacant land for sale



4 Industrial site



5 Vacant industrial building



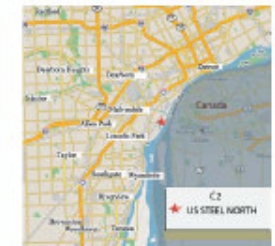
## US STEEL NORTH C2 - POTENTIAL PLAZA SITE

DETROIT RIVER INTERNATIONAL CROSSING

Location: East side of Market Avenue, City of Ecorse

Plaza Size: Approximately 110 acres

This site is part of the existing and operating US Steel complex and is immediately north of the plant complex. Its west property line fronts on the Detroit River. The site consists largely of vacant land and abandoned industrial buildings. However, a portion of the site that fronts on the river contains a marina and several boat slips. The west side of the site is bordered by rail and undeveloped land. To the north of the site is a park and a marina.



Potential Proposed Plaza Site

### LEGEND

B	Barb	P	Park
FA	Federal	SEN	Senior Services
L	Laundromat	AA	Avoidance Area
M	Museum	CVH	City Hall
PW	Places of Worship	HMS	Homeless Shelter
SHOP	Shopping	MED	Medical Facility
TPP	Third Party Places	PS	Police Station
CEM	Cemetery	SC	School
FS	Fire Station	OA	Opportunity Area
LS	Library		

**MDOT**  
Michigan Department of Transportation  
THE CORRADINO GROUP

6 Industrial site



7 Riverfront industrial site



8 Detroit Edison



9 Residential area



10 Industrial area





**C3 Delray West**







Canada

Detroit River



Yellow  
Trucking

Zug Island

West End St

Jefferson Ave

Holy Cross  
Church

St John Cantius  
Catholic Church

Detroit Wastewater  
Treatment Plant

Plaza C3

Railroad

Interchange  
Area

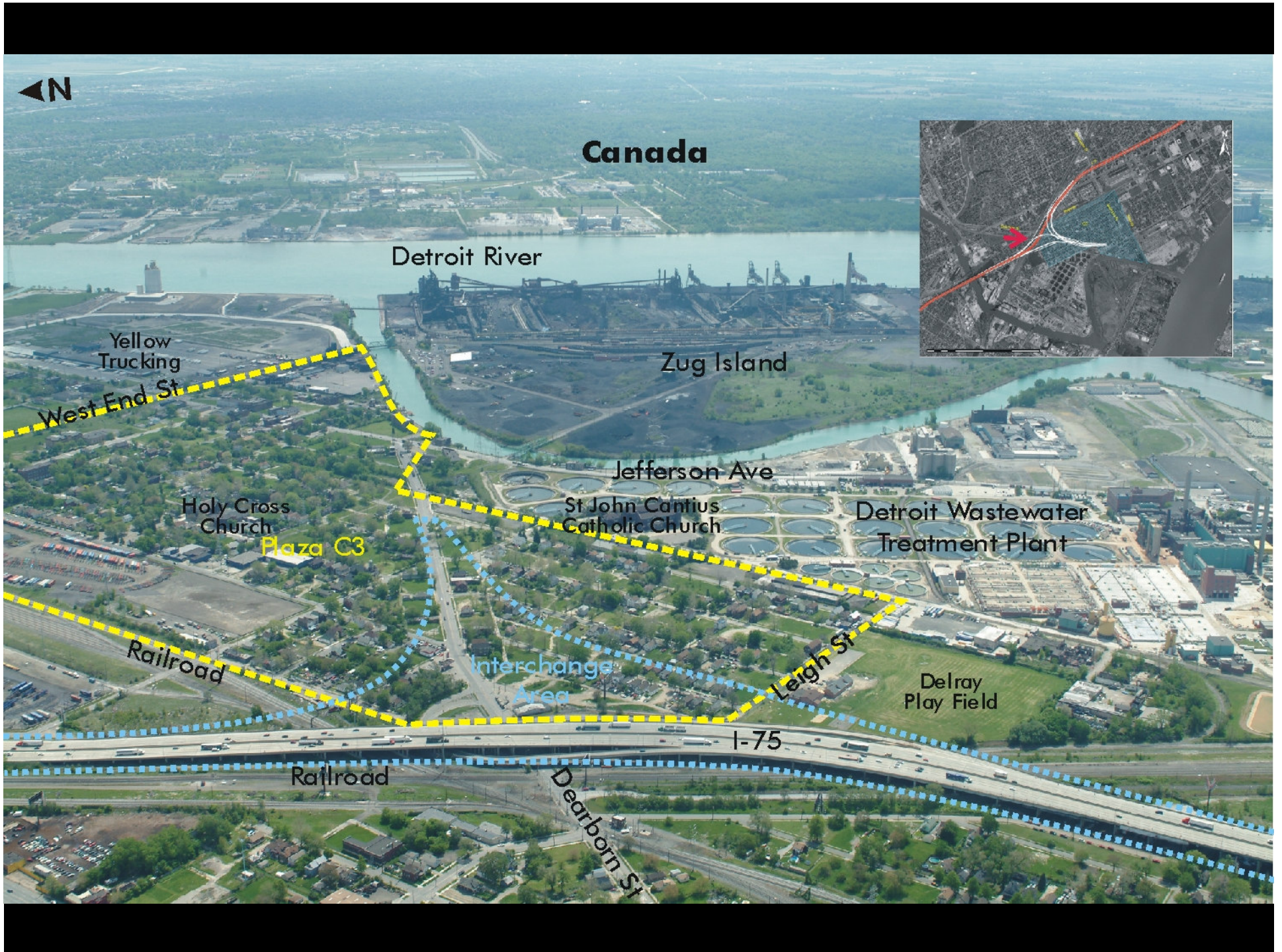
Leigh St

Delray  
Play Field

I-75

Railroad

Dearborn St



# DELRAY WEST C3 - POTENTIAL PLAZA SITE

DETROIT RIVER INTERNATIONAL CROSSING

Location: South of Rail Way Road, West of Dearborn Street, City of Detroit

Plaza Size: Approximately 209.31 acres

This area contains primarily single family detached houses on small residential lots. There are vacant residential lots interspersed between the houses. The area also is comprised of mixed uses consisting of small neighborhood commercial businesses. There are also several places of worship in the area. There is an active rail line that forms the northern edge of the potential site.



Potential Proposed Plaza Site

### LEGEND

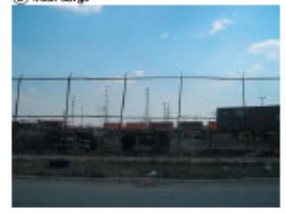
B	Barber	P	Park
FA	Federal	SEN	Senior Services
L	Laundromat	AA	Avoidance Area
M	Museum	CVH	City Hall
PW	Places of Worship	HMS	Homeless Shelter
SHOP	Shopping	MED	Medical Facility
TPP	Third Party Places	PS	Police Station
CEM	Cemetery	SC	School
FS	Fire Station	OA	Opportunity Area
LB	Library		



1 West End Street



2 Truck cargo



3 Open field



4 Vacant land



5 Residential area



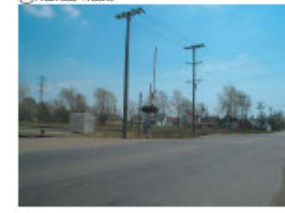
6 Copland Street



7 Delray Recreational Center



8 Railroad Tracks



9 I-75 Bridge



10 Thaddeus Street



**MDOT**  
Michigan Department of Transportation  
**THE CORRADINO GROUP**

**C4 Delray East**





Detroit River

Ft. Wayne



Jefferson Ave  
Reeder St

Railroad  
Plaza C4

Junction St

Campbell St

Calvary St

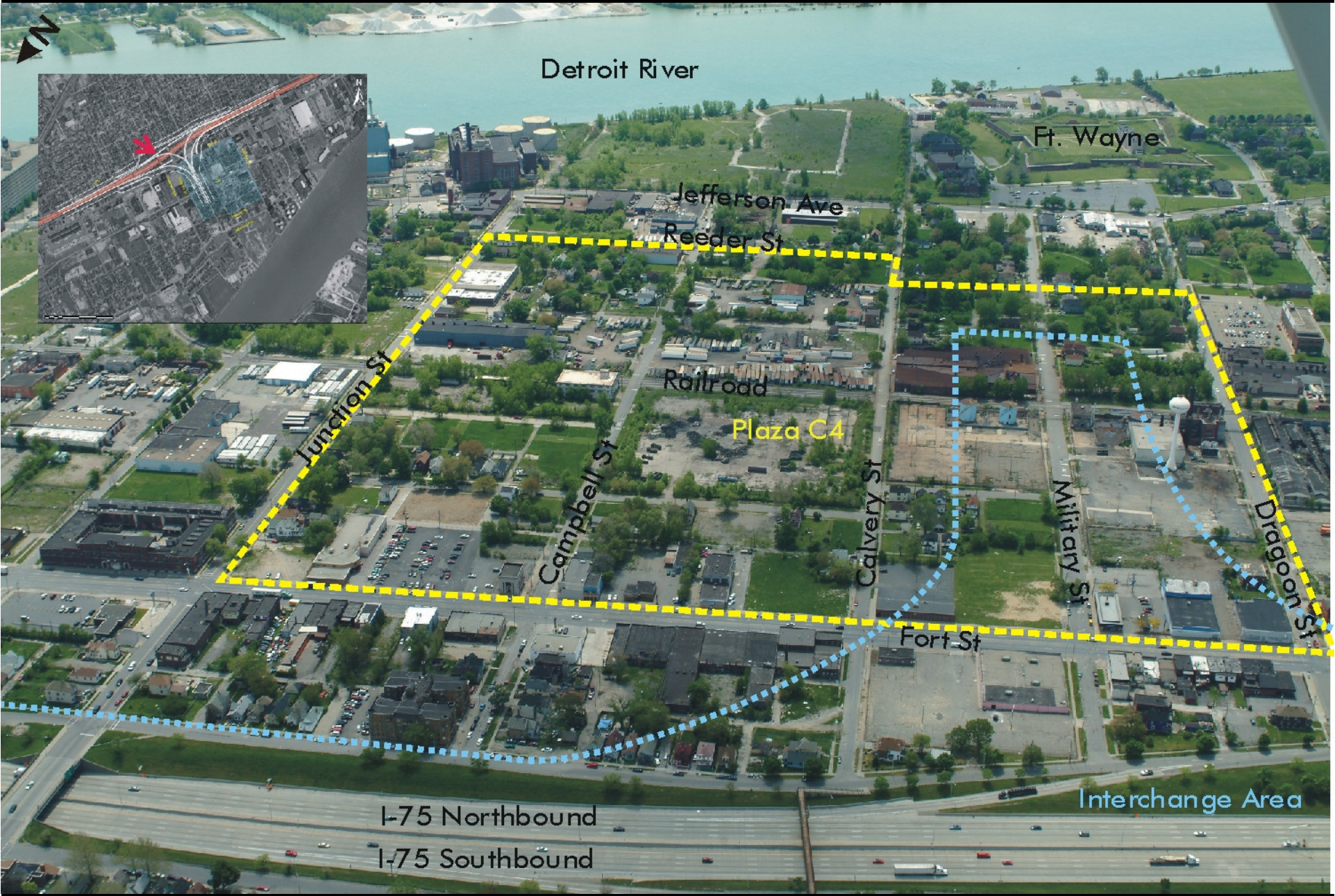
Military St

Dragon St

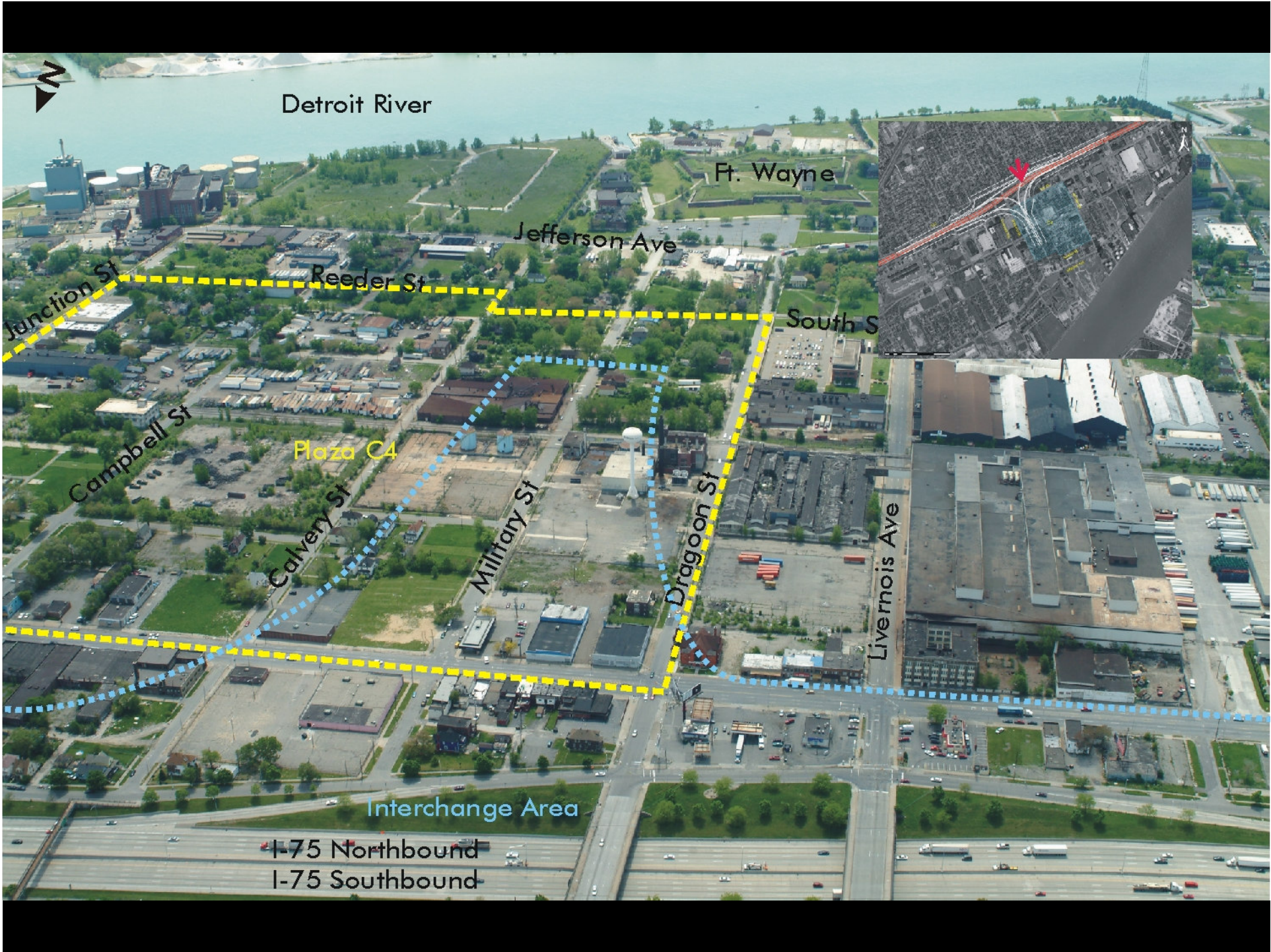
Fort St

I-75 Northbound  
I-75 Southbound

Interchange Area







Detroit River

Ft. Wayne

Jefferson Ave

Junction St

Reeder St

South S

Campbell St

Plaza C4

Calvary St

Military St

Dragon St

Livernois Ave

Interchange Area

I-75 Northbound

I-75 Southbound

# DELRAY EAST C4 - POTENTIAL PLAZA SITE

DETROIT RIVER INTERNATIONAL CROSSING

Location: South of Rail Way Road, West of Junction Street, East of Livernois Avenue, North of West Jefferson Avenue, City of Detroit

Plaza Size: Approximately 83.78 acres

This area contains a limited number of single family detached houses on small residential lots. The site contains several abandoned buildings and outdoor storage areas. There are several small vacant residential lots scattered throughout this area. Outdoor storage areas with vacant buildings and land border the site on the northeast side. An active rail line forms the northern boundary of the potential plaza site.



### LEGEND

B	Barber	P	Park
FA	Federal	SEN	Senior Services
L	Laundromat	AA	Avoidance Area
M	Museum	CVH	City Hall
PW	Places of Worship	HMS	Homeless Shelter
SHOP	Shopping	MED	Medical Facility
TPP	Third Party Places	PS	Police Station
CEM	Cemetery	SC	School
FS	Fire Stations	OA	Opportunity Area
LB	Library		

**MDOT**  
Michigan Department of Transportation  
**THE CORRADINO GROUP**

